

# Bug Hunt™

## Squawkbox Cards™

Electronic card games with something to say!

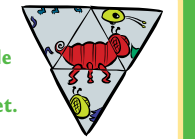
### Object of the Game

Be the first to build four jitterbugs!

### Get to Know the Jitterbugs



A jitterbug is made up of a head, a body, a tail, and feet.

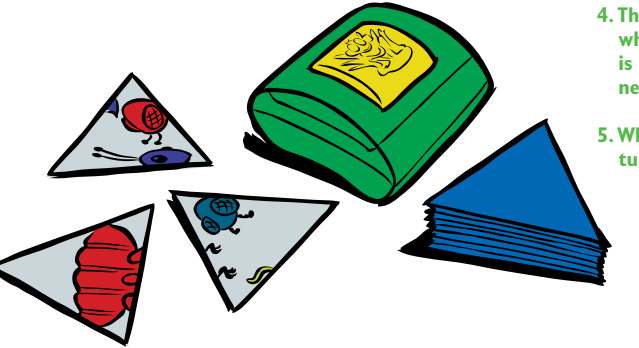


All four pieces of a complete bug must be the same color, and the **number of legs** on the body has to match the **number of feet**.

Welcome to Cranium Bug Hunt, where you buzz in to build a bug before time flies away!

### Get Ready

1. Place the Squawkbox where everyone can reach it.
2. Shuffle the jitterbug cards and put them in a pile face down next to the box.
3. Flip over three cards and place them face up next to the box. All players share the cards on the table.



4. The player whose birthday is coming up next goes first.
5. When you're ready, turn on the box.

### On Your Turn

1. When the Bug Hunter says "flip," flip over the top card of the draw pile and place it where all players can see it.
2. Before the Bug Hunt tune ends and your turn is over, decide if you can build a bug out of the face-up cards.

### 3. Can you build a jitterbug?

#### Yes!

Press the button.

You now have 10 seconds to build your bug.

**If you build a bug before time runs out,** press the button again and collect the bug.

**If you cannot build a bug before time runs out,** put the cards back and try again next time.

Now it's the next player's turn.

#### Not this time

Don't press the button.

The game will continue, and the Bug Hunter will ask the next player to flip a card.

### Note

- You can press the button to build a bug only on your turn.
- Only the player trying to build a bug can move the cards around.
- Bugs cannot be built from already-completed bugs.

### How to Win

When you've built four jitterbugs, you're the winner! Hold down the button to celebrate!



## TROUBLESHOOTING

Are you having trouble with your Squawkbox?  
Try these tips!

**If your Squawkbox...**

**Try this!**

**Isn't loud enough...**

**Adjust the volume with the switch on the bottom of the Squawkbox.**

**Sounds garbled...**

**Install three new AAA batteries.**

**Won't turn on...**

**Install three new AAA batteries.**

**Stops in the middle of a game...**

**Turn your Squawkbox off and then on again.**

**Install three new AAA batteries.**

If you've tried all these steps and you're still having trouble, go to [cranium.com/support](http://cranium.com/support) or call 1-877-CRANIUM. We value your input, and we'll do our best to help!

**WARNING:** Changes or modifications to this unit not expressly approved by the party responsible for compliance could void the user's authority to operate the equipment.

**NOTE:** This equipment has been tested and found to comply with the limits for a Class B digital device, pursuant to Part 15 of the FCC rules and EMC regulations. Conforms to the requirements of EN 50088. These limits are designed to provide reasonable protection against harmful interference in a residential installation. This equipment generates, uses, and can radiate radio frequency energy and, if not installed and used in accordance with the instructions, may cause harmful interference to radio communications. However, there is no guarantee that interference will not occur in a particular installation. If this equipment does cause harmful interference to radio or television reception, which can be determined by turning the equipment off and on, the user is encouraged to try to correct the interference by one or more of the following measures:

- Reorient or relocate the receiving antenna.
- Increase the separation between the equipment and receiver.
- Consult the dealer or an experienced radio/TV technician for help.

### CHANGING THE BATTERIES

Your Squawkbox needs three AAA batteries. Follow these steps to install the batteries. Batteries must be installed and removed by an adult.

1. Turn over your Squawkbox and unscrew the battery cover.
2. Insert the batteries as indicated.
3. Replace the battery cover and tighten the screw.

### BATTERY SAFETY

- Do not put the batteries in backwards. Positive (+) and negative (-) ends must be inserted in the correct directions following the polarity (+/-) diagram in the battery compartment.
- Do not mix alkaline, standard (carbon-zinc), or rechargeable (nickel-cadmium) batteries.
- Only batteries of the same or equivalent type as recommended are to be used.
- Do not mix old and new batteries.
- Rechargeable batteries must be removed before recharging.
- Rechargeable batteries must be recharged by an adult only.
- Batteries must be installed and removed by an adult only.
- Remove exhausted batteries and dispose of them properly.
- Do not try to recharge non-rechargeable batteries.
- The supply terminals are not to be short-circuited.



© 2007 CRANIUM, INC. ALL RIGHTS RESERVED. THE FOLLOWING ARE TRADEMARKS OR REGISTERED TRADEMARKS OF CRANIUM, INC. IN THE U.S. AND/OR OTHER JURISDICTIONS: BUG HUNT, CRANIUM, SQUAWKBOX CARDS, THE CRANIUM LOGO, AND THE BRAIN LOGO. WE PACK EVERY CRANIUM GAME WITH A VARIETY OF OUTRAGEOUS ACTIVITIES. IT'S UP TO YOU TO USE CAUTION, PLAY IT SMART, AND HAVE FUN.

Take the fun with you!  
**Squawkbox Cards™**



the strategy game of twisting tides and hidden treasure



the crazy cafeteria game where you make the meals



The race is on to create your ultimate zoo! It takes a bunch of resources (and a little bit of luck) to build four unique animal habitats and celebrate Opening Day.

Ages 8 to Adult

Express yourself with  
**Cranium character games!**

You and your friends share fun creations and score points for the most original writing, drawing, singing, and more! Try new Doodle Tales™, Super Showdown™, Tune Twister™, and Wacky Words™.

Ages 8 to Adult



For everything Cranium, visit [cranium.com](http://cranium.com)