



Welcome to Cranium® Giggle Gear™

Fancy Fairy

GET STARTED

1. To turn on the fairy wings, open the pouch on the back of the wings.
2. Remove the battery case. Move the switch on the case to **HI (II)** or **LO (I)** to adjust the volume. Put the case back into the pouch, arrow-side up, and close the pouch.
3. Put on your wings and dance, spin, or skip to hear flutter noises!
4. To turn on the fairy wand, press the button on the handle. Press it quickly to hear a short twinkle, or hold it down for a longer fairy sound.
5. Put on the rest of your fairy costume. For more fun, wear your anklets as bracelets! Now go and make someone giggle. Have fun!

When you've finished, take off the fairy wings. Turn the switch on the battery case to **OFF (O)**. If you forget, the batteries will turn themselves off after a few minutes.

TROUBLESHOOTING

Are you having trouble with your Fancy Fairy?

- If your fairy wings won't make sounds, make sure the switch is in the **LO (I)** or **HI (II)** position or try installing new LR44 button batteries.
- If your wand won't make sounds, try installing new LR44 button batteries.
- To save battery power, make sure you turn off the wings when you've finished playing with them.

If you've tried these steps and are still having trouble...

- In the U.S., go to cranium.com/support or call **1-877-CRANIUM**
- Outside the U.S., go to cranium.com/worldwidesupport

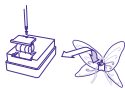
We value your input and we'll do our best to help!

CHANGING THE BATTERIES

Need to change the batteries? Ask an adult to get new LR44 button batteries and follow these instructions. (LR44 batteries can usually be found in the photo and electronics sections of major retailers, pharmacies, and grocery stores.)

To replace fairy wings batteries:

Remove the battery case from the fabric pouch (do not disconnect wires). Using a screwdriver, remove the battery door. Insert new batteries. Replace the door and tighten the screw. Put the case back in the pouch, arrow-side up.



To replace fairy wand batteries:

Using a screwdriver, open the battery cover on the wand handle. Insert new batteries. Replace the cover and tighten the screw.



BATTERY SAFETY

- Do not put the batteries in backwards. Positive (+) and negative (-) ends must be inserted in the correct directions following the polarity (+/-) diagram in the battery compartment.
- Do not mix alkaline, standard (carbon-zinc), or rechargeable (nickel-cadmium) batteries.
- Only batteries of the same or equivalent type as recommended are to be used.
- Do not mix old and new batteries.
- Rechargeable batteries must be removed before recharging.
- Rechargeable batteries must be recharged by an adult only.
- Batteries must be installed and removed by an adult only.
- Remove exhausted batteries and dispose of them properly.
- Do not try to recharge non-rechargeable batteries.
- The supply terminals are not to be short-circuited.

NOTE: This equipment has been tested and found to comply with the limits for a Class B digital device, pursuant to Part 15 of the FCC rules and EMC regulations. Conforms to the requirements of EN 50088 and ICES-003/NMB-003. These limits are designed to provide reasonable protection against harmful interference in a residential installation. This equipment generates, uses, and can radiate radio frequency energy and, if not installed and used in accordance with the instructions, may cause harmful interference to radio communications. However, there is no guarantee that interference will not occur in a particular installation. If this equipment does cause harmful interference to radio or television reception, which can be determined by turning the equipment off and on, the user is encouraged to try to correct the interference by one or more of the following measures:

- Reorient or relocate the receiving antenna.
- Increase the separation between the equipment and receiver.
- Consult the dealer or an experienced radio/TV technician for help.



WARNING: CHOKING HAZARD—

Small parts. Not for children under 3 years.



WARNING: TO AVOID BATTERY LEAKAGE

Please follow these battery usage instructions. Failure to follow these instructions can result in battery acid leakage that may cause burns, personal injury, and property damage.

© 2006 CRANIUM, INC. ALL RIGHTS RESERVED. CRANIUM CHARACTER ILLUSTRATIONS © 1998, 2001 BASEMAN™. THE FOLLOWING ARE TRADEMARKS OR REGISTERED TRADEMARKS OF CRANIUM, INC. IN THE U.S. AND/OR OTHER JURISDICTIONS: CRANIUM, CREATIVE CAT, DATA HEAD, EVERYONE SHINES, GIGGLE GEAR, STAR PERFORMER, WORD WORM, THE CRANIUM LOGO, AND THE BRAIN LOGO. WE PACK EVERY CRANIUM TOY WITH A VARIETY OF OUTRAGEOUS ACTIVITIES. IT'S UP TO YOU TO USE CAUTION, PLAY IT SMART, AND HAVE FUN.

For even more fun, visit cranium.com!