

BABY Color & Shampoo™ DOLL

For Best Results Follow Instructions Carefully

Parents, please go through the instructions with your child when playing with the doll for the first time.

The colors in the coloring comb are non-toxic, washable water colors that are designed to be used on your doll's hair only. Should the watercolors come in contact with your child's hair, they will wash out with regular shampoo.

The colors in the coloring comb are formulated to wash from most surfaces, including hair, skin and most fabrics. Staining is possible on silk and some synthetic fabrics. Following the manufacturer's washing instructions should remove stains from cotton, polyester and other fabric blends. Repeat the washing process if necessary.

Our colors may not wash from matte surfaces, unfinished wood, or unglazed ceramic surfaces, but can be surface washed from carpeting or upholstered fabrics with cool water and a mild soap or detergent.

NOTE: If the watercolors come in contact with the doll's skin, wash them off as soon as possible. Do not let the color dry on the doll's skin or staining may occur.

The shampoo included with your doll is non-toxic. Any regular shampoo can be used with the doll.

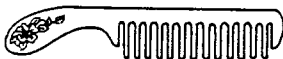
ACCESSORIES



Water Bottle
Unscrew top, fill with cold tap water, replace top.



Coloring Comb



Styling Comb



Shampoo

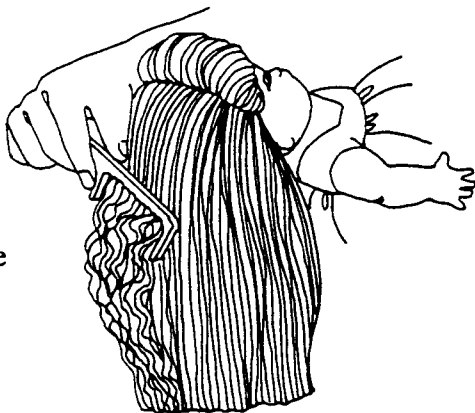


Ponytail Holder

To Color the Hair of BABY COLOR & SHAMPOO™ Doll

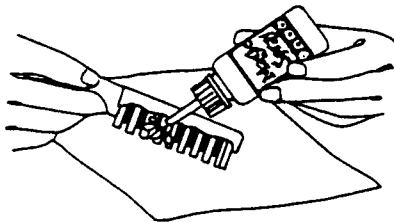
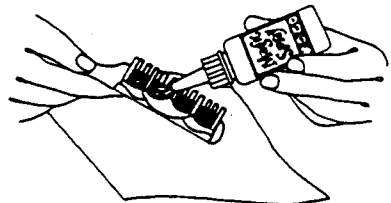
1

First comb all angles out of your doll's hair with the styling comb. The smoother the hair, the easier it will be to apply color.



2

Lay down a paper towel. Thoroughly wet the color tablets in the coloring comb with water from the water bottle. Turn the comb over and thoroughly wet the other side of the color tablets so that both sides of the coloring comb are wet.



3

Hold a thin layer of untangled hair with one hand. With the color tablets lying flat against the hair (as shown), run the moistened coloring comb through the hair.



You should see vivid streaks of color after the first few strokes (colors may blend for a rainbow effect). You can also apply one color at a time by running one small section of hair through a single color on the comb. Use this method to apply all 4 colors for the effect shown on the package. Continue to comb until you have the amount of color you want. You may need to re-wet the comb if the color tablets start to dry.

4

When you are finished coloring, put the coloring comb on a paper towel to dry. To avoid color transfer to other surfaces, let colored hair dry before styling. Avoid letting wet, colored hair contact the doll's skin.

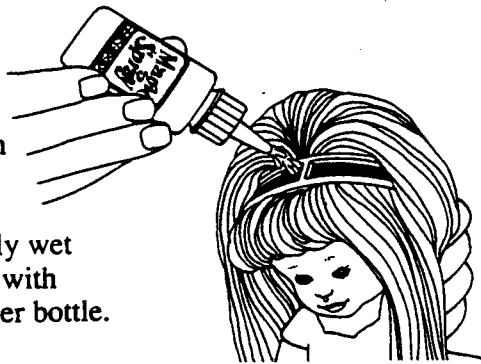
5

After letting the color dry, gently comb through the hair with the styling comb, and style as desired. Your baby's hair color will soften to pretty pastel streaks.

To Make Bubbles and Shampoo the Hair of BABY COLOR & SHAMPOO™ Doll

1

Move front section of hair to expose headband on doll's head and thoroughly wet the sponge section with water from the water bottle.



2

Apply a thin line of shampoo to the entire length of the headband.



3

Add more water from the water bottle, gently rubbing the sponge with the tip of the bottle to create a small lather on the headband.



4

Give the baby's stomach a few squeezes until bubbles begin to appear. If bubbles do not form, repeat steps 1, 2, and 3.



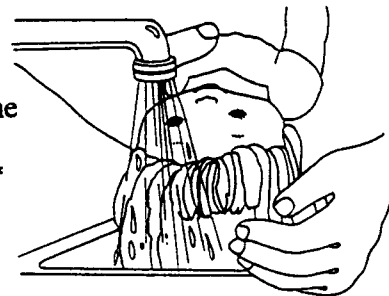
5

To create a full lather in the doll's hair, thoroughly wet the hair and add more shampoo.



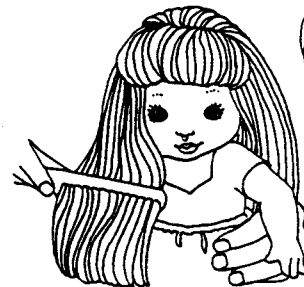
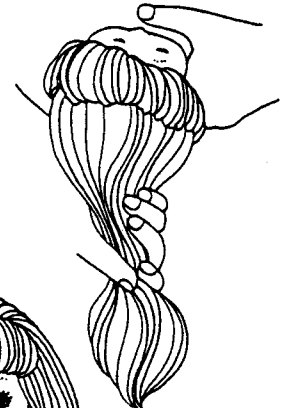
6

After shampooing, rinse the hair completely with cold tap water in a sink or tub.*



7

Squeeze excess water out of hair. Pat dry with paper towels (**do not rub**) and comb tangles out with styling comb.



8

Now baby's hair is ready for more color! (For more intense color, let hair dry before coloring again.)

*If water gets inside the doll, open the drain plug on her back to empty.

Kenner

©1994 Kenner, a
division of Tonka Corporation,
Cincinnati, Ohio 45202