



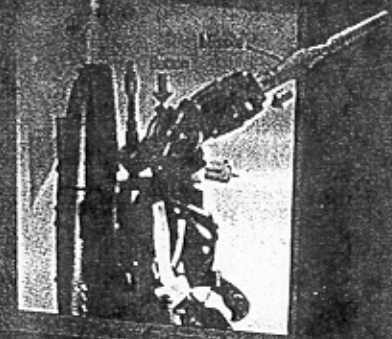
1. Snap backpack on figure's waist as shown. To deploy anchor and string, push upward on Catch Trigger. Release Catch Trigger when desired length is reached.



2. Attach suction cup to clean, smooth surface. Thread string through hook in seat harness. Tie anchor to something like a chair leg.



3. String must be taut before pressing seat harness RELEASE BUTTON to send BATMAN® on his way.



4. Load missile into Launcher. Press button to fire.

COLLECT ALL THESE EXCITING BATMAN® FIGURES AND VEHICLES!



Combat Belt BATMAN® is ready for action with flame grapping hook, launching missile and capture cuffs!



Turbojet BATMAN® has a rocket pack with turbojet engines and a firing wrist rocket!



Robin® has an adjustable turbo glider which can drop missiles on villains below!



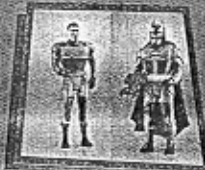
Two-Face® takes chances when fighting BATMAN®. His roulette wheel hands on FIRE his can launch a two-headed missile!



BATMAN® better keep an eye on The Penguin®! His launching Hypno-Spin Umbrella can whirl off like a top!



The Riddler® is not fooling around! He has a question mark launcher that really fires!



Convert Bruce Wayne™ to BATMAN® with special snap-on armor! With his powerful hand weapon, BATMAN® can fight off any villain.



Look out! The Joker® has a water-spraying Laughing Gas gun and a smile mask to create mischief!



Could Man-Bat® be a match for BATMAN®? With his flapping wings and tow rope, Man-Bat® is a fearsome foe!



Throw Sky Dive BATMAN® in the air and watch his silver nylon parachute really work!



Watch out for Scarecrow™ with his fierce thrashing sickle that really spins. His light-up eyes give a piercing stare at BATMAN®.



Infrared BATMAN® has an ultra-violet Bat-Signal™ disk launcher that keeps criminals at a distance! His infrared suit will deflect any harmful rays that villains shoot his way!



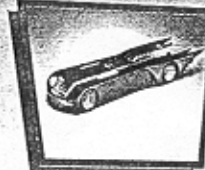
The Batcycle™ has motorized turbo power! Just rev it up and off it goes! Even performs wheelies!



The Jokermobile™ is a wacky roadster full of surprises! Pull back the hood to reveal silly weaponry including a launching smile missile!



The B.A.T.V. (BATMAN™ All-Terrain Vehicle) converts from high-speed mode to upright Armored Cruiser mode in an instant! Also fires a ground level missile!



The Batmobile® from "BATMAN™ The Animated Series" is two vehicles in one, with a Launching Pursuit Jet for surprise attacks!



The Hoverbat™ is loaded with crimefighting equipment, including a missile launcher, villain capture claw and a rear loading dock to haul away villains.



The Bat-Signal™ Jet projects a real electronic Bat-Signal™ light across the sky to signify victory after its camo missile firepower has conquered menacing villains!



The Robin™ Dragster looks like a sleek racer until trouble approaches... and the vehicle can be converted into a high riding 4x4 power machine! Fires a mega Batarang™ missile!



Play your favorite BATMAN® adventures with the BATMAN® Armor Set. Includes mask, cape and chest plate in the new colors from "BATMAN™ The Animated Series," along with a new dual stream water blaster!

PROOF OF PURCHASE



0 76281 63998 7
HIGH WIRE BATMAN® FIGURE

IN THE INTEREST OF BETTER QUALITY AND VALUE, WE ARE CONSTANTLY IMPROVING AND UPDATING OUR PRODUCTS. CONSEQUENTLY PRODUCTS ON THIS PACKAGE MAY SOMETIMES DIFFER FROM THE MODEL ENCLOSED.



BATMAN and all related elements are the property of DC Comics Inc. TM and © 1993 All Rights Reserved.

Kenner

© Kenner Products, A Division of Tonka Corporation, Cincinnati, Ohio 45202

MADE IN MACAU M-004A

507 026 00