

## BattleBots Competition Timeline:

- May 2001- San Francisco, California- All Weight Classes-Comedy Central Season 3
- November 2000- Las Vegas, Nevada- All Weight Classes-Comedy Central Season 2
- June 2000- San Francisco, California- All Weight Classes-Comedy Central Season 1
- November 1999- Las Vegas, Nevada- HeavyWeight and Super HeavyWeight's Only- Pay-Per-View Special
- August 1999- Long Beach, California- All Weight Classes- webcast



THE ULTIMATE  
TRIBUTE  
TO ROBOT  
COMBAT



THE GIANT NUT

## Who are the BattleBot Builders?

Do-It-Yourselfers. Artists, rocket scientists, engineering students, architects, computer programmers, and little kids. All have a passion for "knowing how things work!"

## Cost to build a Bot?

Cost depends on: weight class, materials- new versus salvaged parts- design, planning. \$600.00 - \$50,000.00

## What prizes are awarded at competitions?

Prize Money, a Giant Nut Trophy, and the Glory of Dominating Your Weight Class.

Battle Bots Stats (Grid)

Designator Class	Weight classes in lbs.		Match time limits in minutes		# in pit crew
	Wheeled	non-Wheeled	Robot Duel	Robot Rumble	
Super HeavyWeight	211.0 - 325.9	316.0 - 488.9	3	5	5
HeavyWeight	116.0 - 210.9	174.0 - 315.9	3	5	4
MiddleWeight	59.0 - 115.9	88.0 - 173.9	3	5	3
LightWeight	25.0 - 58.9	25.0 - 87.9	3	5	2

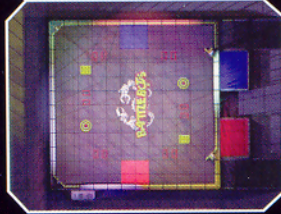
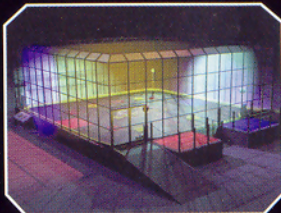


# THE BATTLEBOX ARENA

## ARENA INFORMATION

### The ultimate arena for Robot combat:

A 35-ton steel and Lexan arena engineered for maximum safety on the outside and maximum torture on the inside. The BattleBox is equipped with a variety of traps and hazards drivers can use to their advantage.



## BATTLEBOX SPECIFICATIONS

- The floor is 144 (4' x 4' x 2') modules covered by 1/8" steel floor plating painted with black traction paint.
- The walls are 1" thick and 24' high Lexan supported with steel square tubing.
- Robots enter on 8' x 16' ramps.
- The BattleBox has two 8' x 8' entry/exit doors.
- BattleBots begin their matches from either the red or blue square.
- Drivers control their Bots from their respective 8' x 12' x 3' red and blue stages.

## RULES AND REGULATIONS

A limited number of members are allowed for the pit crew. Bot driver must exhibit good sportsmanship at all times. Forbidden weapons may not be used.

### Two types of matches for BattleBots:

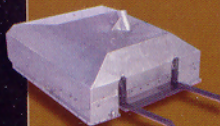
- 1. Robot Duel:** One-on-one tournament with weight classifications. BattleBots win by incapacitating their opponents. If both Bots are mobile when the match ends, the winner is decided by Official BattleBots judges.
- 2. Robot Rumble:** Free-for-all combat between multiple Bots of the same weight class. Victory is awarded to the most aggressive BattleBot.

## FORBIDDEN WEAPONS

- Electricity:** No stun guns, cattle prods, or jamming equipment, etc.
- Liquids:** No water, liquified gases, or chemicals, etc.
- Explosives:** No gunpowder, or military explosives, etc.
- Lights:** No lasers, strobe lights, or flood type lights, etc.
- Heat/cold:** No flamethrowers, torches or liquid nitrogen, etc.
- Entanglement devices:** No fishing line, netting, string, tape, etc.

# HEAVYWEIGHT

## VLAD THE IMPALER



**Weight:** 208 lbs.  
**Type:** Wheeled  
**Primary Weapon:** Drag racing fork lift  
**Main Builder:** Gage Cauchois  
**Battles:** 18  
**Wins:** 15  
**Special Feature:** Fast, maneuverable, and heavily armored.

## BLENDO



**Weight:** 203 lbs.  
**Type:** SpinBot  
**Primary Weapon:** Rotating Blade  
**Main Builder:** Jamie Hyneman  
**Battles:** 3  
**Wins:** 0  
**Special Feature:** Rotating flywheel and armor.

## KILLERHURTZ



**Weight:** 203 lbs.  
**Type:** Wheeled  
**Primary Weapon:** Axe  
**Main Builder:** John Reid and Dominic Parkinson  
**Battles:** 14  
**Wins:** 9  
**Special Feature:** Pneumatic cylinder generating a ton of force drives axe.

## BIOHAZARD



**Weight:** 209.5 lbs.  
**Type:** Wheeled  
**Primary Weapon:** Actuated lifting arm  
**Main Builder:** Carlo Bertocchini  
**Battles:** 16  
**Wins:** 14  
**Special Feature:** Six wheel drive. Anti-wedge fenders. Held together by 700 machine screws.

## HAZARDS & ARENA WEAPONS

### 1

#### Kill Saws:

These, 20" dual carbide tipped, SystIMatic blades raise and lower with over 60 lbs. of pneumatic force.



### 2

#### Pulverizers:

Heavy duty stainless steel mallets that pound Bots into oblivion.



### 3

#### Hell Raisers:

Totally uplifting! 3' x 4' steel plates are powered by compressed gas.



### 4

#### Ram Rods:

A surprise attack from below! These Carbide tipped spears rise with over 60 lbs. of pneumatic force!



### 5

#### Spike Strip:

Over 180 menacing and potentially fatal carbide tipped spikes line the Arena's inside perimeter.



### 6

#### The Vortex:

If you get TOO close, these 3'diameter robot whirlpools will suck you in and spit you out!



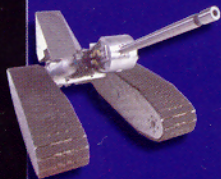


# SUPER HEAVYWEIGHT



## GINSU

**Weight:** 325 lbs.  
**Type:** Wheeled  
**Primary Weapon:** Lots of saws  
**Main Builder:** Trey Roski  
**Battles:** 2  
**Wins:** 0  
**Special Feature:** Modular body design allows for maximum slicing and dicing.



## DOOALL

**Weight:** 303 lbs.  
**Type:** Treaded  
**Primary Weapon:** Compressed gas powered ram rod  
**Main Builder:** Scott LaValley  
**Battles:** 8  
**Wins:** 5  
**Special Feature:** Tank treads allow Bot to achieve maximum mobility.



## MECHADON

**Weight:** 472 lbs.  
**Type:** StompBot  
**Primary Weapon:** Big steel claws  
**Main Builder:** Mark Setrakian  
**Battles:** 4  
**Wins:** 2  
**Special Feature:** Freakish range of mobility.



## DIESECTOR

**Weight:** 322.5 lbs.  
**Type:** Wheeled  
**Primary Weapon:** Inevitable jaws  
**Main Builder:** Donald Hutson  
**Battles:** 6  
**Wins:** 5  
**Special Feature:** 360 degree of offence and defence.



## MINION

**Weight:** 325 lbs.  
**Type:** Wheeled  
**Primary Weapon:** Fireman's saw  
**Main Builder:** Christian Carlberg  
**Battles:** 8  
**Wins:** 7  
**Special Feature:** Rugged drive train and Lexan wedge.

# MIDDLEWEIGHT



## EL DIABLO

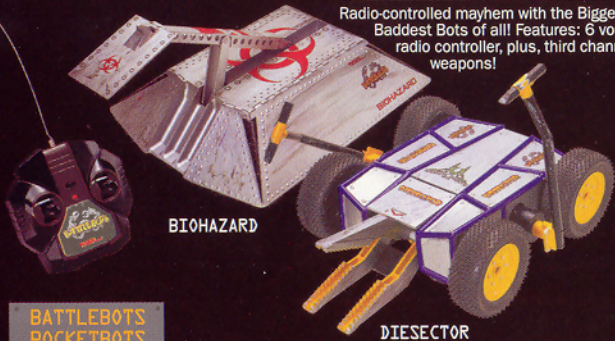
**Weight:** 115 lbs.  
**Type:** Treaded  
**Primary Weapon:** Swappable trench saw  
**Main Builder:** Zachary Bieber  
**Battles:** 5  
**Wins:** 4  
**Special Feature:** 1500 RPM spinning barrel. Ability to run upside down.



# KICK SOME BOT WITH YOUR OWN BATTLEBOT!

## BATTLEBOTS PRO SERIES

Radio-controlled mayhem with the Biggest Baddest Bots of all! Features: 6 volt radio controller, plus, third channel weapons!

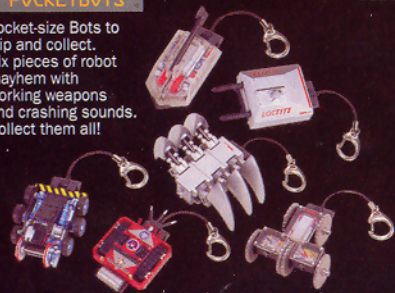


BIOHAZARD

DIESECTOR

## BATTLEBOTS POCKETBOTS

Pocket-size Bots to clip and collect. Six pieces of robot mayhem with working weapons and crashing sounds. Collect them all!



## HEADSET WALKIE TALKIES

Hands-free, Hi-tech Walkie Talkie with 100 foot range. Communicate like the BattleBots crews and referees!

## MECHADON HAND-HELD GAME

Capture and Crush the competition. Move the game back and forth - YOU control the action in the BattleBox! Digitized sound effects.

## BATTLEBOTS CUSTOM SERIES

Build, Battle and Customize! Four full-function radio controlled Bots with mix and match: armor, weapons, and more!



## BATTLEBOTS CUSTOM PLAYSET

Kick some BattleBots! Playset includes TWO Bots: Blendo and DooAll. Plus, custom parts: armor, weapons and more!

## TIGER ELECTRONICS

A division of Hasbro, Inc.  
*Where Technology Comes to Play!™*

®, TM, & © 2001 Tiger Electronics  
All rights reserved.  
980 Woodlands Parkway,  
Vernon Hills, IL 60061, USA  
www.tigertoys.com



All Rights Reserved  
Copyright 2001 BattleBots, Inc.  
701 DeLong Ave., Unit K  
Novato, CA 94945  
www.battlebots.com



In the interest of better quality and value, we are constantly improving and updating our products. Consequently, actual products may vary slightly.

200104740CLTI-01