

3. COMPLETE SETUP

Carefully remove the starships, starship stands and pegs from the plastic bags. Discard the bags. Then divide the pegs equally between the two players. Each player should have:

- 100 white MISS pegs
- 50 red HIT pegs
- 25 blue SCAN pegs*

* used for ADVANCED MISSION only

Place your pegs in the storage compartments under the flip door on both sides of the game unit, as shown in Figure 2.

Decide which player will command the Republic Star Fleet™ and which player will command the Imperial Star Fleet™. The Republic Star Fleet Commander takes the 5 Republic starships (Star Cruiser™, Millennium Falcon™, X-Wing Fighter™, Naboo Star Fighter™, Jedi Star Fighter™) and the Imperial Star Fleet Commander takes the 5 Imperial starships (Star Destroyer™, Sith Infiltrator™, Tie Interceptor™, Droid Star Fighter™, Slave 1™). Each player then takes 1 5-hole stand, 1 4-hole stand, 2 3-hole stands, and 1 2-hole stand and inserts the post at the top of the stand into the hole in the bottom of the starship as shown in Figure 3.

Figure 3



Star Cruiser™ (5 Hole Stand)



Millennium Falcon™ (4 Hole Stand)



X-Wing Star Fighter™ (3 Hole Stand)



Naboo Star Fighter™ (3 Hole Stand)



Jedi Star Fighter™ (2 Hole Stand)



Star Destroyer™ (5 Hole Stand)



Sith Infiltrator™ (4 Hole Stand)



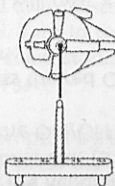
Tie Interceptor™ (3 Hole Stand)



Droid Star Fighter™ (3 Hole Stand)



Slave 1™ (2 Hole Stand)



Insert the post of the stand into the hole in the bottom of the starship.