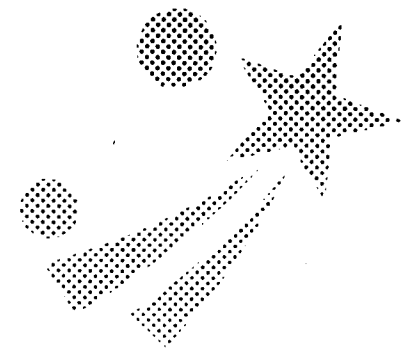


# COLORBLASTER™ DRAWING SYSTEM T-MASTER™ DESIGN SET



**1** Carefully separate stencil sheets.

Punch out die cut shapes in stencils with a pencil.

**2** Remove the grid from the frame.

**3** Insert the grid inside a **washed** T-shirt, centering the area you want to spray. Replace the frame. Pull the T-shirt so the spraying area is tight on the grid. Tuck remainder of T-shirt under frame to avoid overspray.

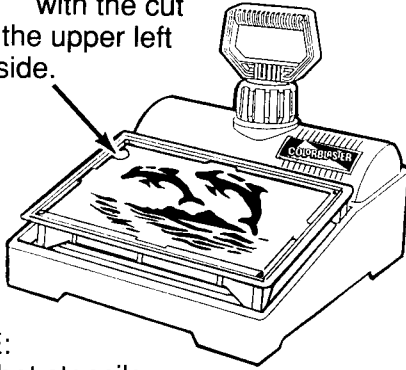
**4** After placing the ColorBlaster™ Drawing System on several sheets of newspaper, place the frame onto the tray. Now you are ready to start. Fully extend handle and pump it 50 quick strokes. If sufficient pressure is not attained check all fittings. After using your sprayer, pump as needed to maintain proper pressure. Remember, the more you pump, the more you spray.

**5** Shake paint bottle very well. Remove the cap. Hold the bottle in an upright position and screw it all the way into the spray head adapter.

**6** Hold the sprayer by its sides, pointing away from face and eyes. Snap spray head adapter into sprayer, making sure the sprayer tip fits into the hole in the spray head adapter tip.



7 Lay the stencil in the frame with the cut out in the upper left hand side.

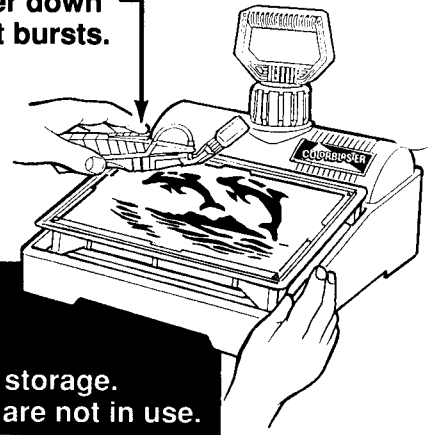


NOTE:  
Alphabet stencils do not have cut outs on them.



8 Hold sprayer away from the stencil 1 to 2 inches to create airbrush effect. Concentrate spray into only the cut out area of the stencil.

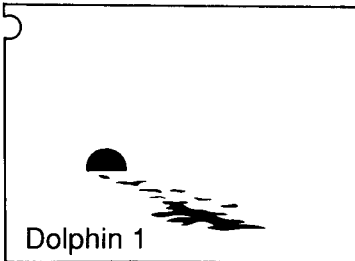
Spray by pressing purple trigger down in short bursts.



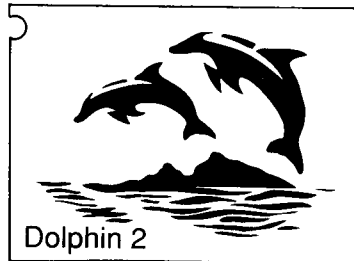
When finished, remove the bottle immediately. Fill spray head adapter with water and spray out between each color and before storage. Keep lids on the bottles when they are not in use.

■ **IMPORTANT:** Heatset design after it is thoroughly dry. Turn the shirt inside out and iron the back of the design for one minute at a high setting.

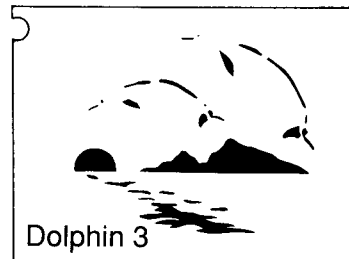
You can create the dolphin and beach designs... choose a stencil and...



Dolphin 1



Dolphin 2



Dolphin 3

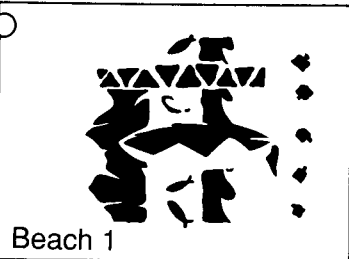


↑ Spray the lightest color on number 1. Remove stencil and dry it with a tissue. Let design dry.

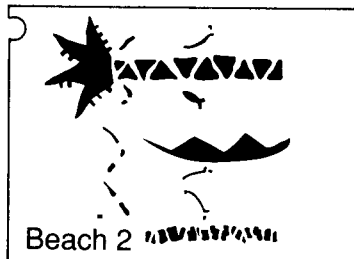
↑ If necessary, now pump again. Spray a darker color on number 2. Remove stencil and dry it with a tissue. Let design dry.

↑ If necessary, pump again. Spray the darkest color on number 3. Remove stencil and dry it with a tissue...

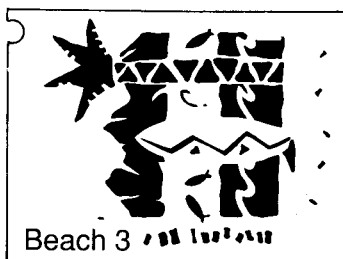
↑ and see the finished design. Let design dry. **Heatset design after it is thoroughly dry. Turn the shirt inside out and iron the back of the design for one minute at a high setting.**



Beach 1



Beach 2



Beach 3



Or make a design of your own using the alphabet stencils!

### CLEAN UP

To clean up the pen holder, remove the paint bottle, **hold the spray head adapter under running water and spray water through it after every use. It is important to do this between colors and especially before storage of the unit.** Always keep the caps on the bottles of ink when not in use.

### TROUBLE SHOOTING TIPS

#### PROBLEM

- Tank will not pressurize
- A hissing sound is heard.
- The pumping becomes difficult.
- Air does not come out of sprayer.

#### SOLUTION

Check to be sure the cap is on tight, with "O" Ring in place and hose is connected to tank and sprayer.  
Check for air leaks and tighten all connections.  
Take apart the pump and lubricate the piston "O" Ring with petroleum jelly.  
Pump tank 50 strokes and try again.