



Twirl 'n Top Pizza Shop™

31989

AGES 3+

NOTICE TO PARENTS:
CONTAINS WHEAT. NONTOXIC.
CONFORMS TO ASTM D-4236.



CONTENTS:
oven, cheese sprinkler,
sprinkler handle, dish, server,
cutter, pan and 3 two-ounce
and 1 five-ounce cans of
PLAY-DOH Brand Modeling
Compound (Net wt. 11 oz.,
311 g).

Parents download the FREE
PLAY-DOH Play-Dates App from
the App Store!



Get fun and easy Play-Date ideas including
activities, crafts and snack recipes!



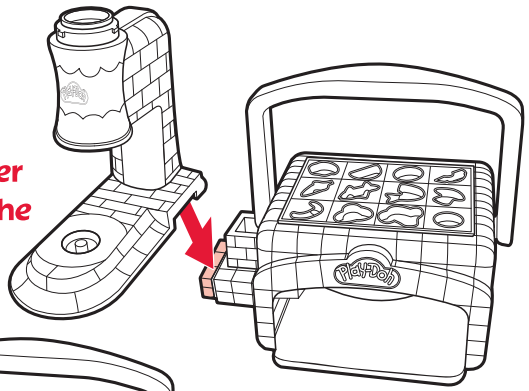
319890000 Asst. PN 7199490000

PLAY-DOH and the PLAY-DOH logo are trademarks identifying quality modeling compound
products produced exclusively by Hasbro, Inc.

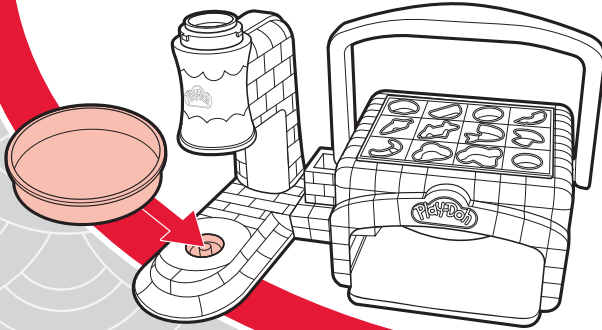
© 2011 Hasbro. All Rights Reserved. TM & © denote U.S. Trademarks. U.S. Patent No. 6713624.

Assembly

Attach "cheese" sprinkler to "oven" by snapping the two pieces together.



Place dish underneath sprinkler. The sprinkler handle will be attached during play.



How to make PLAY-DOH pizzas

For Best Results:

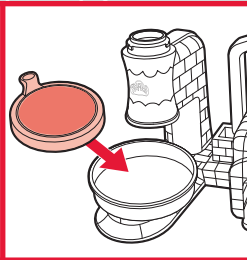
After you're finished playing, remove sprinkler handle and clean out the remaining compound.



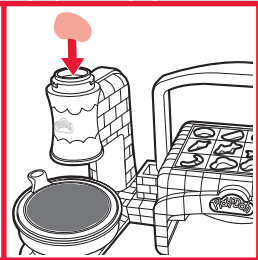
Slightly flatten a ball of compound on the pan and place in "oven."



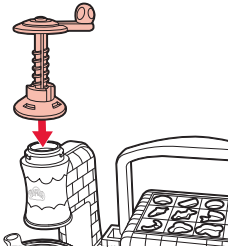
Pull down handle to create PLAY-DOH crust.



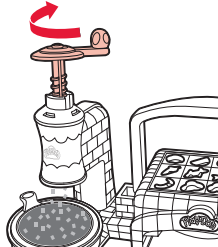
Place pan with "crust" in dish.



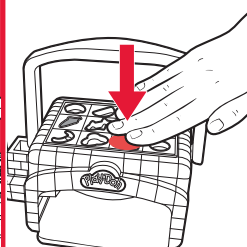
Fill sprinkler with compound.



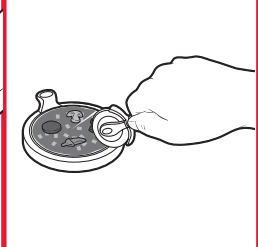
Attach handle: just twist and lock.



Turn the handle to grate PLAY-DOH cheese.



Create "toppings" using the molds on top of the "oven."



Add "toppings" to "pizza," then cut and serve!