



Some assembly required.

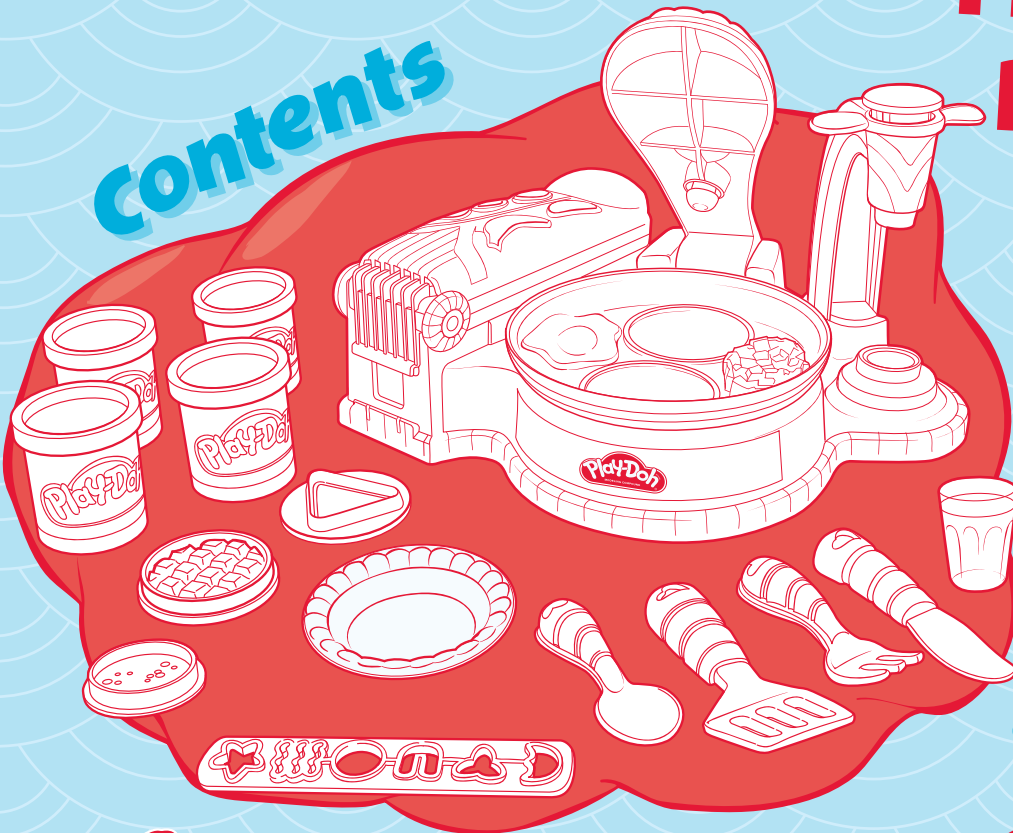


24395

Flip 'n Serve Breakfast™

Contents

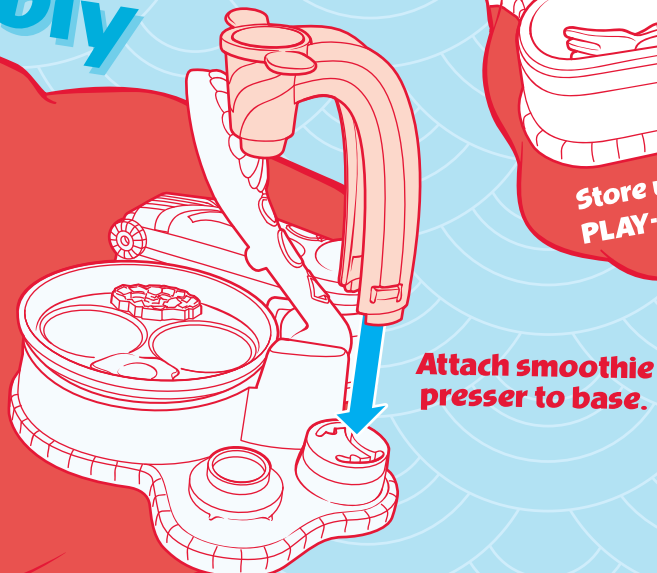
CONTENTS: playset base with griddle, spoon, fork, knife, spatula, cup, smoothie presser (2 pieces) 3 griddle stamps, rail, serving dish, instructions and 4 two-ounce cans of PLAY-DOH Brand Modeling Compound (Net wt. 8 oz., 226 g).



Storage

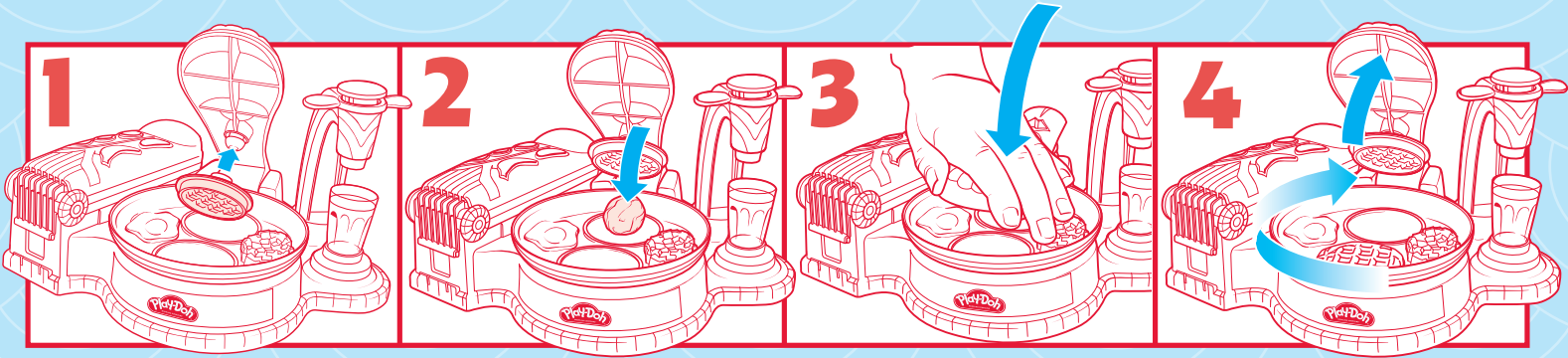


Assembly



NOTICE TO PARENTS: CONTAINS WHEAT. NONTOXIC. CONFORMS TO ASTM D-4236.

How to make PLAY-DOH treats with your Flip 'n Serve Breakfast™



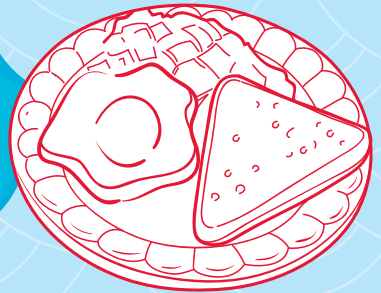
1 Choose a griddle stamp and snap it onto underside of lever.

2 Place PLAY-DOH compound on griddle.

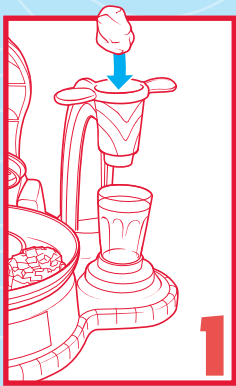
3 Press down lever to make a breakfast treat.

4 Lift lever and watch griddle spin!

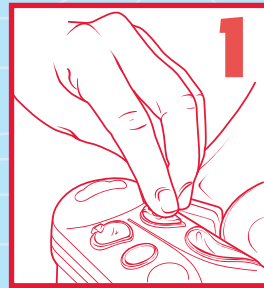
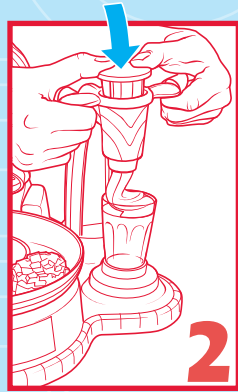
Trim excess compound and “serve”!
You can swap out the stamps for more breakfast fun!



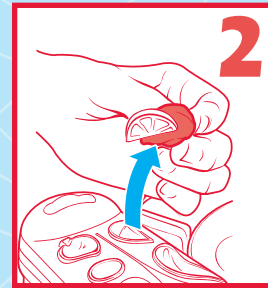
Here are more FRESH IDEAS™



1 Use the smoothie press to make pretend smoothies, or add “syrup” and “whipped cream” to your “waffles” and “pancakes”!



1 Use the mini molds on top of the handle and griddle lever to create pretend fruits and pastries!

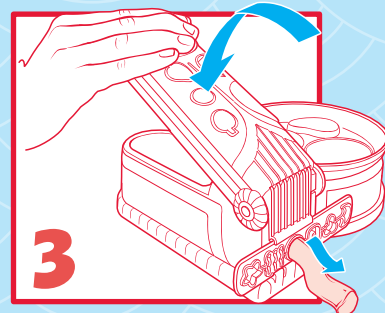
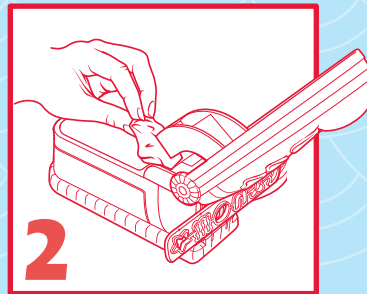
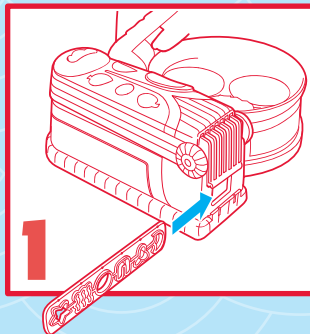


TIP!

Removing excess PLAY-DOH compound from the mini molds is easy. Just roll some compound into a ball. Then, place it in the mold. The leftover compound will stick to the ball.

Clean Up

Remove excess PLAY-DOH Modeling Compound, allow remaining compound to dry, then scrape or vacuum it away.



PLAY-DOH and the PLAY-DOH logo are trademarks identifying quality modeling compound products produced exclusively by Hasbro, Inc. © 2010 Hasbro. All Rights Reserved. TM & © denote U.S. Trademarks. U.S. Patent No. 6713624.

PN 7089980000

For more FRESH IDEAS™ visit www.Play-Doh.com