
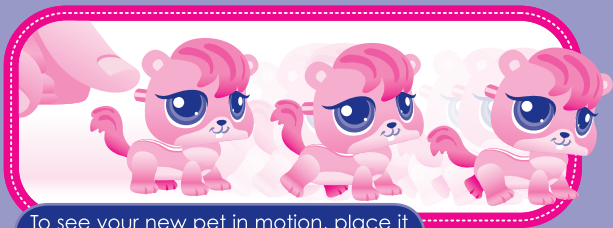


AGES 4+

 **x2** A76 or LR44 Alkaline  
**BATTERIES INCLUDED**

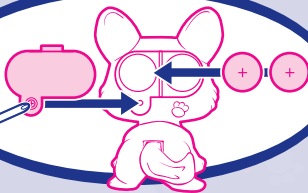
Replace with 2 x 1.5V "A76" or LR44 size alkaline batteries. Phillips/cross head screwdriver (not included) needed to replace batteries.



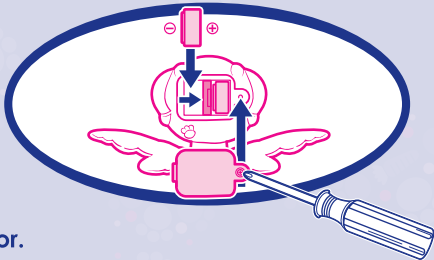
To see your new pet in motion, place it on a smooth, hard surface, then press the button on the back of its head.

**NOTE:** Do not place pet in water.

## To Replace Batteries



OR



1. Use a Phillips/ cross head screwdriver (not included) to loosen screw in battery compartment door.
2. Remove door. Remove and discard old batteries.
3. Insert 2 fresh "A76" or LR44 size alkaline batteries. Replace door and tighten screw.

# IMPORTANT: BATTERY INFORMATION



## CAUTION:

1. As with all small batteries, the batteries used with this toy should be kept away from small children who still put things in their mouths. If they are swallowed, promptly see a doctor and have the doctor phone (202) 625-3333 collect. If you reside outside the United States, have the doctor call your local poison control center.
2. Always follow the instructions carefully. Use only batteries specified and be sure to insert them correctly by matching the + and – polarity markings.
3. Do not mix old batteries and new batteries or standard (carbon-zinc) with alkaline batteries.
4. Remove exhausted or dead batteries from the product.
5. Remove batteries if product is not to be played with for a long time.

6. Do not short-circuit the supply terminals.
7. Should this product cause, or be affected by, local electrical interference, move it away from other electrical equipment. Reset (switching off and back on again or removing and re-inserting batteries) if necessary.
8. **RECHARGEABLE BATTERIES:** Do not mix these with any other types of batteries. Always remove from the product before recharging. Recharge batteries under adult supervision. **DO NOT RECHARGE OTHER TYPES OF BATTERIES.**

Pet type and colors may vary.

© 2011 Hasbro. All Rights Reserved.  
TM & ® denote U.S. Trademarks.  
33316 Asst.  
PN 714590000



Questions? Call: 1-800-327-8264