

ELECTRONIC

DAYS OF Thunder™

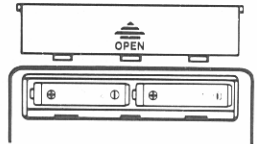
LCD GAME**1 THE DAYS OF THUNDER™ STORY**

The movie classic was just the beginning. Now it's you sitting behind the wheel with all the sights (and especially the sounds) of the fastest stock car race you could ever imagine. There are 99 levels of wind-in-your-face high speed action. You compete against the other drivers, the track, and, of course, the clock. If you crash 3 times on any level, your hopes (as well as your car) will go up in smoke!

2 INSERTING THE BATTERIES

To insert batteries, remove the battery compartment cover at the back of the game. (To remove cover push in direction of the arrow.)

Insert two "AA" batteries, UM-3 or equivalent (not included), making sure to align "+" and "-" as shown.



After battery insertion, the ACL switch may be pushed only if the game doesn't work properly. (Use a ball-point pen.) The display should appear as in the diagram below.



3 CAUTION



High temperatures will destroy the unit. Do not leave unit in direct sunlight.



Do not press the liquid crystal display screen and avoid heavy shock or the display may fail.



Do not use a pencil or pin to press the ACL switch. Use a ball-point pen.



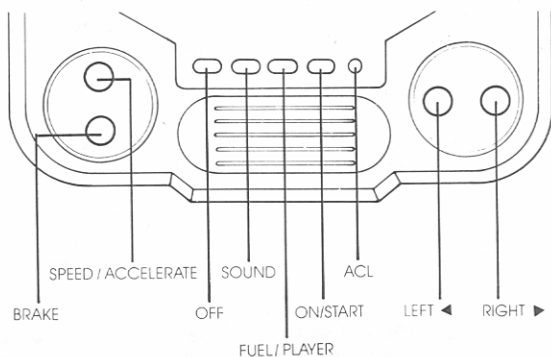
Clean only with a piece of soft dry cloth.

Replace batteries at the first sign of erratic operation.

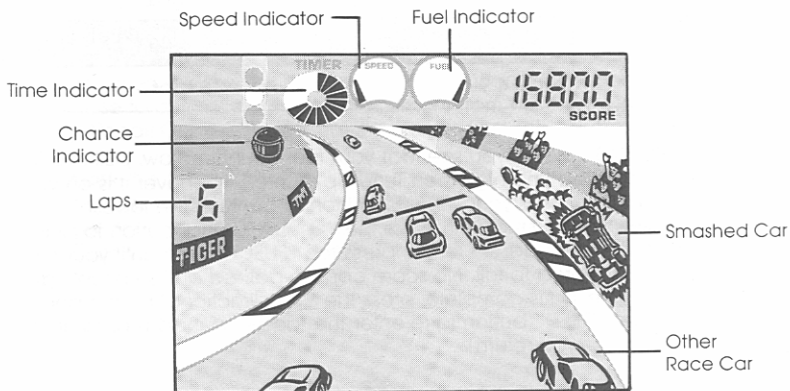
4 The OBJECT OF THE GAME

To win the game and the car race competition, you must finish each of the first 10 levels before time runs out. You only have 3 chances per level and you lose a chance each time you crash! There are a maximum 99 levels. Once you pass level 10 and are the champion, you then can compete on levels 11-99 for the highest possible score.

5 CONTROL GUIDE



ON/START	To turn on the unit. To start the race.
FUEL / PLAYER	To refill the fuel tank. To select 1 or 2 players.
SOUND	To control sound: on or off.
OFF	To turn off the unit.
LEFT (◀)	To select track to the left of your car.
RIGHT (▶)	To select track to the right of your car.
SPEED / ACCELERATE	To boost engine power for higher speed.
BRAKE	To de-accelerate your car.



6 FEATURES

- 99 levels of play
- Realistic sounds of the road
- Speedometer to observe speed
- 5 speed stock car
- Timer
- Fuel meter
- Best score retained
- Sound on/off control
- Built-in auto power-off timer

7 GAME SUMMARY

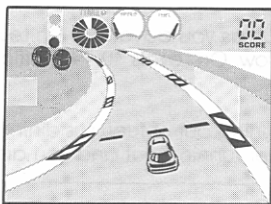
Like all stock car racers, you must always race against the clock. If the timer runs out on any level of play, you lose.

You also have to steer with precision as well as drive with speed — you only receive 3 chances per level. Each time you crash, you lose a chance!

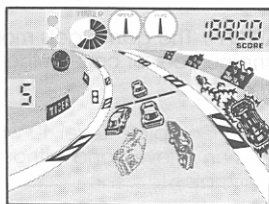
Also, like any driver, you have to watch your fuel supply! Reduce down to the lowest speed to pull into the high-tech Service Tune Up Center on the left of the track when you need to refuel.

If you can progress through the first 10 levels of play, then you are the champion! Then like all of the greatest champions, you will decide to race against your toughest opponent — yourself! On Levels 11-99, you compete for your highest possible score.

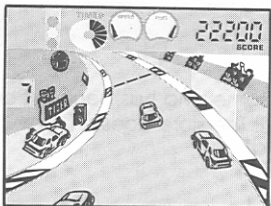
You can choose to complete alone, or to race with a second player.



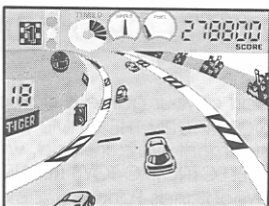
Press your SPEED button when the three "circle lights" count down and then disappear!



Avoid crashing!



Pull over to the left and refuel at the high-tech Tune Up Center!



If you finish level 10, you are the best of the stock car competition!

8 HOW TO PLAY

Press the "ON/START" button to turn on the game. You'll hear a little racing melody and "Player 1" is displayed.

Press "PLAYER" button to choose between 1 or 2 players.

Press "ON/START" button a second time. The best score is displayed, and then the "circle lights" count down and disappear and the race begins!

As soon as the race starts, press your "SPEED" button or else you will get rammed from behind! You begin with a full timer and full fuel.

PRECISION PLUS SPEED : Use the LEFT "◀" and RIGHT "▶" directional buttons to steer around other cars on either side of your car and use the "SPEED" and "BRAKE" buttons to achieve the fastest possible speeds without hitting anything in front or behind you.

5 SPEED CAPACITY : By keeping the "SPEED" button pressed down, you activate your "5 speed accelerator"! Your car will automatically accelerate by 5 steps until you reach full speed. You can always slow down by taking your hand off the "SPEED" button or slow down more rapidly by pressing the "BRAKE" button. Your speed indicator at the top of your screen will show you your speed changes from low to high and all the speeds in-between!

LAPS : The first few levels of racing have a shorter number of laps (to give beginning drivers a chance to settle down). Beginning with level 4, each level has 18 laps:

Level 1	10 laps
Level 2	12 laps
Level 3	15 laps
Levels 4-99	18 laps

REFUELING : When you see that your fuel is running low, pull into the refueling area (the high-tech Tune Up Center) whenever it is on your left. To enter, press your "BRAKE" button to achieve the lowest possible speed, and then press the "◀" directional button to pull over to the left. Then to refuel, press the "FUEL" button until your fuel meter is restored to full. No score can be gained during refueling. When refueling is complete, press the "▶" directional button and then the "SPEED" button to re-enter the race — but don't crash into anybody as you return!



CRASHING : Whenever you crash, you must start again at the point of crash impact. If you crash 3 times on any level, the game is over!

2 PLAYER GAME : If you choose to play with 2 players (using the "PLAYER" button at the start of the game), then the game will automatically switch to another player when a level is completed. When one player loses the game, the second player plays alone until he wins or loses.

SCORING : Scoring depends on the distance your car travels and the number of cars that have been passed. Bonus on a finished race depends on level, time, and fuel remaining.

CHECK YOUR CONTROLS : Check your fuel supply — don't ever run out of gas or the game is over.

Check your number of crashes — 3 crashes on any level and the game is over.

Check the timer — if it runs out on any level, the game is over.

Check your speed on the speedometer.

Press the "SOUND" button to race in silence. Press "SOUND" button again to regain all the sounds of the track!

Press "OFF" button to turn off the game, but don't worry if you forget — there's an automatic power shut-off.

Press "ON/START" to begin a new game.

STRATEGY : The game gets more difficult as you advance. On Levels 1-9, the number of cars on the road is low. On Levels 10-99, traffic is very high!

TO WIN : Complete Level 10 without running out of fuel, sustaining 3 crashes on a level, and without the timer running out and you are the champion!

On Levels 11-99, you compete for the highest possible score. Now the time has come...Prepare to start your engines!

9 DEFECT OR DAMAGE

If a part of your game is damaged or something has been left out, DO NOT RETURN THE GAME TO THE STORE. The store doesn't have replacement parts. Instead, write to us at:
TIGER ELECTRONIC TOYS REPAIR CENTER
980 Woodlands Parkway
Vernon Hills, Illinois 60061, U.S.A.

In your note, mention the name of your game, the game's model number, and tell us briefly what is the problem. Also include sales slip, date and place of purchase and price paid. We will do our best to help.

10 90-DAY LIMITED WARRANTY

Tiger Electronic Toys warrants to the original consumer purchaser of any of its electronic games that the product will be free of defects in material or workmanship for 90 days from date of purchase.

During this 90-day warranty period the game will either be repaired or it will be replaced (at our option) without charge to the purchaser, when returned either to the dealer with proof of the date of purchase, or when returned prepaid and insured with proof of date of purchase, to Tiger Electronic Toys, 980 Woodlands Parkway, Vernon Hills, Illinois 60061, U.S.A.

Units returned without proof of the date of purchase, or units returned after the 90-day warranty period has expired, will be repaired or replaced (at our option) for a service charge of US\$12.00. Payment must be made by check or money order. This non-warranty service will only be available for one year from the date of purchase. All non-warranty units must be returned postage paid and insured to TIGER ELECTRONIC TOYS, REPAIR CENTER, 980 WOODLANDS PARKWAY, VERNON HILLS, ILLINOIS 60061, U.S.A.

Tiger Electronic Toys will not be liable for loss of use of the product or other incidental or consequential costs, expenses, or damages incurred by the purchaser. Any implied warranties are limited in duration to the 90-day period from the original date of purchase.

This warranty gives you specific legal rights and you may also have other rights which vary from state to state so the foregoing limitations may not apply to you. This warranty does not cover damage resulting from accident, unreasonable use, negligence, improper service or other causes not arising out of defects in material or workmanship.

HOW TO GET SERVICE FROM THE TIGER ELECTRONIC TOYS REPAIR CENTER ON YOUR ELECTRONIC GAME DURING AND AFTER THE 90-DAY WARRANTY PERIOD. During the 90-day warranty period, you may have a defective game replaced at the dealer from which it was purchased. If, however, during the 90-day warranty period, you choose to obtain repair or replacement from the Tiger Electronic Toys Repair Center, please make the arrangements described below:

- 1) Pack the game carefully in the original box. If the game box is not available, use a good carton with plenty of newspaper, styrofoam or other padding all around and tie it securely.
- 2) Carefully print on the box or carton the following name and address
TIGER ELECTRONIC TOYS,
REPAIR CENTER
980 Woodlands Parkway,
Vernon Hills, Illinois 60061, U.S.A.
Also, don't forget to show your return address.
- 3) Put parcel post stamps on the package; insure the package then mail.

After the 90-day warranty period and up to one year from the date of purchase, do all of the above PLUS enclose your check or money order for US\$12.00 payment for the repair service.

TM & © 1990 Paramount Pictures. All rights reserved.

© 1990 TIGER ELECTRONICS, INC.

TIGER ELECTRONICS, INC.
980 Woodlands Parkway,
Vernon Hills, Illinois 60061, U.S.A.