



Easy-Bake[®] BRAND

AGES 8+

65797/65756 Asst

Birthday Cake Bake Set

Thank you for choosing this EASY-BAKE Set! For maximum enjoyment of this product, be sure to follow all instructions carefully.

Parents Please Note:

Wash all parts thoroughly before use. Wash EASY-BAKE Oven parts in warm, soapy water and rinse thoroughly. Wash birthday candle and musical cake base gently with a soft, damp cloth.

Do not use a dishwasher to clean any parts.

Mixes can also be used in your kitchen oven (bake at 375°).

This set includes:

- 1 white cake mix
- 1 chocolate frosting mix
- 1 musical cake base
- 1 birthday candle

You will also need:

- mixing bowl
- mixing spoon
- teaspoon
- non-stick cooking spray.



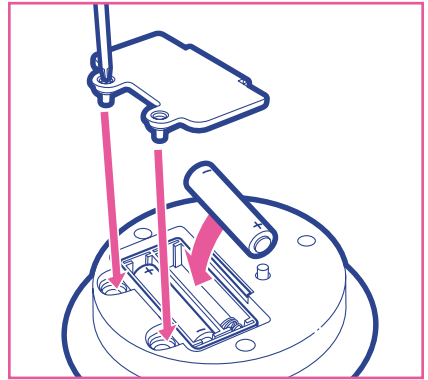
TO INSERT BATTERIES

Use a Phillips/cross head screwdriver to remove screws in battery cover. Remove cover and insert 3 x 1.5V “AAA” or R03 size batteries. Alkaline batteries recommended. Replace cover and tighten screws.



CAUTION:

1. As with all small batteries, the batteries used with this toy should be kept away from small children who still put things in their mouths. If they are swallowed, promptly see a doctor and, in the U.S., have the doctor phone (202) 625-3333 collect, or, in Canada, have the doctor call your provincial Poison Control Centre.
2. Make sure the batteries are inserted correctly and always follow the toy and battery manufacturers’ instructions;
3. Do not mix old batteries and new batteries or alkaline, standard (carbon zinc) or rechargeable (nickel-cadmium) batteries.



IMPORTANT: BATTERY INFORMATION

Please retain this information for future reference.

Batteries should be placed by an adult.



CAUTION:

1. Always follow the instructions carefully. Use only the batteries specified and be sure to insert them correctly by matching the + and – polarity markings.
2. Do not mix old batteries and new batteries or standard (carbon-zinc) with alkaline batteries.
3. Remove exhausted or dad batteries from the product.
4. Remove batteries if product is not to be played with for a long time.
5. Do not short circuit the supply terminals.
6. Should this product cause, or be affected by, local electrical interference, move it away from other electrical equipment. Reset (switching off and back on again or removing and re-inserting batteries) if necessary.
7. RECHARGEABLE BATTERIES: Do not mix these with any other types of battery. Always remove from the product before recharging. Recharge batteries under adult supervision. DO NOT RECHARGE OTHER TYPES OF BATTERIES.
8. As with all small items, these batteries should be kept away from children. If swallowed, seek medical attention immediately.

CREATE A DELICIOUS BIRTHDAY CAKE WITH A MUSICAL TWIST!

Bake a Cake

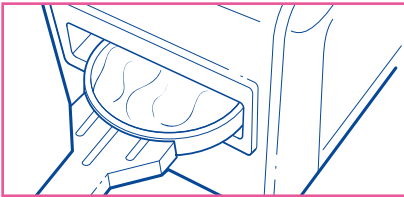
- Preheat your EASY-BAKE Oven for 15 minutes.
- Spray baking pan with non-stick cooking spray.



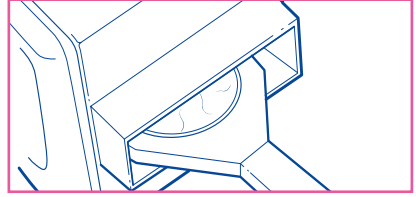
1. Pour contents of cake mix packet into mixing bowl. Add 3 teaspoons of water and mix with a spoon until smooth.



2. Slowly pour batter into the baking pan and spread evenly.



3. Use the pan pusher to insert pan into Oven. Be sure to insert pan far enough so that metal door closes. Bake in Oven for 10-12 minutes.

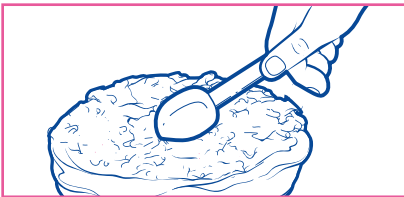


4. When baking time is complete, use other end of pan pusher to push baking pan all the way through to cooling chamber. Allow cake to cool in cooling chamber for 10-12 minutes, then carefully remove pan from oven with pan pusher. When cool, remove cake from the pan.

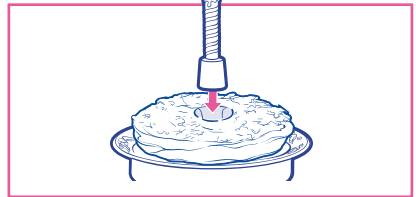
Make Frosting

1. Pour contents of frosting mix packet into mixing bowl. Add 1/2 teaspoon of warm water, and stir thoroughly with spoon until smooth. (For thinner frosting, stir in droplets of water to desired consistency.)

Complete Your Creations!



1. With a spoon, spread frosting over cake. (Helpful hint: Wet spoon in a glass of water then spread frosting.)



2. TO PLAY THE "HAPPY BIRTHDAY" SONG: Place musical plate flat on table. Remove a dime-size hole in the center of the cake. Place the cake onto the plate so the center candle mount is visible through the hole in the cake. Insert the end of the candle onto the center candle mount to start "Happy Birthday"!

Eat and enjoy!



If you have any questions, comments, or need additional information concerning this product or its parts, please call our Hasbro Consumer Affairs hotline at 1-800-327-8264, Monday through Friday during business hours (Eastern Time).

Look for all the EASY-BAKE brand food mixes and accessories!

***• My Little Pony™
Sugar Cookies Bake Set***

***• SCOOPY-DOO™
Cocoa Cake Bake Set***

FCC STATEMENT

This equipment has been tested and found to comply with the limits for a Class B digital device, pursuant to part 15 of the FCC Rules. These limits are designed to provide reasonable protection against harmful interference in a residential installation. This equipment generates, uses and can radiate radio frequency energy, and, if not installed and used in accordance with the instructions, may cause harmful interference to radio communications. However, there is no guarantee that interference will not occur in a particular installation. If this equipment does cause harmful interference to radio or television reception, which can be determined by turning the equipment off and on, the user is encouraged to try to correct the interference by one or more of the following measures:

- Reorient or relocate the receiving antenna.
- Increase the separation between the equipment and the receiver.
- Consult the dealer or an experienced radio/TV technician for help.