



**TIGER**  
ELECTRONICS, LTD.  
Model 65-131  
Ages 7 & up

# Millipede®

## INSTRUCTION

651310001IWTIE-01

### SOMETHING'S WAITING FOR YOU. AND IT'S HUNGRY.

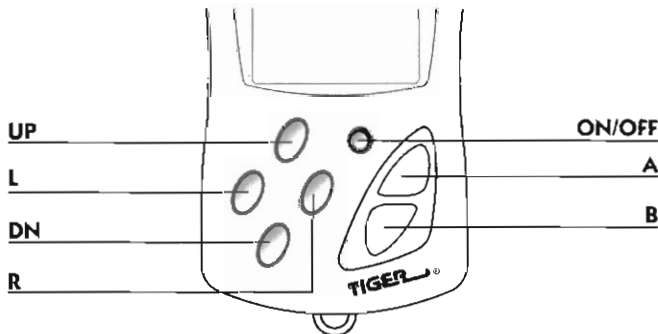
Deep in a mystical forest, you are fighting for your life but not against any human enemy. This is a fight against dangerous bugs. The most deadly of these is the Giant Millipede that will take your life with just one bite. The only thing you can use against these insidious insects is a magical Bow and Arrow. Blast the bugs with an arrow — and they will be exterminated!

### RIDE THE "WAVES" TO WIN

Destroy all the Millipedes in each "wave." As the Millipede appears on screen, you will realize that it has more than one section for you to destroy. In order for you to completely destroy a Millipede, you must hit EACH ONE OF THE SECTIONS with a magical arrow. The Millipede will move quicker as its sections are destroyed and will do more turning! You WIN the game if you survive 99 waves of Millipede attack!

### KEY TO GAME

Mastering your keypad is the key to this Extreme Keychain game!



- ON/OFF** — to turn on the game.  
— to turn off the game.
- UP** — to turn on the sound between waves.  
— to move up.
- DN** — to turn off the sound between waves  
— to move down
- L** — to move left
- R** — to move right.
- A** — to start the game  
— to start each new wave.  
— to fire magical arrows  
— to shoot a POW.
- B (same functions as button "A")** — to start the game  
— to start each new wave  
— to fire magical arrows  
— to shoot a POW
- RESET** — to reset the unit if your game malfunctions  
(RESET button is on the back of the game unit)

### HOW TO PLAY

Press the **ON/OFF** button to turn on the game. You'll hear an "ON" beep. The high score attained is displayed

To begin play, press either the "A" or "B" button



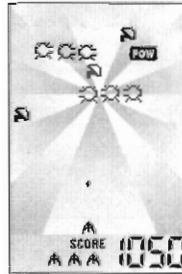
DON'T LOOK NOW, BUT A MILLIPEDE IS COMING DOWN THE SCREEN AT YOU!

Your objective is clear: Destroy the Millipedes before they twist and turn and reach the bottom of the screen and bite you! Destroy all the Millipedes in each wave.

Use your keypad to help you,

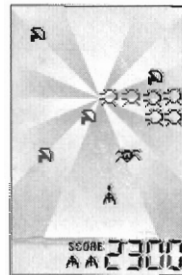
- Use "L" to move left
- Use "R" to move right
- Use "UP" to move up
- Use "DN" to move down
- Use the "A" or "B" button to begin each new wave and to fire your magical arrows and to shoot a POW

The Millipede is not going to stand still and wait for you! It's going to be turning and twisting, making it harder for you to shoot it as it moves down the screen. Making things even more difficult for you, as soon as you hit a section of the Millipede, it SPLITS — and forms ADDITIONAL MILLIPEDES! The Millipedes also move faster as their sections are destroyed!



THERE'S GOOD NEWS AND BAD NEWS. THE GOOD NEWS — NICE HIT! THE BAD NEWS — WHEN YOU HIT A SECTION OF MILLIPEDE, IT SPLITS INTO SEPARATE MILLIPEDES!

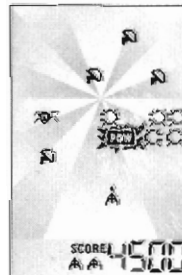
Also watch out for spiders! They'll wiggle. They'll jiggle. They'll bite you and you will lose a chance!



MILLIPEDES TAKE THEIR TIME TWISTING AND TURNING BUT SPIDERS RUN RIGHT FOR YOU!

Find the DDT bomb! The letters "POW" are written in the middle of it

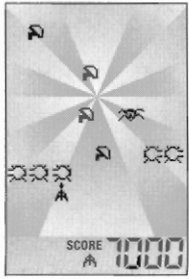
Blast it with an arrow! It will cause an explosion of Insecticide — and destroy any insects near it! This is a very effective shooting strategy when a Millipede is about to touch the bomb. You are only given a very limited number of "POW's", so be sure to use them wisely! Only fire at the POW, when the Millipede is close by!



POW! EXPLODE THE DDT BOMB WHEN A MILLIPEDE IS ABOUT TO TOUCH IT!

Also shoot down the mushrooms to slow down the Millipede! You've got to kill the Millipede stone dead. If there is even one section of Millipede left on screen, and you fire and miss it, it will begin multiplying!

Each time you're "BIT" by the Millipede or a spider, you will lose a chance. Lose all 3 chances on any wave and it's GAME OVER.



BITE MAKES RIGHT. GET BIT THREE TIMES — AND YOU'RE HISTORY.

When you kill off all the Millipedes on screen, the wave is complete and the game will pause.

Press the START button to begin the next wave. As you advance through the waves, the speed of the insects will increase. You WIN the game if you can complete all 99 waves.

After you win the game or after a GAME OVER, press the "A" or "B" button to begin a new game.

## SCORING

10 points for each section of a Millipede you hit and for each mushroom you hit

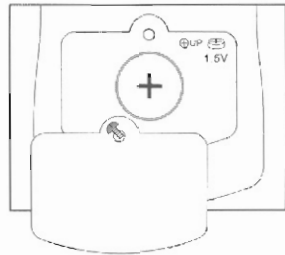
20 points for each spider you hit.

## INSERTING THE BATTERIES

To insert the batteries, have an adult open the battery compartment cover at the back of the game. (Remove the screw holding the battery door onto the back of the game unit and remove the door.) Insert 1xG13A OR LR44 battery or equivalent (battery included) as shown.

### TO ENSURE PROPER FUNCTION :

- BATTERY INSTALLATION SHOULD BE DONE BY AN ADULT.
- NON-RECHARGEABLE BATTERIES ARE NOT TO BE RECHARGED.
- RECHARGEABLE BATTERIES ARE TO BE REMOVED FROM THE TOY BEFORE BEING CHARGED (IF REMOVABLE).
- RECHARGEABLE BATTERIES ARE ONLY TO BE CHARGED UNDER ADULT SUPERVISION (IF REMOVABLE)
- ONLY BATTERIES OF THE SAME OR EQUIVALENT TYPE AS RECOMMENDED ARE TO BE USED.
- BATTERIES ARE TO BE INSERTED WITH THE CORRECT POLARITY
- EXHAUSTED BATTERIES ARE TO BE REMOVED FROM THE TOY
- THE SUPPLY TERMINALS ARE NOT TO BE SHORT-CIRCUITED.



If a part of your MILLIPEDE KEYCHAIN is damaged or something has been left out, DO NOT RETURN THE GAME TO THE STORE. The store doesn't have replacement parts. Instead, write to us at:

Tiger Electronics, Ltd Repair Center  
980 Woodlands Parkway, Vernon Hills,  
Illinois 60061, U S A

Please include a note with your return explaining the problem along with a sales slip, date, place of purchase and price paid. We will do our best to expedite your return promptly.

## 90-DAY LIMITED WARRANTY

Tiger Electronics, Ltd. (Tiger) warrants to the original consumer purchaser of this product that the product will be free from defects in materials or workmanship for 90 days from the date of original purchase. This warranty does not cover damages resulting from accident, negligence, improper service or use or other causes not arising out of defects in materials or workmanship.

During this 90-day warranty period, the product will either be repaired or replaced (at Tiger's option) without charge to the purchaser, when returned with proof of the date of purchase to either the dealer or to Tiger.

Product returned to Tiger without proof of the date of purchase or after the 90-day warranty period has expired, but prior to one year from the original date of purchase, will be repaired or replaced (at Tiger's option) for a service fee of U.S.\$6.00. Payments must be by check or money order payable to Tiger Electronics, Ltd.

**The foregoing states the purchaser's sole and exclusive remedy for any breach of warranty with respect to the product.**

All product returned must be shipped prepaid and insured for loss or damage to:

Tiger Electronics, Ltd Repair Dept  
980 Woodlands Parkway  
Vernon Hills, Illinois 60061, U S A.

The product should be carefully packed in the original box or other packing materials sufficient to avoid damage during shipment. Include a complete written description of the defect, a check if product is beyond the 90-day warranty period, and your printed name, address and telephone number.

**THIS WARRANTY IS IN LIEU OF ALL OTHER WARRANTIES AND NO OTHER REPRESENTATIONS OR CLAIMS OF ANY NATURE SHALL BE BINDING ON OR OBLIGATE TIGER IN ANY WAY. ANY IMPLIED WARRANTIES APPLICABLE TO THIS PRODUCT, INCLUDING WARRANTIES OF MERCHANTABILITY AND FITNESS FOR A PARTICULAR PURPOSE, ARE LIMITED TO THE NINETY (90) DAY PERIOD DESCRIBED ABOVE. IN NO EVENT WILL TIGER BE LIABLE FOR ANY SPECIAL, INCIDENTAL, OR CONSEQUENTIAL DAMAGES RESULTING FROM POSSESSION, USE, OR MALFUNCTION OF THIS TIGER PRODUCT.**

Some states do not allow limitations as to how long an implied warranty lasts and/or exclusions or limitations of incidental or consequential damages, so the above limitations and/or exclusions of liability may not apply to you. This warranty gives you specific rights, and you may also have other rights which vary from state to state.

For more information about Tiger Electronics, our products and special promotions, please visit our Web Site at: [www.tigertoys.com](http://www.tigertoys.com)

## CAUTION/DEFECT OR DAMAGE

### CAUTION



High temperature will destroy the unit. Do not leave unit in direct sunlight.



Do not use a pencil or pin to press the RESET switch. Use a ball-point pen.



Do not press the liquid crystal display and avoid heavy shock or the display may fail.



Clean only with a piece of soft dry cloth.

Replace batteries at the first sign of erratic operation

Millipede® © Atari/JTS Corporation All Rights Reserved. Millipede is a registered trademark of Atari/JTS Corporation. Licensed from Atari/JTS Corporation.

**TIGER**  
ELECTRONICS, LTD.

©, TM, & © 1998 Tiger Electronics, Ltd. All rights reserved.  
980 Woodlands Parkway, Vernon Hills, Illinois 60061, U S A

©, TM, & © 1998 Tiger Electronics UK Ltd  
All rights reserved.  
Belvedere House, Victoria Avenue,  
Harrogate, North Yorkshire HG1 1EL, England  
[www.tigertoys.com](http://www.tigertoys.com)

PRINTED IN CHINA