

AGES 4+
72960 Asst.

FurReal
friends

Perky
Kitty™

INSTRUCTION
MANUAL



Product and colors may vary.
© 2005 Hasbro. All Rights Reserved.
TM & © denote U.S. Trademarks.

Patents Pending.

72960 Asst.

P/N 6466760100

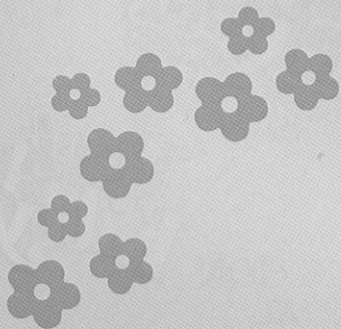
TIGER
ELECTRONICS

TIGERTOYS.COM 
For new products and offers.

Questions? Call 1-800-327-8264



Loveable pets that “come alive!”



Thank you for purchasing the FURREAL FRIENDS PERKY KITTY toy. This cute and adorable kitty moves and sounds like a REAL kitty!

Requires 3 x 1.5V "AA" or LR6 size alkaline batteries (not included). Phillips/cross head screwdriver (not included) needed to insert batteries.

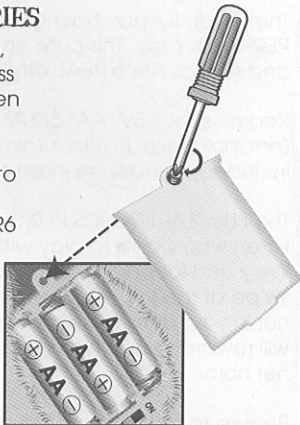
The FURREAL FRIENDS PERKY KITTY is the friendliest kitten who wants to play with you! She's always lively and looking around for fun. She'll swat and swipe at the toy YOU dangle in front of her! Cradle her in your arms while petting her back, and she will reward you with soft nuzzling and purring. Bring her home today!

Be sure to take good care of your FURREAL FRIENDS PERKY KITTY by following the instructions in this booklet!

To begin playing with your FURREAL FRIENDS PERKY KITTY, you must first install the batteries.

TO INSTALL BATTERIES

Pull back the plush flap, and using a Phillips/cross head screwdriver, loosen screw in battery compartment cover (screw stays attached to cover) on the bottom. Insert 3 x 1.5V "AA" or LR6 size alkaline batteries (not included). Replace cover and tighten screw.



! CAUTION: TO AVOID BATTERY LEAKAGE

1. Be sure to insert the batteries correctly and always follow the toy and battery manufacturers' instructions;
2. Do not mix old batteries and new batteries or alkaline, standard (carbon-zinc) or rechargeable (nickel-cadmium) batteries;
3. Always remove weak or dead batteries from the product.

IMPORTANT: BATTERY INFORMATION

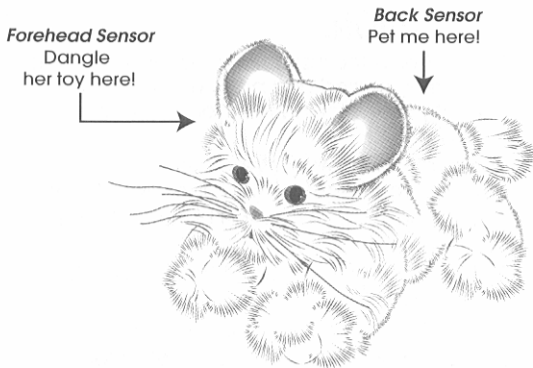
Please retain this information for future reference. Batteries should be replaced by an adult.

! CAUTION:

1. Always follow the instructions carefully. Use only batteries specified and be sure to insert item correctly by matching the + and - polarity markings.
2. Do not mix old batteries and new batteries or standard (carbon-zinc) with alkaline batteries.
3. Remove exhausted or dead batteries from the product.
4. Remove batteries if product is not to be played with for a long time.
5. Do not short circuit the supply terminals.
6. Should this product cause, or be affected by, local electrical interference, move it away from other electrical equipment. Reset (switching off and back on again or removing and re-inserting batteries) if necessary.
7. RECHARGEABLE BATTERIES: Do not mix these with any other types of batteries. Always remove from the product before recharging. Recharge batteries under adult supervision. **DO NOT RECHARGE OTHER TYPES OF BATTERIES.**

GETTING STARTED

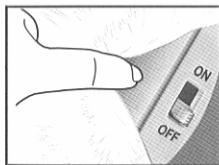
Your FURREAL FRIENDS PERKY KITTY consists of the following parts:



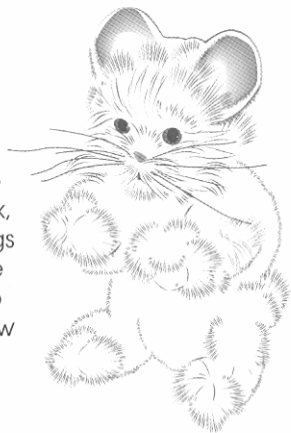
Your PERKY KITTY makes a variety of realistic meowing and purring sounds to let you know when she is happy, playful, sleepy, or needs some love and attention!

HOW TO PLAY WITH YOUR PERKY KITTY

To turn your PERKY KITTY **ON**, pull back the plush flap over the battery door and switch the **ON/OFF** switch to **ON**. Then replace the flap.



She loves to be up, alert and ready to play! To pose her up simply hold her back, keeping her hind legs pressed firmly on the ground and raise up her upper body! Now she's ready to play!



Dangle her toy in front of her face (forehead) and watch her bat at it! She even tries to catch it!



When she's tired of playing and wants to be cuddled in your arms, simply lay her down in your lap and pet her back. She'll purr and meow softly while nuzzling into you.



Note: Please remember to turn the **ON/OFF** switch to the **OFF** position if she will not be played with for a while, to conserve battery life.

Your kitty is like a real kitty in many ways. Show her lots of love and affection to keep her happy!

CLEANING INSTRUCTIONS

To clean your kitty's fur, gently brush her with a cloth or soft brush to loosen any dirt. Then use a slightly damp cloth to remove stains.

- DO NOT PUT IN THE WASHING MACHINE
- DO NOT SUBMERGE IN WATER
- DO NOT GET WET EXCEPT A DAMP CLOTH ON THE FUR
- TO PREVENT STAINING THE FUR, WIPE DIRT OFF IMMEDIATELY
- IF THE KITTY GETS WET, REMOVE THE BATTERIES AND DRY THE FUR
- ONCE COMPLETELY DRY, REPLACE THE BATTERIES
- DO NOT USE DETERGENT OR STAIN REMOVERS ON THE FUR



High temperature will destroy the unit. Do not leave unit in direct sunlight.



Clean only with a piece of soft dry cloth.

- Prevent spills of food and beverage on the unit.
- Do not throw or kick the product, and do not push sharp objects through the speaker openings.

FCC STATEMENT

This device complies with part 15 of the FCC Rules. Operation is subject to the following two conditions: (1) This device may not cause harmful interference, and (2) this device must accept any interference received, including interference that may cause undesired operation.

This equipment has been tested and found to comply with the limits for a Class B digital device, pursuant to Part 15 of the FCC Rules. These limits are designed to provide reasonable protection against harmful interference in a residential installation. This equipment generates, uses and can radiate radio frequency energy, and, if not installed and used in accordance with the instructions, may cause harmful interference to radio communications. However, there is no guarantee that interference will not occur in a particular installation. If this equipment does cause harmful interference to radio or television reception, which can be determined by turning the equipment off and on, the user is encouraged to try to correct the interference by one or more of the following measures:

- Reorient or relocate the receiving antenna.
- Increase the separation between the equipment and the receiver.
- Consult the dealer or an experienced radio/TV technician for help.