

ELECTRONIC LCD VIDEO GAME**1 THE HARLEY-DAVIDSON® STORY**

Isn't it time you drove a Harley? Now you can! You're at the controls of the "King of the Highway", the FLHTC with Ultra Classic Electra Glide!

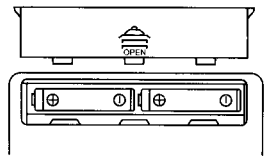
"Live to ride and ride to live" is your motto. But the riding is quite a challenge when you encounter pot holes in the pavement, overgrown palm trees in the middle of dirt trail, other riders riding too close to you, oil slicks, "Sunday drivers" in their automobiles driving way too slow for conditions, deer that run across the highway, and abandoned car mufflers in the road! (If they'd have been riding a motorcycle, they would never have lost their muffler!)

2 INSERTING THE BATTERIES

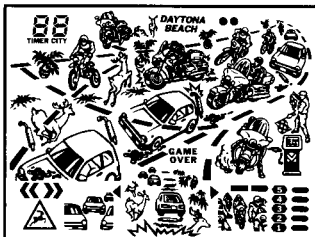
To insert the batteries, remove the battery compartment cover at the back of the game. (To remove cover, push in direction of the arrow.)

Insert two "AA" batteries, UM-3 or equivalent (not included), making sure to align "+" and "-" as shown.

Do not use rechargeable batteries.



After battery insertion, the ACL switch may be pushed only if the game doesn't work properly. (Use a ball-point pen.) The display should appear as in the diagram below.



3 CAUTION



High temperature will destroy the unit. Do not leave unit in direct sunlight.



Do not press the liquid crystal display and avoid heavy shock or the display may fall.



Do not use a pencil or pin to press the ACL switch. Use a ball-point pen.



Clean only with a piece of soft dry cloth.

Replace batteries at the first sign of erratic operation.

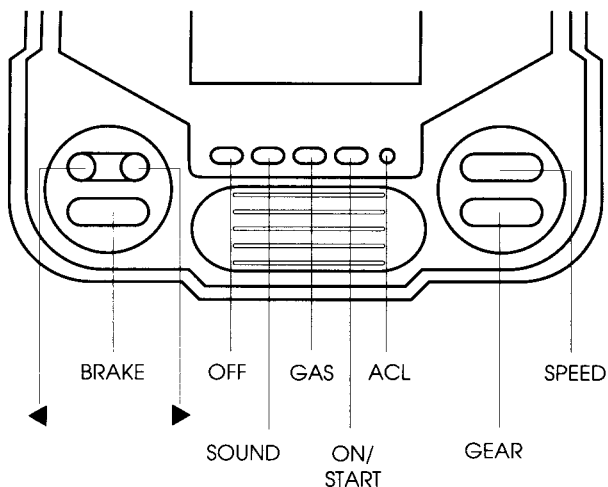
4 THE OBJECT OF THE GAME

The objective of the game is to drive cross-country and reach Daytona Beach, where about a million fellow bikers meet every year for the Harley-Davidson parade of bikes!

But it's a long drive. You have to pass through 20 stages and 99 cities to reach Daytona Beach! Each stage has five cities—except the final stage, which has 4 cities!

You WIN the game if you can drive through all 20 stages and 99 cities and reach Daytona Beach within the given time limits!

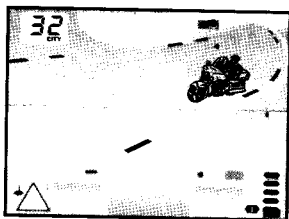
5 CONTROL GUIDE



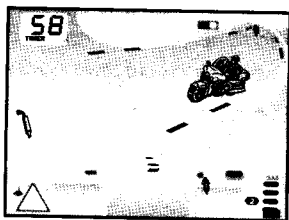
- ON/START —to turn on the unit.
—to start the game.
—to start from each new city.
- GAS —to fill up your gas tank once you pull into a gas station
and the speed is decreased down to GEAR 0.
- SOUND —to control sound: on or off.
- OFF —to turn off the unit.
- SPEED —to go faster.
- BRAKE —to brake.
- GEAR —to shift from gears 0 (lowest) to 5 (highest).
- ▶ —to steer right.
- ◀ —to steer left.

6 FEATURES

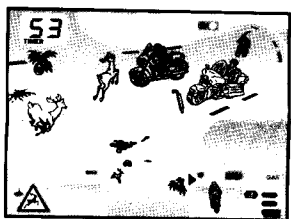
- drive your own Harley-Davidson motorcycle
- 20 stages
- 99 cities to visit
- 6 gears
- "starter" signal
- windshield
- rear view mirror
- timer
- gas level
- built-in melody
- sound on/off control
- high score retained
- built-in automatic power-off timer



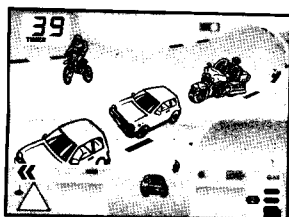
Start your Harley-Davidson and drive across 99 cliffs to reach Daytona Beach! Start your engine when you see the "starter" signal light up! Keep an eye on your rear view mirror to see what is coming up behind you!



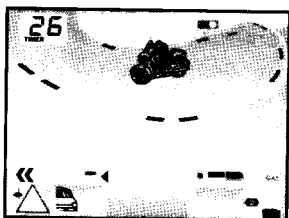
You will encounter different obstacles as you drive. You'll lose time when you crash into an obstacle. You must complete each stage before the timer drops to zero! Keep an eye on your windshield to see obstacles approaching! Speed up to full power before shifting up to the next gear in order to increase your speed capacity!



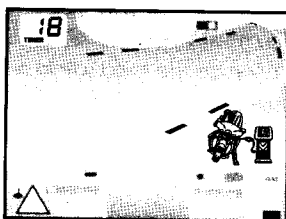
Try to steer clear of obstacles along the way by carefully watching the action through your rear view mirrors, your windshield, and the caution signals (such as the "Deer Crossing Ahead" sign) that appear on screen! Obstacles include deer crossing the road, overgrown palm trees, oil slicks, and abandoned mufflers!



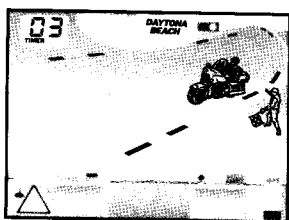
Also steer clear of "Sunday drivers" in their automobiles driving too slow for conditions!



Harleys are also affectionately called "hogs". The faster you go, the harder it will be to steer your "hog"!



You also have to watch your gas level carefully. Refuel your gas tank once you pull into a gas station. The game is over if you ever run out of gas!



You WIN THE GAME by reaching Daytona Beach!

The ACL switch may be pushed if the game isn't working properly. (Use a ball-point pen).

Press the ON/START button to turn on the unit. You'll hear an "On" beep and your highest score attained will be displayed.

Press the ON/START button again to start the game from stage 1! "1" is displayed on screen!

You are riding on your FLHTC Harley-Davidson motorcycle with Ultra Classic Electra Glide! You are on your way to Daytona Beach where about a million bikers meet every year for the Harley-Davidson parade of bikes!

It's a long drive. There are 20 stages, with 5 cities in each stage until you reach the final stage. In the final stage, there are only four cities, a total of cities in all to reach Daytona Beach!

There is a TIME LIMIT for each stage. You must complete each stage before the timer drops to zero or the game is over. You lose valuable time whenever you crash into an obstacle!

The timer is regularly displayed so that you can see how much time remains! When you complete a city, the next city number is shown.

You WIN the game if you can complete all 20 stages and drive through all 99 cities and reach Daytona Beach within the given time limits!

Use your control panel to help you:

PRESS ON/START

- to turn on the unit.
- to start the game.
- to start from each new city.

PRESS GAS

- to fill up your gas tank once you pull into a gas station and the speed is decreased down to gear 0 (stop).

PRESS SPEED

—to go faster.

PRESS BRAKE

—to brake.

PRESS GEAR

—to shift from gears 0 (lowest) to 5 (highest).

PRESS "▶"

—to steer right.

PRESS "◀"

—to steer left.

There are many OBSTACLES along the road, including:

- POT HOLES IN THE PAVEMENT
- OVERGROWN PALM TREES IN THE MIDDLE OF DIRT TRAILS
- OTHER RIDERS RIDING TOO CLOSE TO YOU
- OIL SLICKS
- "SUNDAY DRIVERS" IN AUTOMOBILES DRIVING WAY TOO SLOW
- DEER THAT RUN ACROSS THE ROAD
- ABANDONED CAR MUFFLERS

You must WATCH YOUR GAS LEVEL carefully. There is at least one gas station on the road within each stage. Remember, if you run out of gas, the GAME IS OVER!

When you reach a gas station, press the BRAKE button to stop inside it. To refuel, press the GAS button and your gas tank will count up to full! After refilling, you will automatically be placed back on the road!

In addition to steering onto left and right, you can also use your BRAKE to stop. You press SPEED to go faster and press GEAR to shift from 0 (the lowest gear) to 5 (the highest gear).

The higher your gear shift, the higher your SPEED CAPACITY.

The lower your gear shift, the lower your speed capacity.

So "shift up" to increase speed capacity! However, the faster you go, the harder it will be to steer your "hog". (Remember that Harley riders call their motorcycles "hogs!").

The game pauses as you complete each stage and the next stage number appears on screen as the next city awaits you! Press the ON/START button to start the next leg of your cross country journey when you are ready!

Press the SOUND button to travel in silence. Press it again to regain all the sounds of the open road!

Press the OFF button to turn off the game when you're finished playing. But don't worry if you forget because you're driving quite a machine—it automatically shuts itself off after about 3 minutes of no action!

So, crank up your engine and feel the breeze against your face as you hit the open road! Next stop, Daytona!

9 DEFECT OR DAMAGE

If a part of your game is damaged or something has been left out, DO NOT RETURN THE GAME TO THE STORE. The store doesn't have replacement parts. Instead, write to us at:

TIGER ELECTRONIC TOYS REPAIR CENTER
980 Woodlands Parkway,
Vernon Hills, Illinois 60061, U.S.A.

In your note, mention the name of your game, the game's model number, and tell us briefly what the problem is. Also include sales slip, date and place of purchase and price paid. We will do our best to help.

10 90-DAY LIMITED WARRANTY

Tiger Electronic Toys warrants to the original consumer purchaser of any of its electronic games that the product will be free of defects in material or workmanship for 90 days from date of purchase.

During this 90-day warranty period the game will either be repaired or it will be replaced (at our option) without charge to the purchaser, when returned either to the dealer with proof of the date of purchase, or when returned prepaid and insured with proof of date of purchase, to Tiger Electronic Toys, 980 Woodlands Parkway, Vernon Hills, Illinois 60061, USA.

Units returned without proof of the date of purchase, or units returned after the 90-day warranty period has expired, will be repaired or replaced (at our option) for a service charge of US\$12.00. Payment must be made by check or money order. This non-warranty service will only be available for one year from the date of purchase. All non-warranty units must be returned postage paid and insured to TIGER ELECTRONIC TOYS, REPAIR CENTER, 980 WOODLANDS PARKWAY, VERNON HILLS, ILLINOIS 60061, USA.

Tiger Electronic Toys will not be liable for loss of use of the product or other incidental or consequential costs, expenses, or damages incurred by the purchaser. Any implied warranties are limited in duration to the 90-day period from the original date of purchase.

This warranty gives you specific legal rights and you may also have other rights which vary from state to state so the foregoing limitations may not apply to you. This warranty does not cover damage resulting from accident, unreasonable use, negligence, improper service or other causes not arising out of defects in material or workmanship.

HOW TO RECEIVE SERVICE FROM THE TIGER ELECTRONIC TOYS REPAIR CENTER FOR YOUR ELECTRONIC GAME DURING AND AFTER THE 90-DAY WARRANTY PERIOD. During the 90-day warranty period, you may have a defective game replaced at the dealer from which it was purchased. If, however, during the 90-day warranty period, you choose to obtain repair or replacement from the Tiger Electronic Toys Repair Center, please make the arrangements described below:

- 1) Pack the game carefully in the original box. If the game box is not available, use a sturdy carton with plenty of newspaper, foam or other padding and tie it securely.
- 2) Carefully print on the box or carton the following name and address
TIGER ELECTRONIC TOYS,
REPAIR CENTER
980 Woodlands Parkway,
Vernon Hills, Illinois 60061, USA.
Also, don't forget to show your return address.
- 3) Put parcel post stamps on the package; insure the package, then mail.

After the 90-day warranty period and up to one year from the date of purchase, do all of the above PLUS enclose your check or money order for US\$12.00 payment for the repair service.