



AGES 5+

73568/73567 ASSY.

PERSONAL  
PLAYER

 **WARNING:**  
CHOKING HAZARD-Small parts.  
Not for children under 3 years.

Thank you for purchasing the HITCLIPS Personal Player – it’s the stylish way to play today’s hottest music! Designed with advanced Micro Music Discs now you get even more music with better sound!

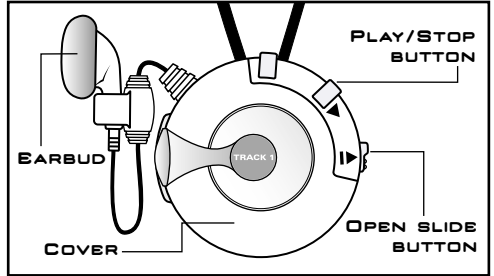
Be sure to read and follow all instructions carefully before using this product.

## INSTRUCTIONS

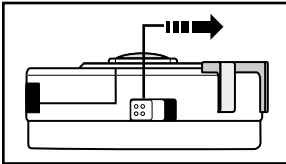
### This HITCLIPS Personal Player package includes:

- 1 Personal Player
- 1 Micro Music Disc
- 1 Micro Music Disc Case
- 1 Earbud (attached)
- 1 Wrist Strap/Necklace or Keychain Clip Accessory

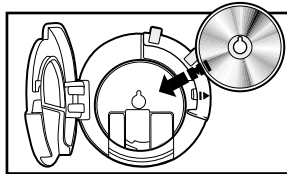
Includes 1 x 3.0V “CR2032” lithium battery. Phillips/cross head screwdriver (not included) needed to replace battery.



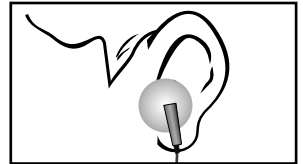
## TO PLAY



1. Slide the “Open” button to open the cover of your Personal Player.



2. Insert a Micro Music Disc, as you would a standard compact disc. Make sure that it is positioned correctly on the center spindle. Gently close the cover of your player until you hear a click.

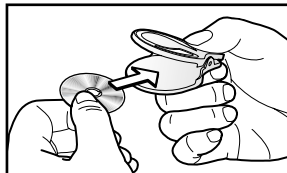


3. Carefully place the earbud into your ear.  
4. Press the “Play/Stop” button to begin playing your music.

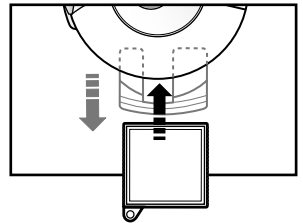
5. To listen to the song multiple times, press and hold down the “Play/Stop” button for approximately two seconds, until you hear a beep, and the song will repeat itself three times.

NOTE: Only Micro Music Discs will repeat a song three times.

6. To stop your music, simply press the “Play/Stop” button.



NOTE: To better protect your Micro Music Discs, please use the provided case for storage. Simply squeeze the back of the case to open. Slide your Micro Music Disc in and let go. The case will close upon your release.

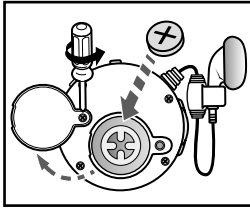


If using the Micro Music Clip, make sure the cover is in the “Closed” position, and remove the “block” piece. Then, slide Clip into your Personal Player.

NOTE: The HITCLIPS Personal Player works ONLY with HITCLIPS Micro Music Discs or Micro Music Clips.

## TO REPLACE BATTERIES

Use a Phillips/cross head screwdriver to loosen screws in battery compartment door (screws remains attached to door).  
Insert 1 x 3.0V CR2032 lithium battery. Replace door and tighten screws.



### CAUTION:

1. As with all small batteries, the battery used with this toy should be kept away from small children who still put things in their mouths. If it is swallowed, promptly see a doctor and, in the U.S., have the doctor phone (202) 625-3333 collect, or, in Canada, have the doctor call your provincial Poison Control Centre.
2. Make sure the battery is inserted correctly and always follow the toy and battery manufacturers' instructions;
3. Do not mix old batteries and new batteries or alkaline, standard (carbon zinc) or rechargeable (nickel-cadmium) batteries.

### IMPORTANT: BATTERY INFORMATION

Please retain this information for future reference. Batteries should be replaced by an adult.

### CAUTION:

1. Always follow the instructions carefully. Use only batteries specified and be sure to insert item correctly by matching the + and - polarity markings.
2. Do not mix old batteries and new batteries or standard (carbon-zinc) with alkaline batteries.
3. Remove exhausted or dead batteries from the product.
4. Remove batteries if product is not to be played with for a long time.
5. Do not short-circuit the supply terminals.

6. Should this product cause, or be affected by, local electrical interference, move it away from other electrical equipment. Reset (switching off and back on again or removing and re-inserting batteries) if necessary.
7. **RECHARGEABLE BATTERIES:** Do not mix these with any other types of battery. Always remove from the product before recharging. Recharge batteries under adult supervision. **DO NOT RECHARGE OTHER TYPES OF BATTERIES.**
8. As with all small items, these batteries should be kept away from children. If swallowed, seek medical attention immediately.


### FCC STATEMENT

This device complies with Part 15 of the FCC Rules. Operation is subject to the following two conditions:

- (1) This device may not cause harmful interference, and
- (2) This device must accept any interference received, including interference that may cause undesired operation.

This equipment has been tested and found to comply with the limits for a Class B digital device, pursuant to Part 15 of the FCC Rules. These limits are designed to provide reasonable protection against harmful interference in a residential installation. This equipment generates, uses and can radiate radio frequency energy and, if not installed and used in accordance with the instructions, may cause harmful interference to radio communications. However, there is no guarantee that interference will not occur in a particular installation. If this equipment does cause harmful interference to radio or television reception, which can be determined by turning the equipment off and on, the user is encouraged to try to correct the interference by one or more of the following measures:

- Reorient or relocate the receiving antenna.
- Increase the separation between the equipment and receiver.
- Consult the dealer or an experienced radio/TV technician for help.

 Not suitable for children under 3 years because of small parts - choking hazard.

  
Questions? Call: 1-800-327-8264

**TIGER**  
ELECTRONICS  
Where Technology Comes to Play!™



© 2003 Hasbro. All Rights Reserved.  
® denotes Reg. U.S. Pat. & TM Office.  
Patents Pending  
73568/73567 Asst. PN 630516000