



OVER 12 months

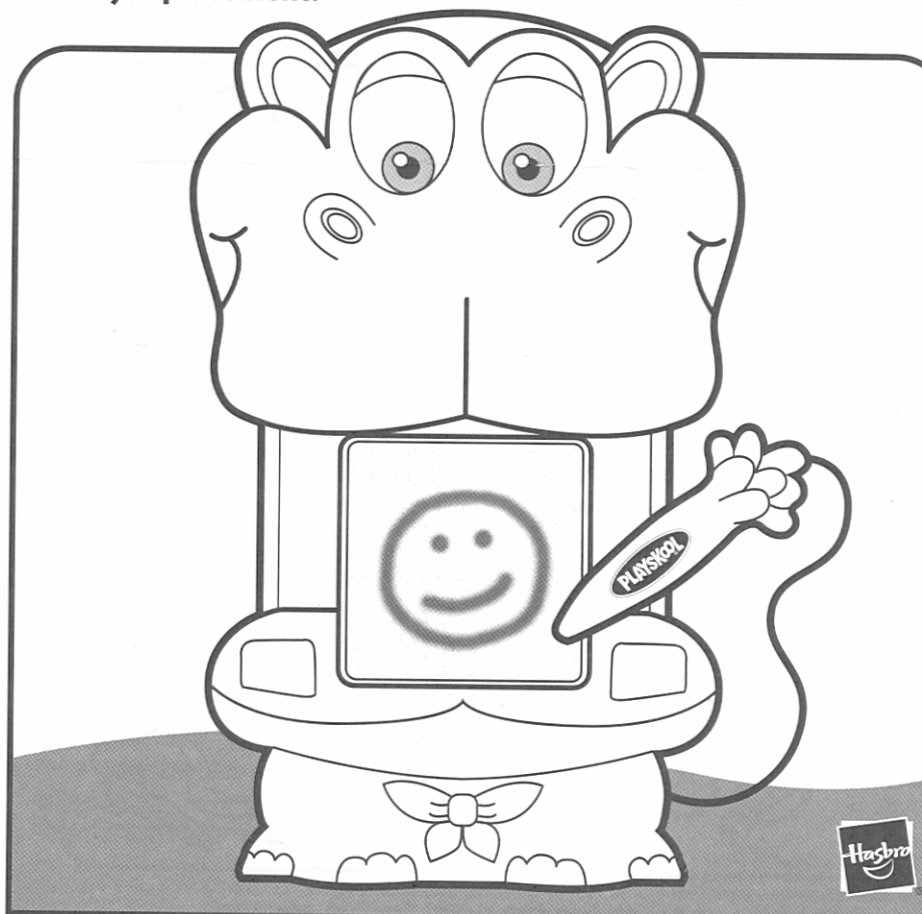
03

Hungry
Hungry
Hippos
Doodle 'n Munch™

Thank you for choosing this PLAYSKOOL product!

Includes 3 x 1.5V A76/LR44 batteries.

Phillips/crosshead screwdriver (not included) needed for battery replacement.



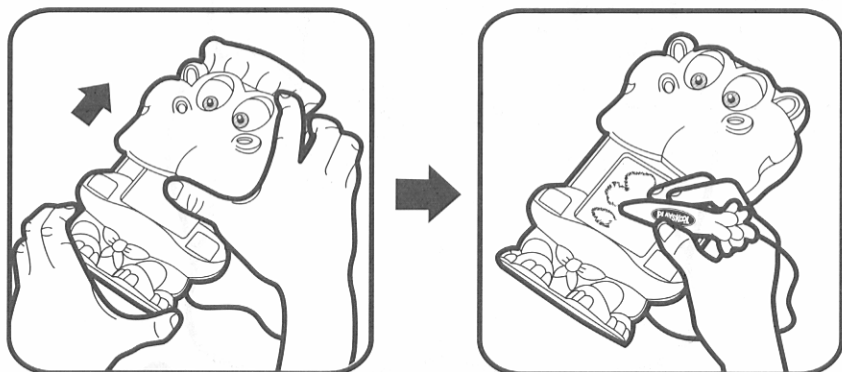
IMPORTANT:

- Before first time use, darken the writing screen completely, using the easy-grasp pen. Then, open and close the hippo's mouth to clear the screen. Repeat this several times. This will allow you to create the clearest, darkest images on the screen.
- Contents may stain fabric. Remove from skin with soapy water.
- Do not place product near open flames, heaters, radiators, ovens and other heat sources.
- To prevent damage to the screen, do not use excessive force when drawing with pen. Do not use anything other than the attached pen when drawing on screen. Keep sharp objects away from screen.

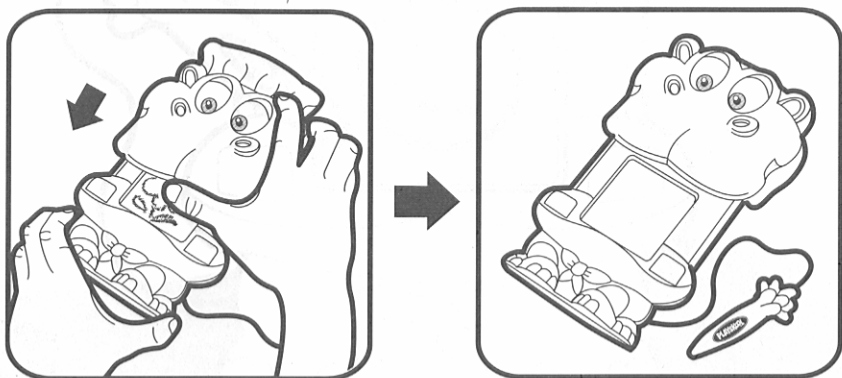
TO USE

This easy-to-use hippo friend offers sketching and scribbling fun and delightful electronic sounds!

- Open the hippo's mouth to write and draw on the screen with the attached pen!



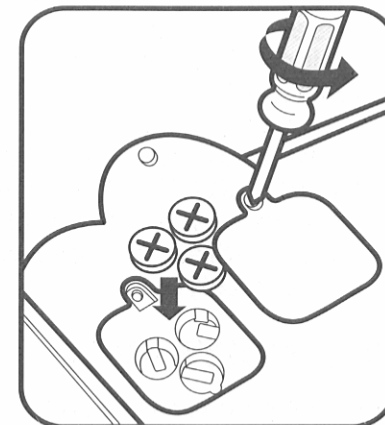
- Close the hippo's mouth to erase the screen!



- Press the hippo's tooth (on the right) for fun sounds!

TO REPLACE BATTERIES

Use a Phillips screwdriver (not included) to loosen screw in battery compartment door (screw remains attached to door). Remove door. Insert 3 fresh 1.5V A76/LR44 alkaline batteries. Replace door and tighten screw.



⚠ CAUTION:

1. As with all small batteries, the batteries used with this toy should be kept away from small children who still put things in their mouths. If they are swallowed, promptly see a doctor and, in the U.S., have the doctor phone (202) 625-3333 collect, or, in Canada, have the doctor call your provincial Poison Control Centre.
2. Make sure the batteries are inserted correctly and follow the toy and battery manufacturer's instructions.
3. Do not mix old and new batteries, alkaline, standard (carbon-zinc) or rechargeable (nickel-cadmium) batteries.

IMPORTANT: BATTERY INFORMATION

Please retain this information for future reference. Batteries should be replaced by an adult.

⚠ CAUTION:

1. Always follow the instructions carefully. Use only batteries specified and be sure to insert item correctly by matching the + and - polarity markings.
2. Do not mix old batteries and new batteries or standard (carbon-zinc) with alkaline batteries.
3. Remove exhausted or dead batteries from the product.
4. Remove batteries if product is not to be played with for a long time.
5. Do not short-circuit the supply terminals.

6. Should this product cause, or be affected by, local electrical interference, move it away from other electrical equipment. Reset (switching off and back on again or removing and re-inserting batteries) if necessary.
7. **RECHARGEABLE BATTERIES:** Do not mix these with any other types of battery. Always remove from the product before recharging. Recharge batteries under adult supervision. **DO NOT RECHARGE OTHER TYPES OF BATTERY.**
8. As with all small items, these batteries should be kept away from children. If swallowed, seek medical attention immediately.

FCC STATEMENT

This equipment has been tested and found to comply with the limits for a Class B digital device, pursuant to Part 15 of the FCC Rules. These limits are designed to provide reasonable protection against harmful interference in a residential installation. This equipment generates, uses and can radiate radio frequency energy, and, if not installed and used in accordance with the instructions, may cause harmful interference to radio communications. However, there is no guarantee that interference will not occur in a particular installation. If this equipment does cause harmful interference to radio or television reception, which can be determined by turning the equipment off and on, the user is encouraged to try to correct the interference by one or more of the following measures:

- Reorient or relocate the receiving antenna.
- Increase the separation between the equipment and the receiver.
- Consult the dealer or an experienced radio/TV technician for help.