

i-Cybie Sensors	Action
Sound Sensor	Detects Clap - center, right and left / <b>Action: Walk to Sound</b>
Wall Sensor	Detects Wall - center / <b>Action: Reverse and Turn</b> Detects Wall - right or left / <b>Action: Turn Opposite Way</b>
Motion Sensor	Detects motion up to 10' in a normally lighted room while in "Guard Mode" ONLY / <b>Action: Attack</b>
Voltage	Detects Low Battery Voltage <b>Action: "Charge Me" position</b>
Battery Door	Detects if Battery Door is Closed <b>Action: Opened Door suspends operation</b>
Tilt Sensor	Detects Tilt to left, right, forward, backwards <b>Action: Get Up</b>
Leg Encoder	<b>Keeps legs in correct position</b> Detects jamming of legs for timeout

### TRICK MODE

(Remember: \* = CLAP, / = PAUSE)

Clap Sequence	Trick Performed
**	Scratch Ear
***	Dance
****	Give a Paw
** / *	Beg
** / **	Pee
** / ***	Wag Tail
** / ****	Head Stand

### EXIT TRICK MODE:

- 1) Three claps, pause, two claps (\*\*\*/\*\*).
- 2) Time out after 30 seconds of no commands.
- 3) Press back switch long.

### OPERATING NOTE:

EXCLUSIVE USE of CLAP COMMANDS or VOICE COMMANDS (refer to Advanced Play Mode for selecting sound or voice).  
i-CYBIE WILL ECHO CLAP COMMANDS with a series of short barks.  
IF i-CYBIE DID NOT HEAR YOU he will shake his head "NO" and his eyes will both be RED.

### DEFAULT SETTINGS (can be changed in ADVANCED PLAY MODE):

1. Auto Listen Mode: **OFF**
2. Command Mode: **Clapping**
3. Dog Mood at start: **SAD**
4. Sound: **Enabled**
5. Floor IR Sensor: **Disabled**

### ADVANCED PLAY MODE

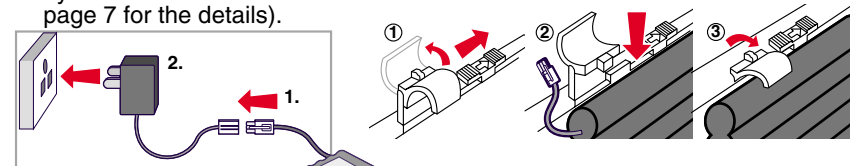
(Every Button Press MUST Be Followed By a BEEP)

Remote Code	Function
10, 1, Large Button	"Life of Cybie"
10, 2, Large Button	"i-Cybie the GREAT!"
10, 3, Large Button	"Walk About"
10, 4, Large Button	Mute On/Off
10, 5, Large Button	Enable Auto Listen
10, 6, Large Button	Disable Auto Listen
10, 7, Large Button	Using Voice Command
10, 8, Large Button	Using Sound Command
10, 9, Large Button, 9, Large Button	Clear all Trained words

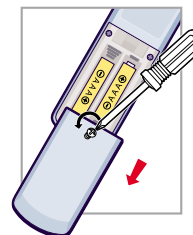
## i-Cybie Quick Start Owner's Guide

### TO START i-CYBIE:

- 1) Charge i-Cybie's battery for 4 hours (Battery charging should be done by an adult. See instruction manual page 7 for the details).
- 2) Install Remote Batteries.
- 3) Install Charged i-Cybie Battery.

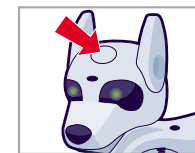


- 2) Install Remote Batteries.



- 4) Close Battery door.

- 5) Press Head Button after eyes become Green to Start.



### i-CYBIE SHOWS OFF! (fun tricks using the remote)

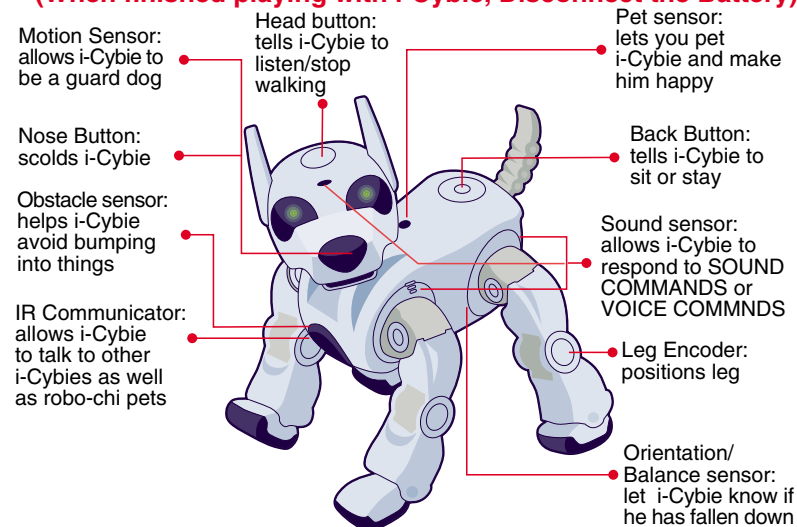
**Aim Remote at i-Cybie's chest, you must hear a beep after every key!**

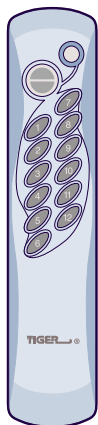
For the LIFE OF CYBIE DEMO press 10 , 1 , large button  
For the i-CYBIE THE GREAT! DEMO press 10 , 2 , large button  
For the WALKABOUT DEMO press 10 , 3 , large button

- COME TO CLAP: When i-Cybie is not busy moving or not in "Listen Mode", he will listen for your "COME TO CLAP" command. He will turn his head to the direction of the clap and WALK toward it. He can be "driven around" using this feature.

### i-CYBIE CONTROLS AND FUNCTIONS

(When finished playing with i-Cybie, Disconnect the Battery)





## Remote Buttons:

- 1 - BOW
- 2 - SIT DOWN
- 3 - HEAD SHAKE/GOOD BOY
- 4 - enter TRICK MODE
- 5 - PEE/BAD DOG
- 6 - WAG TAIL
- 7 - STAY
- 8 - enter GUARD MODE
- 9 - enter LISTEN MODE
- 10 - enter ADVANCED PLAY MODE
- 11 - enter TRAIN VOICE MODE
- 12 - EXIT MODE

Small Button - PAUSE (enter low power mode)

Large Button - STOP/ENTER

## i-CYBIE'S MOODS

i-Cybie has 4 moods that change with you and your environment. For example Press i-Cybie's head button 5 times and he is HAPPY, leave him alone and he becomes SAD. Challenge him with a complex room and he becomes HYPER. Alone in a dark room i-Cybie will go to SLEEP! i-Cybie shows these moods with eye color, face expressions, body positions and activities. The table below shows a summary of i-Cybie's moods, positions and eye patterns.

INTERACTION-PET,CLAP,TALK	ROOM NOISY, HARD TO MOVE
<p><b>Actions</b> Hug, Eat, Dance, Point Wave</p> <p><b>Appearance</b> Head up, Mouth open, Eyes Solid Green</p>	<p><b>Actions</b> Dig, Howl, Rub Bottom, Pee Walk Nervous</p> <p><b>Appearance</b> Head forward, Mouth closed Eyes Solid Red TAIL AT AN ANGLE</p>
<p><b>Actions</b> Scratch, Lick, Look Around,</p> <p><b>Appearance</b> Head tilted down, Mouth Closed Eyes Blink Green TAIL DOWN</p>	<p><b>Actions</b> Stretch, Yawn, Sleep</p> <p><b>Appearance</b> Head down, Mouth closed Dark eyes, Blink Green Occasionally TAIL DOWN</p>
<p><b>ROOM QUIET AND DARK</b></p>	<p><b>SICK</b></p> <p><b>Actions</b> Hurt paw, Worry</p> <p><b>Appearance</b> Head forward, Mouth closed One eye Red One eye Green</p>

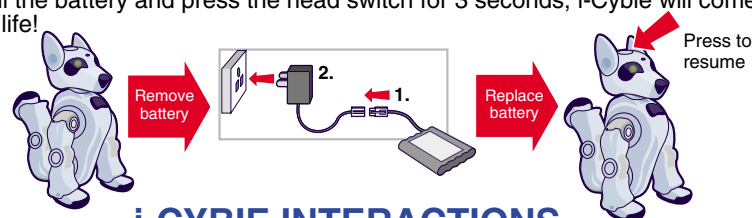
## i-CYBIE STRETCH

Since i-Cybie is a robot, from time to time the dog needs to do some simple internal checks to make sure everything is working OK. i-Cybie will do them automatically. If you see i-Cybie suddenly lay down and start to move his legs and head in what seems to be a strange action, don't worry, i-Cybie is just making sure that all of the systems are working fine.

**Note:** If the exercise is being disturbed and you find problems, please call Tiger's Helpline on **800-844-3733**.

## RECHARGE ME...PLEASE

i-Cybie will assume a special "Charge Me" position when ready for a re-charge. His eyes will alternate red and green until the battery is removed. After charging, re-install the battery and press the head switch for 3 seconds, i-Cybie will come back to life!



## i-CYBIE INTERACTIONS

- You can touch the buttons on i-Cybie for specific Actions.
  - To make i-Cybie listen, press his head button for 3 seconds and release. He will come to "Listen Mode" with orange eyes to show he is listening. Shown below, \* = CLAP and / = PAUSE so CLAP PAUSE CLAP =\*/ \*.
  - Voice Command must be trained before use. Please refer to the Instruction book for details.
  - The IR Remote is used by aiming at i-Cybie's chest and pressing a button.
- WHEN i-CYBIE'S EYES ARE ORANGE USE CLAP COMMANDS**  
**WHEN i-CYBIE IS IDLE YOU CAN USE THE REMOTE CONTROL**

Remote Button	Clap Command	Voice Command	i-Cybie Buttons	Action
1	*	"Bow"		Take A Bow
2	**	"Sit Down"	quick Back press	Sit
3	***	"Good Boy"	quick Head press	Head moves up/down
4	****	"Trick"		"Trick Mode"
5	*/*	"Bad Dog"	Nose	Pee
6	*/**	"i-Cybie"	Pet Sensor	Wag Tail
7	*/***	"Stay"	long Back press	Stay
8	*/****	"Guard"		"Guard Mode"
9				"Listen Mode" (attention position eyes ORANGE)
10				"Advanced Play Mode"
11				"Train Voice"
12				Exit "Mode" (10, 11, Trick, Stay)
Small				Pause (enter low power mode)
Large				Stop/Enter

Press Back Key can exit "Guard Mode"/ "Stay Mode".