

Merbabies™* make bath time a blast! These floating, fun-loving friends can actually create swirls of pretty colors in the water! The Merbabies™* collection makes a fashion – and splashin’ – statement with 6 different dolls to choose from! They’re totally collectible, totally glamorous and totally ready to make tub time terrific!

 **WARNING:**
CHOKING HAZARD-Small parts.
Not for children under 3 years.

Merbabies™*

Swing 'N Splash Ferris Wheel™*



Spin the Merbabies™* dolls through the water on the swings and watch their magical colors appear in the water!



Make a splash on the colorful waterslide with your Merbabies™* dolls!



Magical Tub Tints® tablets make vibrant colors appear in the water.

Replacement Tub Tints® can be purchased at all major participating toy stores.

Note: Tub Tints® may stain skin, clothing or other surfaces. Wet hands or other wet surfaces will activate the Tub Tints®. Use soap and water to clean.
Not a food product. Do not eat Tub Tints®.
Conforms to ASTM D-4236

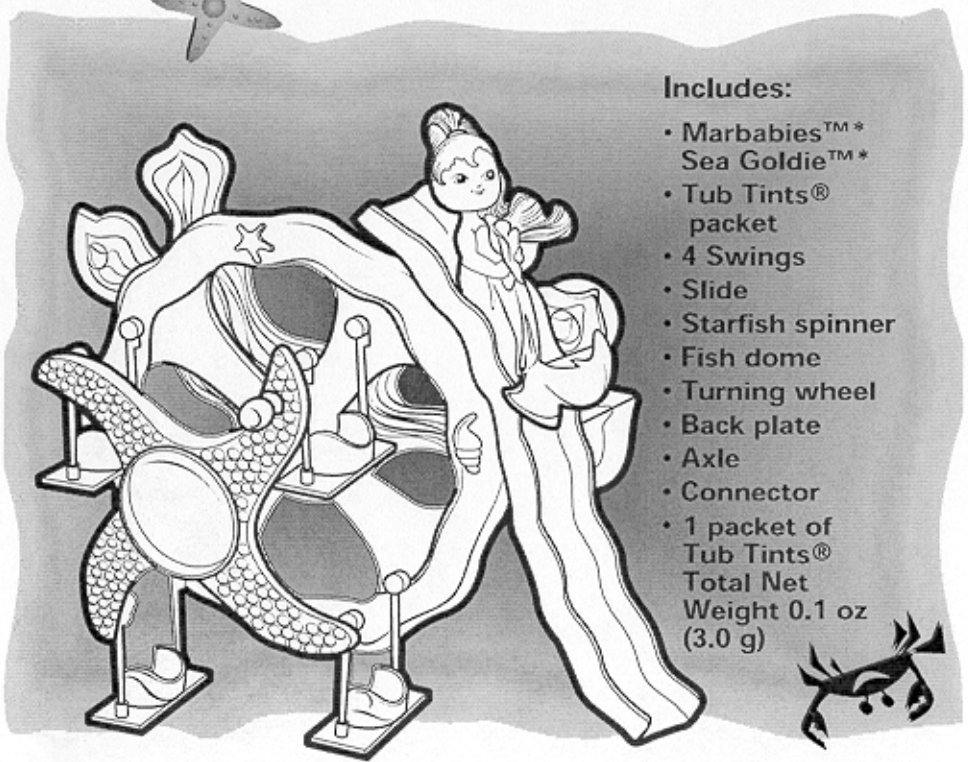
©2002 Vivid Imaginations Ltd. All Rights Reserved.
©2002 Equity Marketing, Inc. Patent Pending.
®* and/or ™* & © 2002 Hasbro,
All Rights Reserved.
® denotes Reg. U.S. Pat. & TM Office.
2041 PN 6159760000



Questions? Call: 1-800-327-8264



Thank you for buying this Merbabies™* product!



Includes:

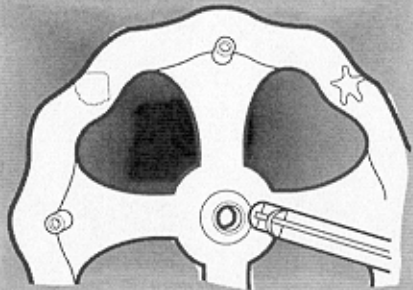
- Merbabies™* Sea Goldie™*
- Tub Tints® packet
- 4 Swings
- Slide
- Starfish spinner
- Fish dome
- Turning wheel
- Back plate
- Axle
- Connector
- 1 packet of Tub Tints® Total Net Weight 0.1 oz (3.0 g)



Assembly:

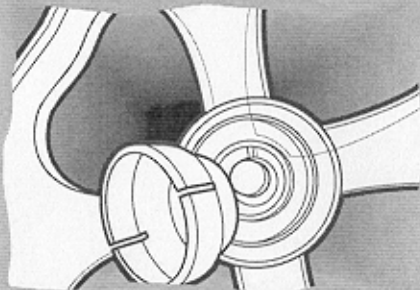
1

Attach the axle to the turning wheel (one time snap).



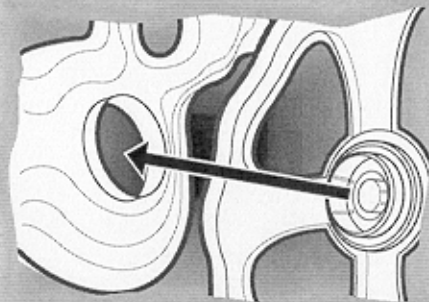
2

Attach the axle onto the connector (one time snap).



3

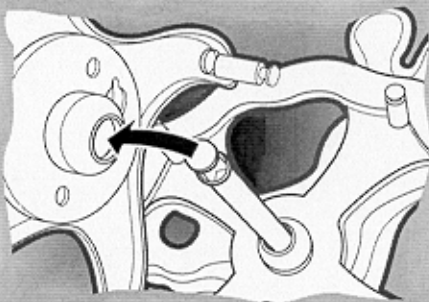
Snap the turning wheel onto back plate (multi time snap).



Note: If front assembly becomes detached from rear assembly, it can be reattached.

4

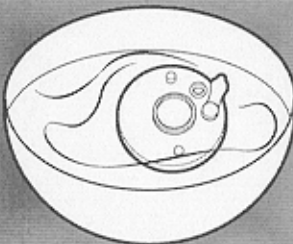
Place the starfish spinner onto the axle.



Note: This is a one-time assembly.

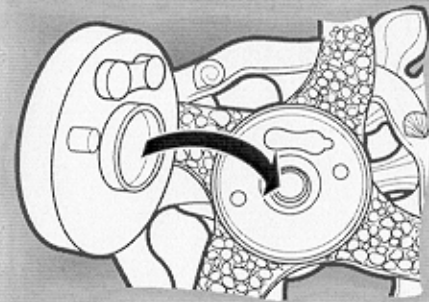
5

Remove cap. Submerge the fish dome under water until full and replace cap.



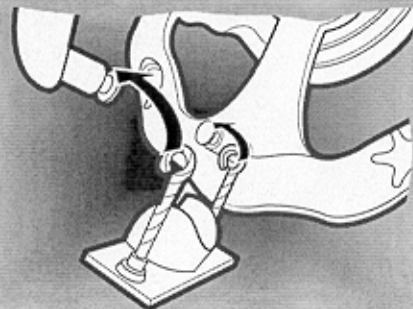
6

Fit the fish dome into the starfish spinner.



7

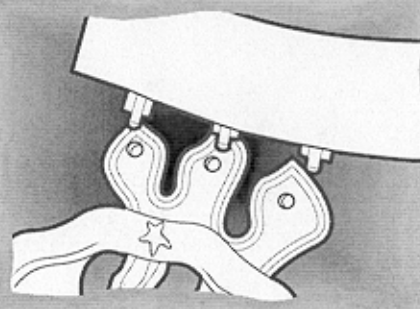
Hook the swings onto the seat pins that are attached to the starfish spinner.



Note: All the seats must be attached in the same direction for correct play.

8

Snap slide into back plate



9

Place entire unit onto tub with suction cups.

Note: It is helpful to moisten suction cups.