



MASSIVELY  
mini.<sup>™</sup>  
MEDIA

**USER GUIDE**

## FCC STATEMENT

This device complies with part 15 of the FCC Rules. Operation is subject to the following two conditions: (1) This device may not cause harmful interference, and (2) this device must accept any interference received, including interference that may cause undesired operation.

**Warning:** Changes or modifications to this unit not expressly approved by the party responsible for compliance could void the user's authority to operate the equipment.

This equipment has been tested and found to comply with the limits for a Class B digital device, pursuant to Part 15 of the FCC Rules. These limits are designed to provide reasonable protection against harmful interference in a residential installation. This equipment generates, uses and can radiate radio frequency energy, and, if not installed and used in accordance with the instructions, may cause harmful interference to radio communications. However, there is no guarantee that interference will not occur in a particular installation. If this equipment does cause harmful interference to radio or television reception, which can be determined by turning the equipment off and on, the user is encouraged to try to correct the interference by one or more of the following measures:

- Reorient or relocate the receiving antenna.
- Increase the separation between the equipment and the receiver.
- Consult the dealer or an experienced radio/TV technician for help.

Shielded cables must be used with this unit to ensure compliance with the Class B FCC limits.

If you have any questions, please contact:

Consumer Affairs

Hasbro, Inc.

1027 Newport Avenue,

Pawtucket, RI

Tel: 1-800-844-3733

Fax: 1-401-431-8082

Product and colors may vary.

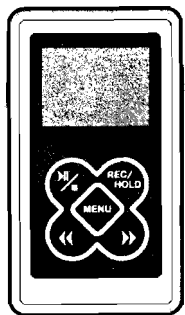
© 2006 Hasbro. All Rights Reserved.

TM & ® denote U.S. Trademarks.

**TIGER**  
ELECTRONICS

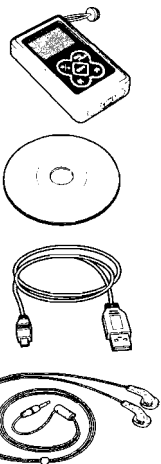
Where Technology Comes to Play!™



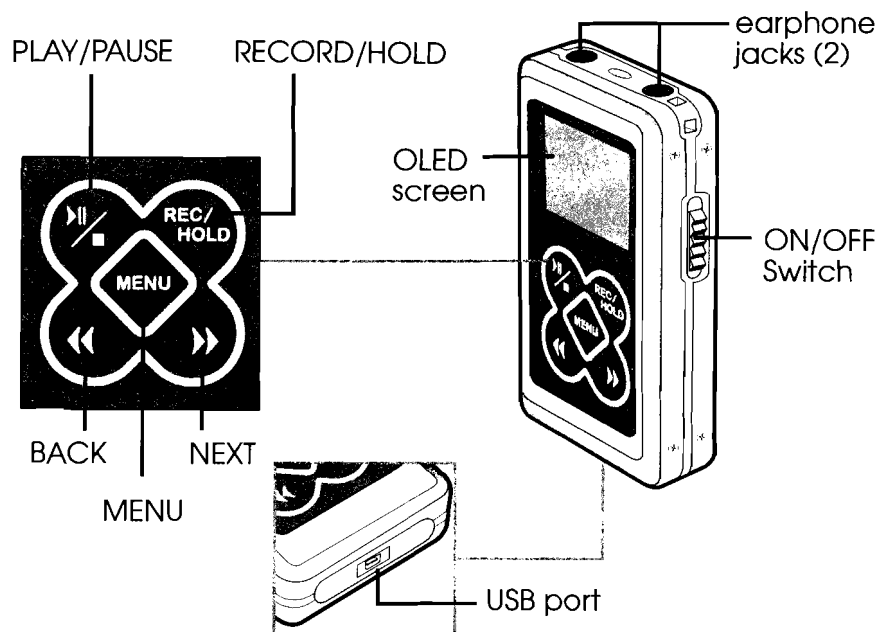


Thank you for buying MASSIVELY MINI™ MEDIA, the massively small media player!

Before you use this product, read and follow all instructions carefully. If, after reading the instructions, you have questions about MASSIVELY MINI™ MEDIA, contact Hasbro Consumer Affairs at 1-800-844-3733.



- MASSIVELY MINI™ MEDIA player
- software mini-disc -- contains video conversion software
- USB cable -- lets you connect player to computer for charging, transferring files
- earbuds



miniMEDIA buttons do different things depending on how you press them. As you read these instructions, you'll see the terms below, used in step-by-step directions. Note the terms and what they mean:

- **Touch** – Touch the button quickly and release. Touch for one second.
- **Press-and-hold** – Press the button, hold for 3 seconds, and release.

The more you use miniMEDIA, the more you'll get accustomed to these differences.



miniMEDIA is simple to use! Hook up miniMEDIA to your computer, transfer video, music, or photo files from your computer to your player, sit back and enjoy!

Your miniMEDIA player comes partially charged, so when you take it out of the box, it's ready to play!

miniMEDIA comes with a software mini-disc. This software converts video files into the correct format for your miniMEDIA player. It also contains a media player, which allows you to watch AMV video files on your computer. (See p. 6).

**Power ON/OFF** –Slide the On/Off switch on the side of the player to the “up” (on) or “down” (off) position. After a “start-up animation” sequence, you will be taken to the Main Menu.

Scroll through the Main Menu by touching the NEXT/BACK buttons. Note the icons and what you can do:



**VIDEO** - Access and watch your AMV video files.



**MUSIC** -Access and listen to your mp3 or WMA music files.



**PHOTO** - Access and look at your JPG photo files.



**RADIO** - Access the FM radio. You can listen to the radio and record from the radio.



**PLAYBACK** - Access and listen to WAV files of audio you record off the radio.

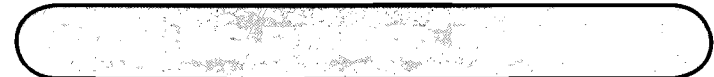


**SETTINGS** - Change settings on your miniMEDIA, such as Brightness, Screen Saver, etc. (see p. 15).

To select any of these modes, touch the MENU button when you are on the icon you want. To return to the Main Menu, press-and-hold the MENU button.

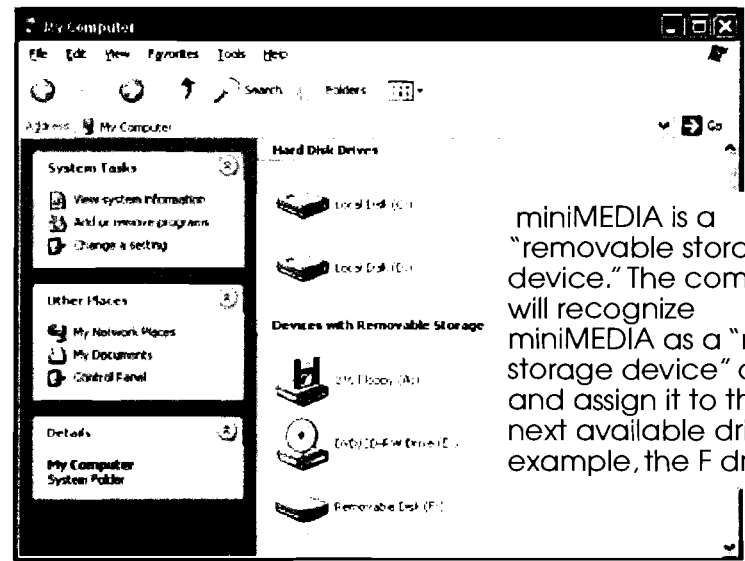
**Sleep Mode** – To put miniMEDIA to sleep, press-and-hold the PLAY/PAUSE button. After an animation sequence, the screen will go dark. To wake miniMEDIA up, press-and-hold PLAY/PAUSE again.

**Lock** – Press-and-hold the REC/HOLD button at any time to “lock” your player, so that nothing happens when keys are pressed. To unlock your player, press-and-hold REC/HOLD again.



To move audio and video files onto your miniMEDIA player, first connect the player to your computer.

1. Take the USB cable that came with your miniMEDIA player and connect one end to your player's USB port and the other end to your computer's USB port.\* Turn the player on.
2. Look at your computer and go to “My Computer”:



miniMEDIA is a “removable storage device.” The computer will recognize miniMEDIA as a “mass storage device” on and assign it to the next available drive (for example, the F drive).

\* The first time you connect your miniMEDIA player to your computer, it will be recognized as “new hardware.”

To see a video or a photo or to listen to a music file on miniMEDIA, the file needs to be in the correct format:

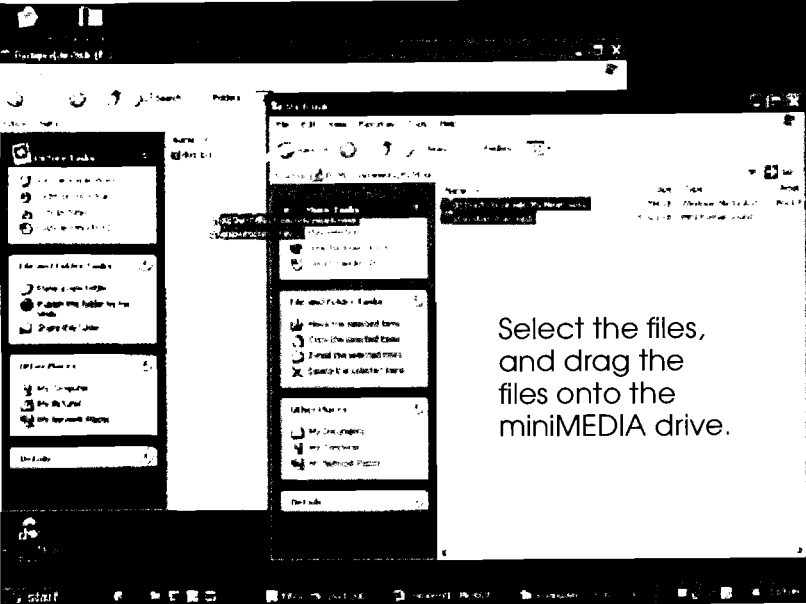
- Video must be in AMV format\*
- Audio must be in mp3 or WMA format
- Photos must be in JPG format

\* For information on how to convert video files to AMV, see p. 6.

NOTE: You can actually move any type of file onto your miniMEDIA, but if the file is not in the correct format, miniMEDIA will not play it.

Here's how to move files from your computer to miniMEDIA:

1. Connect miniMEDIA to your computer. Switch miniMEDIA on.
2. Look at your computer's desktop and find the drive your miniMEDIA is connected to. Double-click on this drive to open it in a window.
3. Find the computer files you wish to move onto miniMEDIA. Select the files, and drag the files onto the miniMEDIA drive.



4. The files will copy to the miniMEDIA player.
5. In the player window, you may remove files and also create and name folders to organize your files.

If your miniMEDIA player does not have enough memory to accept the files, your computer will let you know.

NOTE: miniMEDIA comes with some preloaded video content. To save this content and watch it later, drag the files from your miniMEDIA player to your computer. Then delete the files from miniMEDIA to make room for new files.

NOTE: Touching miniMEDIA player buttons while it is transferring files will disrupt the USB connection. To resume transfer, turn your player off, and on again.



Your miniMEDIA player comes with a software mini-disc. There are two pieces of software on the disc:

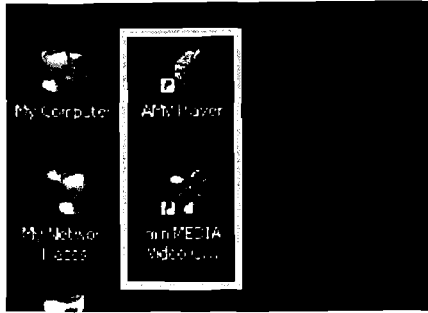
- **The Video Converter** lets you convert video files to an AMV format so you can watch them on your miniMEDIA player.
- **The AMV Video Player** lets you watch AMV video files on your computer.

Here's how to install the software onto your computer:

1. Take the enclosed mini-disc and insert it into your computer.\*
2. The software will install itself automatically.
3. Follow the prompts in the Set-Up Wizard.
4. Confirm the installation, and click "Close" when it's done.

\* miniMEDIA software is not Mac OS compatible.

A shortcut to these software programs should appear on your desktop automatically.

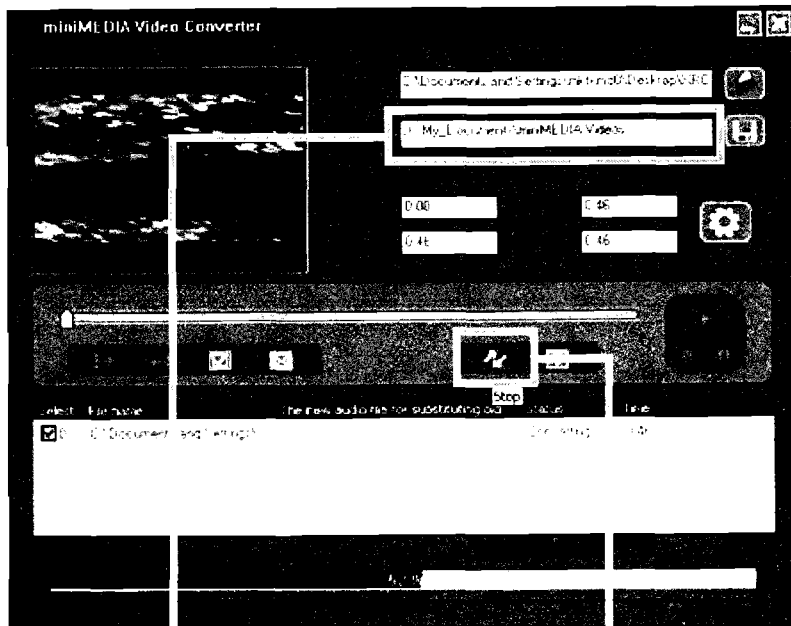


Or you can look under Start / Programs / Tiger Electronics / miniMEDIA. There, you'll see the installed software:



Here's how to convert video files to the correct format:

1. Open the miniMEDIA Video Converter tool.

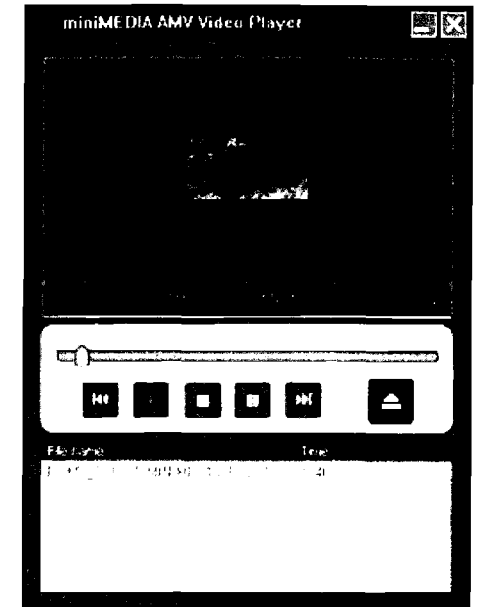


Default Location for converted file.

Convert

2. Click on the "Get File" icon and browse for the file you want to convert. miniMEDIA software can convert most unprotected AVI, MPEG, or WMV files.
3. Click on the "Save To" icon to browse for a place on your computer to save this file or accept the default location.
4. Click the "Convert" button to begin file conversion. Once conversion is complete, the AMV Video Player will open and you can preview the file.

Once the process is complete, your converted file, in AMV format, will be saved to your computer. You're now ready to transfer it to your miniMEDIA player.



For information on how to move files to your miniMEDIA player, see p. 4.

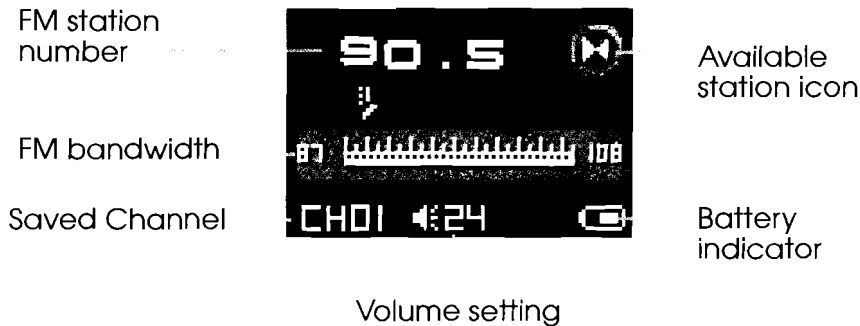


Switch miniMEDIA on. After the animation sequence, you will see the Main Menu. Touch NEXT/BACK to find Radio Mode and touch MENU to select this mode.

1. You will see the Radio bandwidth. miniMEDIA automatically goes to the last radio station you were listening to.
2. When you press-and-hold the NEXT/ BACK buttons, miniMEDIA searches for the next available radio station.

3. Touch NEXT/BACK to adjust the FM setting incrementally. If you don't know the number of the station, watch for the Available Station icon, or listen for the station to come in clearly.

*NOTE: Your earbuds must be attached to the player, to seek stations.*



Touch MENU to access the submenu and select an option. To exit the submenu, scroll to "Exit" on the menu and touch MENU.

**Volume Set** -- Touch NEXT/BACK to adjust volume. To save the setting, touch MENU or leave the player alone for approximately 5 seconds.

**Save** -- When you are on a station you want to save, touch MENU. Select "Save" and touch MENU. The saved radio station is assigned a number, visible in the lower left corner of the Radio Screen. To scroll through your saved stations, touch PLAY/PAUSE. You will see your saved station numbers change.

You may save up to 20 radio stations. You cannot save the same radio station twice (for example, as both #4 and #10).

**Delete** -- When you are on a station you want to delete, touch MENU. Select "Delete" and touch MENU: this deletes the station. If you have more than one saved station, deleting one station shifts the other stations after it one up in the numbered queue: that is, if you have 3 saved stations and you delete saved station #1, saved station #3 becomes #2, and #2 becomes #1.

**Delete All** -- Select "Delete All" and touch MENU: this deletes all saved radio stations.

**Auto Search** -- Selecting "Auto Search" initiates a scan of the radio bandwidth to automatically save those stations the player can receive. Touch PLAY/PAUSE to scroll through the saved stations.

**Record** -- When you are on a station you want to record from, either (a) touch the REC button or (b) access the submenu to select "Record" and touch MENU to begin recording. (You'll see a small dot at the bottom of your player screen, telling you recording is in progress.) To pause recording, touch PLAY/PAUSE; to stop recording and save, touch MENU.

**Exit** -- exits the submenu



Audio files recorded from the radio are saved to your miniMEDIa player as a WAV file. To access it, go to the Main Menu and select PLAYBACK mode. You will see the file saved as "RECXX." Touch the NEXT/BACK buttons to select the file you want, and touch PLAY/PAUSE to play, and PLAY/PAUSE again to pause.\*

\* You can easily rename a WAV file when your player is connected to your computer.









