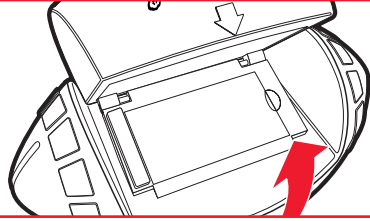


## TO USE

Picture shows top half of football open in order to illustrate how the ACTION SCREEN™ works. Football half must be held open and does not stay open on its own.

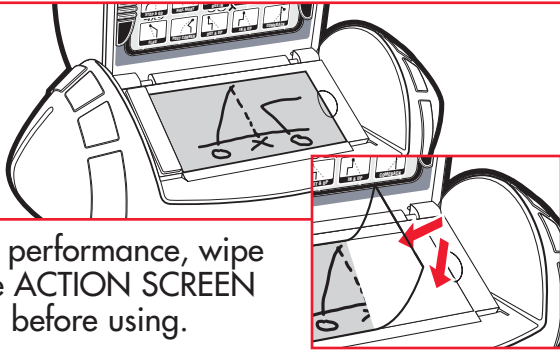
1

Open up the NERF football to reveal the ACTION SCREEN.



2

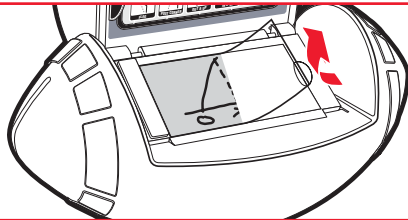
Draw a play with just your finger right on the ACTION SCREEN.



NOTE: For best performance, wipe the inside of the ACTION SCREEN with a soft cloth before using.

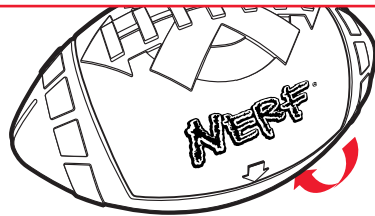
3

If you would like to erase the play, simply lift the ACTION SCREEN and then place it back down.



4

Once your final play is drawn, gently close the football and go "play your game!"



# NERF®

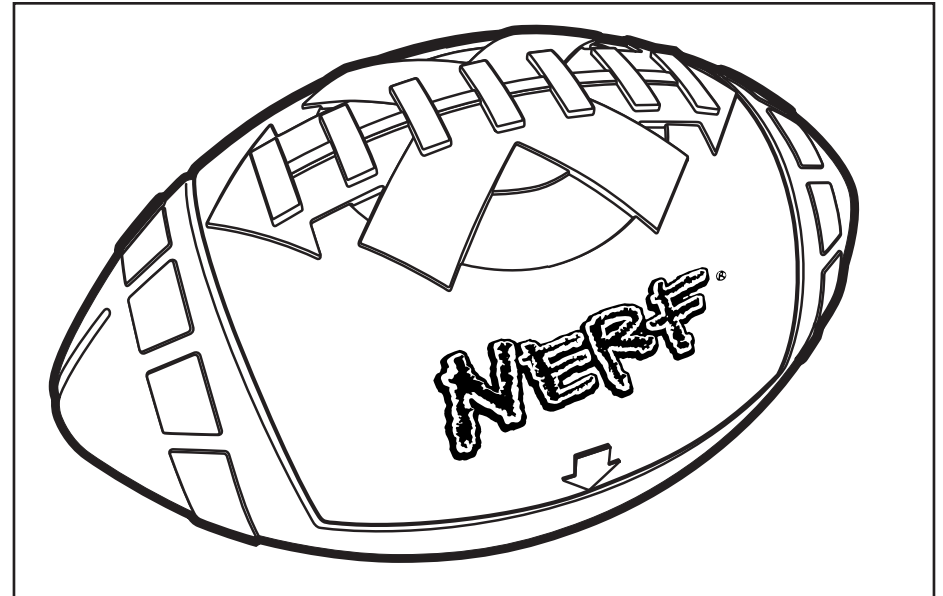
PLAY YOUR GAME™

AGES 6+  
45517

## Big Play Football™

Thank you for purchasing the NERF BIG PLAY FOOTBALL, the coolest and most advanced football there is!

Now you and your friends can draw out plays and plan your offense – just like the pros! Hidden inside this NERF football is an ACTION SCREEN™ for you and your friends to draw your secret plays to help your team win the game!



© 2003 Hasbro. All Rights Reserved.  
® denotes Reg. U.S. Pat. & TM Office.  
U.S. Patent Pending  
45517 P/N 6270380100

**NERF.COM**  
FOR NEW PRODUCTS AND OFFERS  
Questions? Call: 1-800-327-8264