

# PITFALL™

## 1. GAME STORY

"IT'S A JUNGLE OUT THERE."

Harry, one of the greatest adventurer's in the history of video games, is back! Classically back — in the recreation of PITFALL, one of the greatest video game classics ever! Truly a battle for survival of the smartest, with your help, Harry can survive falling into mines, he can race through opening and closing pits, he can swing from vines and even outsmart alligators! And still have time to search for treasures!

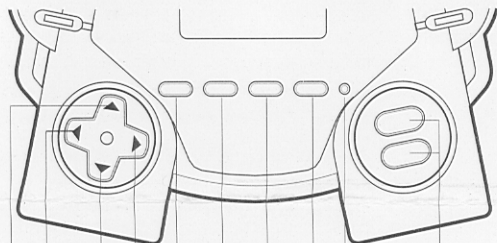
## 2. THE OBJECT OF THE GAME

"THE PLEASURE OF TREASURE"

There are a total of 32 treasures, divided into three types: money bag, gold bar and diamond ring. You WIN the game if you can pick all 32 treasures before the timer drops to zero. You have a total of 10 minutes and 3 lives for the game!

## 3. HOW TO PLAY

"IT'S MORE THAN A GAME. IT'S THE PITS!"



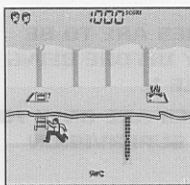
- ▲ — to move up.
  - ▼ — to move down.
  - ◀ — to move left.
  - ▶ — to move right.
  - JUMP — to jump up.
  - RESET — to reset the unit if your game malfunctions.
- ON/START** — to turn on the unit.  
— to start the game.
- PAUSE** — to pause the game.
- SOUND** — to control sound: on or off.
- OFF** — to turn off the unit.  
(The unit also shuts off after 3 minutes of no action.)

Press the ON/START button to turn on the unit. You'll hear an "ON" beep and the maximum score is displayed.

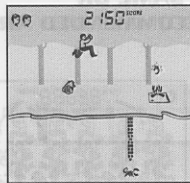
Press the ON/START button again to start the game! You begin with 3 lives and 10 minutes to complete the game.

The object of the game is to guide Harry through the jungle, avoiding obstacles and dangers as you grab as much treasure as you can along the way!

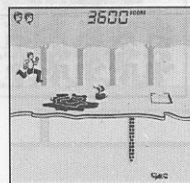
Your life is in peril every step of the way! You lose a life if you're hit by snakes, fire, scorpions and crocodiles -- and if you fall into a pit! You lose points when you get hit by a log or fall into a mine.



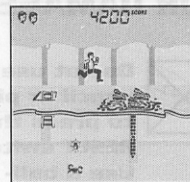
WHEN YOU FALL THROUGH A HOLE INTO A MINE, FIND A LADDER TO CLIMB OUT!



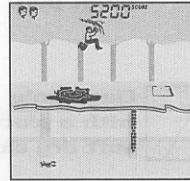
THE PITS OPEN AND CLOSE! IF YOUR TIMING IS BAD AND YOU TRY TO RUN PAST A PIT WHEN IT OPENS, YOU LOSE A LIFE!



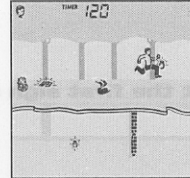
SOME OF THE PITS ARE FULL OF WATER. GULGGG!!!!



WHERE THERE'S WATER, THERE CAN BE ALLIGATORS. AND THEY'RE HUNGRY!



SWING FROM THE VINES!



CAN YOU PICK UP ALL THE TREASURE IN 10 MINUTES?

To catch your breath, you can press PAUSE to pause play. Then press ON/START to continue play. After a GAME OVER, press the ON/START button to start a new game!

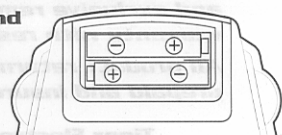
## 4. SCORING

"THE RICHES OF ANCIENT CIVILIZATIONS CAN BE YOURS"

- MONEY BAG +1000 POINTS
- GOLD BAR +2000 POINTS
- DIAMOND RING +5000 POINTS
- GET HIT BY A LOG LOSE 50 POINTS
- FALL INTO A MINE LOSE 50 POINTS

## 5. INSERTING THE BATTERIES

When the battery needs replacing, remove the battery compartment cover at the back of the unit. Remove the exhausted battery and install a new battery of 2 "AA", LR6 or equivalent (not included), marking sure to align "+" and "-" as shown.



TO ENSURE PROPER FUNCTION:

- DO NOT MIX OLD AND NEW BATTERIES.
- DO NOT MIX ALKALINE, STANDARD OR RECHARGEABLE BATTERIES.
- BATTERY INSTALLATION SHOULD BE DONE BY AN ADULT.
- NON-RECHARGEABLE BATTERIES ARE NOT TO BE RECHARGED.

- RECHARGEABLE BATTERIES ARE TO BE REMOVED FROM THE TOY BEFORE BEING CHARGED ( IF REMOVABLE ).
- RECHARGEABLE BATTERIES ARE ONLY TO BE CHARGED UNDER ADULT SUPERVISION ( IF REMOVABLE ).
- ONLY BATTERIES OF THE SAME OR EQUIVALENT TYPE AS RECOMMENDED ARE TO BE USED.
- BATTERIES ARE TO BE INSERTED WITH THE CORRECT POLARITY.
- EXHAUSTED BATTERIES ARE TO BE REMOVED FROM THE TOY.
- THE SUPPLY TERMINALS ARE NOT TO BE SHORT CIRCUITED.



**THIS WARRANTY IS IN LIEU OF ALL OTHER WARRANTIES AND NO OTHER REPRESENTATIONS OR CLAIMS OF ANY NATURE SHALL BE BINDING ON OR OBLIGATE TIGER IN ANY WAY. ANY IMPLIED WARRANTIES APPLICABLE TO THIS PRODUCT, INCLUDING WARRANTIES OF MERCHANTABILITY AND FITNESS FOR A PARTICULAR PURPOSE, ARE LIMITED TO THE NINETY (90) DAY PERIOD DESCRIBED ABOVE. IN NO EVENT WILL TIGER BE LIABLE FOR ANY SPECIAL, INCIDENTAL, OR CONSEQUENTIAL DAMAGES RESULTING FROM POSSESSION, USE, OR MALFUNCTION OF THIS TIGER PRODUCT.**

Some states do not allow limitations as to how long an implied warranty lasts and/or exclusions or limitations of incidental or consequential damages, so the above limitations and/or exclusions of liability may not apply to you. This warranty gives you specific rights, and you may also have other rights which vary from state to state.

## 6. CAUTION/DEFECT OR DAMAGE



High temperature will destroy the unit. Do not leave unit in direct sunlight.



Do not use a pencil or pin to press the RESET switch. Use a ball-point pen.



Do not press the liquid crystal display and avoid heavy shock of the display may fail.



Clean only with a piece of soft dry cloth.

Replace battery at the first sign of erratic operation.

## 7. 90-DAY LIMITED WARRANTY

Tiger Electronics, Inc. (Tiger) warrants to the original consumer purchaser of this product that the product will be free from defects in materials or workmanship for 90 days from the date of original purchase. This warranty does not cover damages resulting from accident, negligence, improper service or use or other causes not arising out of defects in materials or workmanship.

During this 90-day warranty period, the product will either be repaired or replaced (at Tiger's option) without charge to the purchaser, when returned with proof of the date of purchase to either the dealer or to Tiger.

Product returned to Tiger without proof of the date of purchase or after the 90-day warranty period has expired, but prior to one year from the original date of purchase, will be repaired or replaced (at Tiger's option) for a service fee of U.S.\$7.50. Payments must be by check or money order payable to Tiger Electronics, Inc.

*The foregoing states the purchaser's sole and exclusive remedy for any breach of warranty with respect to the product.*

*All product returned must be shipped prepaid and insured for loss or damage to:*

**Tiger Electronics, Inc. Repair Dept.  
980 Woodlands Parkway  
Vernon Hills, Illinois 60061 U.S.A.**

The product should be carefully packed in the original box or other packing materials sufficient to avoid damage during shipment. Include a complete written description of the defect, a check if product is beyond the 90-day warranty period, and your printed name, address and telephone number.

PITFALL! is a registered trademark of Activision, Inc. © Activision, Inc. All character names and likenesses are trademarks of Activision, Inc.

**TIGER ELECTRONICS INC.**

© TM & © 1998 Tiger Electronics, Inc. All rights reserved.  
980 Woodlands Parkway,  
Vernon Hills, Illinois 60061.

www.tigertoys.com.

© TM & © 1998 Tiger Electronics, (UK) Ltd.  
Belvedere House, Victoria Avenue, Harrogate,  
North Yorkshire, HG1 1EL, England.

PRINTED IN CHINA