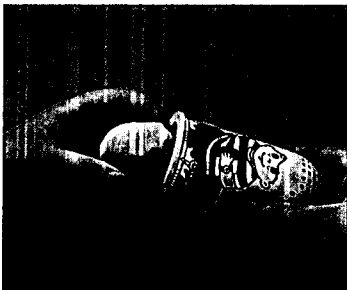


GROWING HAIR:



1. Choose the boy or girl character and load compound through the bottom as shown. Use different colors — and your imagination — to create lots of different looks.



2. Place character on chair by sliding character underneath the raised fitting as shown.



3. Before you begin playing, ask an adult to snap the post into barber shop base. Once snapped, press chair over base and watch your character's hair magically GROW! Lift chair off base before removing character.

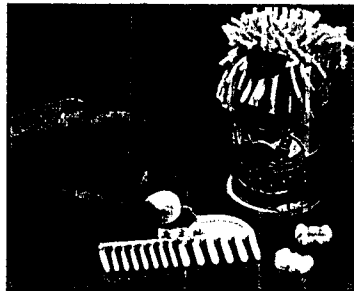
STYLING HAIR:



1. Now for the most fun of all! Cut and style your character's hair into silly shapes and funny looks using the scissors, comb and razors.



2. Use the mold underneath the electric razor to give the boy character a buzz cut. Just bunch the hair above his head, take the razor and press it down on his head. Remove the mold and his hair is now a buzz cut!



3. Use bow mold on side of comb to make pretty bows for your character's hair. Use a ball of compound to remove bow from mold. Cleaning tip: Use the tab on the bottom of the hand razor to poke out the PLAY-DOH® Compound from the holes in the character's head.

EASY 3-STEP CLEANUP!

1. Place Play-Doh® Brand Modeling Compound back in cans and seal lids.
2. Remove excess from carpets/fabrics, then allow remaining compound to dry.
3. Loosen dried compound with stiff brush and vacuum clean. If necessary, brush with gentle soap and cold water. (Do not use hot water or cleaning solutions to clean Play-Doh® compound from carpets/fabrics.)

Styling results may vary depending on child's age and level of skill.

NONTOXIC CONFORMS TO ASTM D-4236

PLAY-DOH® and PLAY-DOH® logo are registered trademarks identifying quality modeling compound products produced exclusively by Hasbro, Inc. ©1996 Hasbro, Inc., Pawtucket, RI 02862 USA. All Rights Reserved.

PLAY-DOH® COMPOUND MADE IN USA. ALL OTHER COMPONENTS MADE IN MEXICO.

Product and colors may vary.

