



Mad Monster Creator™

Create creepy monsters that glow in the dark!

CONTENTS: Monster Laboratory, monster plunger with cap, monster molds and 3 matching skeletons (mummy, creature, robot), monster tool, 1 six-ounce can of PLAY-DOH® Brand Modeling Compound and 1 six-ounce can of PLAY-DOH® Brand Glow In The Dark Compound (Weight, 12 oz., 340 grams).

Results vary depending on child's age and level of skill.



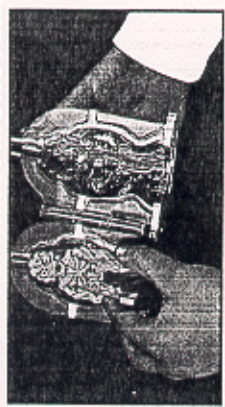
Mummy
Sea Creature
Robot



PIECES!



HOW TO MAKE A MONSTER:



1. Choose 1 of the 3 different monster molds and place the matching skeleton inside.



2. Snap the mold onto the top of the monster plunger and fasten in place with the plunger cap.



3. Knead and roll a ball of PLAY-DOH® Brand Modeling Compound and fill bottom of monster plunger as shown. (This set also comes with...

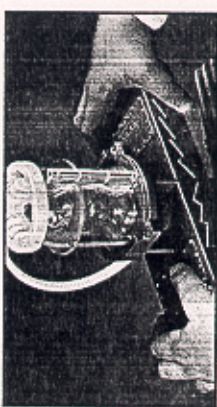
ADDITIONAL MOLDS:



6. Press compound into the molds on laboratory base and lift out to create creepy bats and lizards!

CLEAN-UP:

DO NOT USE HOT WATER OR CLEANING SOLUTIONS to clean PLAY-DOH® Brand Modeling Compound from carpets or fabrics. For best results, remove excess and allow compound to dry. Loosen compound with stiff brush and vacuum clean. If necessary, wash with gentle soap, COLD water and brush. Repeat if necessary.



4. Fit monster plunger over the pole in laboratory base and press down with both hands as shown to fill the monster mold with compound.



5. Remove mold from plunger and open it to reveal your scary monster! Now, you can take the monster tool and cut open the creature to see the creepy skeleton underneath!

NONTOXIC CONFORMS TO ASTM D-4236
PLAY-DOH® and PLAY-DOH® logo are registered trademarks of Tonka Corporation identifying quality modeling compound products produced exclusively by Hasbro, Inc. ©1994 Tonka Corporation. ©1994 Hasbro, Inc., Pawtucket, RI 02862 USA. All Rights Reserved.
MADE IN USA.



Questions? Call:
1-800-PLAYSKL



MAD MONSTER CREATOR
UPC PROOF OF PURCHASE