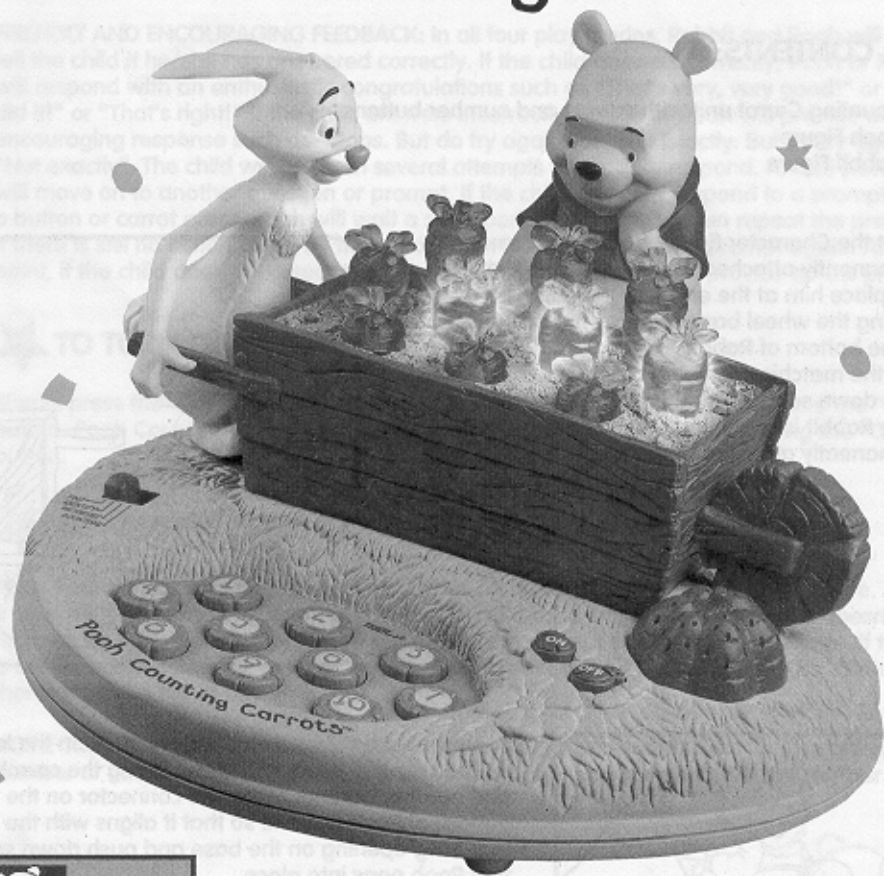


Pooh

Pooh Counting Carrots™



INSTRUCTION MANUAL

Model 87-022
For Ages 2 to 6



★ MESSAGE TO PARENTS:

Thank you for bringing home Pooh Counting Carrots. This wonderful education toy will allow your child to explore the friendly world of Pooh while learning and developing skills. What could be more exciting than learning from Pooh and Rabbit?

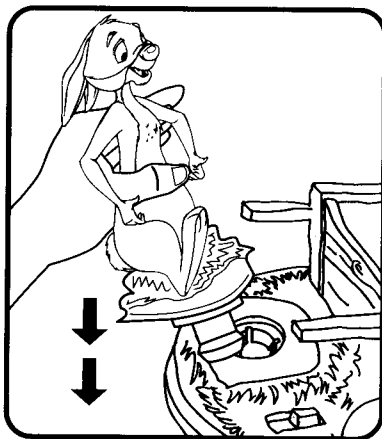
This friendly learning toy will help teach your child about numbers, counting and visual matching with the use of our delightful lighted carrots. These are fundamental skills which are critical to a preschooler's cognitive development.

Please read the instructions carefully and learn about the many different features of Pooh Counting Carrots. Therefore, you will be able to easily explain them to your child.

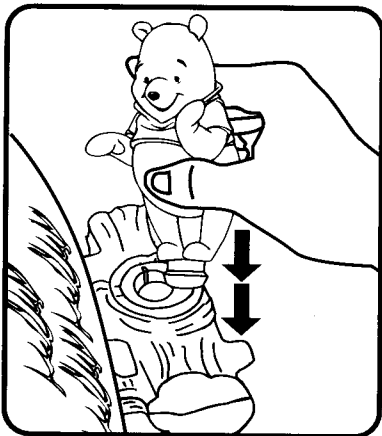
★ CONTENTS:

- 1 Counting Carrot unit with carrots and number buttons
- 1 Pooh Figure
- 1 Rabbit Figure

Insert the Character figures so they become permanently attached to the unit. Take Rabbit and place him at the end so it looks like he is holding the wheel barrow. Place the connector on the bottom of Rabbit so it aligns with the matching opening on the base and push down so that Rabbit pops into place. Once Rabbit is connected, he will stay permanently attached to the toy.



Pooh should be placed so that he stands on the log on the side of the wheel barrow facing the carrots and number buttons. Place the connector on the bottom of Pooh Figurine so that it aligns with the matching opening on the base and push down so that Pooh pops into place. Once Pooh is connected, he will stay permanently attached to the toy.

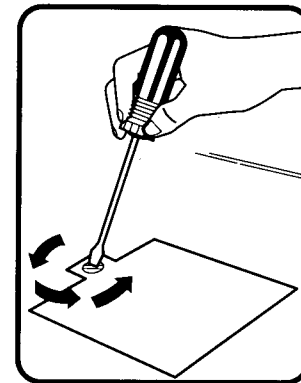


1

★ INSERTING BATTERIES:

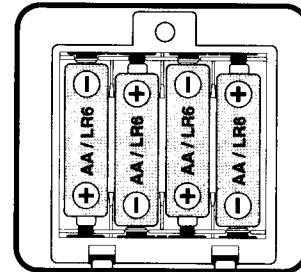
(Battery installation should be done by an adult.)

1. Pooh Counting Carrots requires 4 x 1.5V "AA" or "LR6" batteries.
2. The battery compartment is located on the bottom of the unit.
3. Open the battery door by unfastening the screw with a universal Philips ® screwdriver or a coin.
4. Fit the screwdriver or the coin into the slot and turn counter clockwise. The door should pull apart and back, in order to remove it from the product.
5. Replace the 4 x 1.5V "AA" or "LR6" batteries according to the diagram provided in the battery compartment.
6. Close the battery compartment door and tighten the screw.



To ensure proper function:

- Do not mix old and new batteries.
- Do not mix alkaline, standard or rechargeable batteries.
- Battery installation should be done by an adult.
- Non-rechargeable batteries are not to be recharged.
- Rechargeable batteries are to be removed from the toy before being charged (if removable).
- Rechargeable batteries are only to be charged under adult supervision (if removable).
- Only batteries of the same or equivalent type as recommended are to be used.
- Batteries are to be inserted with the correct polarity.
- Exhausted batteries are to be removed from the toy.
- The supply terminals are not to be short-circuited.



★ WHEN TO REPLACE BATTERIES

Change the batteries when the voices and sounds are garbled or difficult to understand, or pressing the "On" button does not cause the product to speak.

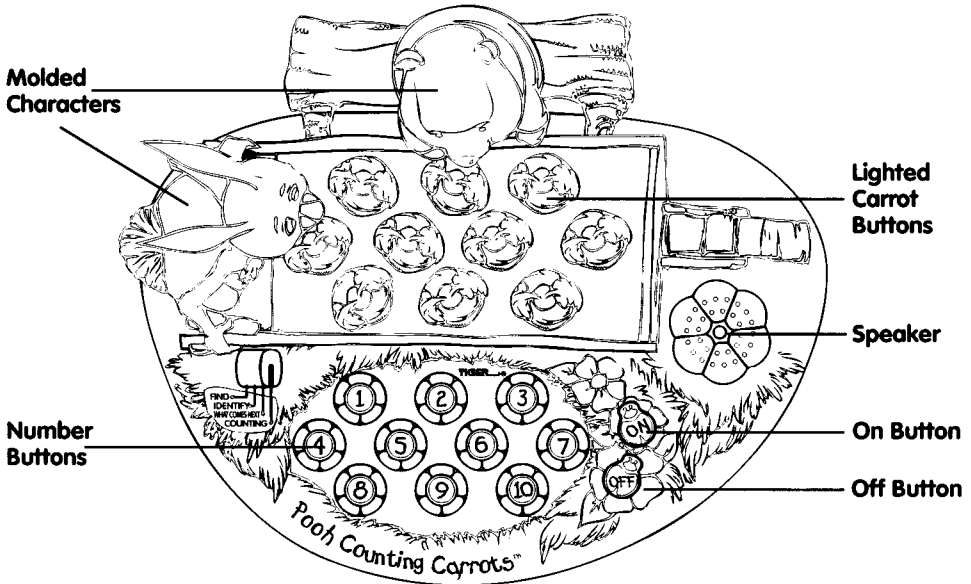
★ TAKING CARE OF POOH COUNTING CARROTS

To protect Pooh Counting Carrots follow these instructions:

- Prevent spills of food and beverage on the unit.
- Do not submerge the product in water. If the product needs to be cleaned, wipe gently with a barely damp, soft cloth.
- Do not throw or kick the product, and do not push sharp objects through the speaker openings.
- For ages 2 and up.

2

★ HOW TO USE POOH COUNTING CARROTS:



Pooh Counting Carrots is an interactive toy which teaches numbers & counting with special carrots that "Light Up".

1. Press the "ON" button (which is located on the front of the toy in the molded grassy area). You will hear a friendly greeting from Rabbit: "Why Hello There!"
2. You may choose four different ways/modes of play: Find; Identify; What Comes Next; and Count & Match.

FIND MODE: In Find Mode, Pooh asks you to find a number on the keypad. The corresponding number of carrots will light up and flash several times for a correct answer. (For example: "Find the number two").

IDENTIFY MODE: Pooh will prompt the child by saying "Press a number button". The child can then press any number on the keypad (1 to 10). If the child presses the number 5 button, then five carrots will "Light-Up" in the carrot patch. Pooh will then say "Press the carrots with the bright lights and let's start counting." The lighted carrots are buttons that kids press to count along. As the child presses each button (lighted carrot), the light goes off as Pooh counts along "1, 2, 3, 4, 5". If the child stops before all the lighted carrot buttons are pressed (counted), Pooh will say "There are still some carrots that need to be pressed. Press the carrots with the bright lights." The child can count/press the lighted carrots in any order.

WHAT COMES NEXT MODE: Pooh will ask the child to identify what comes after a certain number. The child then uses the number buttons to respond. When the child responds correctly, that number of carrots will light up and flash. For example, Pooh might ask "What comes after the number 3". If the child presses the number 4 button, then 4 carrots will light up and flash in the garden.

COUNT & MATCH MODE: (Also referred to as "Counting Mode"). A random number of carrots will light up one at a time in the garden. As they light up, Pooh will count them out loud. He then asks the child "How many carrots have lit up in the garden? Press a number button." The child responds with the number buttons. This mode helps to teach visual and auditory matching.

FRIENDLY AND ENCOURAGING FEEDBACK: In all four play modes, Rabbit and Pooh will gently tell the child if he/she has answered correctly. If the child answers correctly, Pooh or Rabbit will respond with an enthusiastic congratulations such as "That's very, very good!" or "You did it!" or "That's right!" If the child answers incorrectly, Rabbit or Pooh will provide an encouraging response such as "Oops. But do try again" or "Not Exactly. But do try again" or "Not exactly". The child will be given several attempts to correctly respond. At that point Pooh will move on to another question or prompt. If the child does not respond to a prompt with a button or carrot press, Pooh will wait a short period of time and then repeat the prompt. If there is still no action taken by the child, then Pooh will repeat the prompt again. At that point, if the child does not respond, Pooh will ask a new question or provide a new prompt.

★ TO TURN OFF POOH COUNTING CARROTS:

Simply press the "OFF" button located next to the pumpkin shaped speaker and the "ON" button. Pooh Counting Carrots can be turned on again at any time by pressing the "ON" button.

★ AUTOMATIC SHUT-OFF

Pooh Counting Carrots has an automatic shut-off feature to help prolong battery life. After a brief period of inactivity, Pooh prompts your child for a response. If your child doesn't respond by pressing a button, Pooh will repeat the prompt or ask another prompt. If there is still no activity, the unit will then automatically turn itself off. Pressing the "ON" button can then restart the toy at any time.

NOTE: The child needs to wait until after Pooh or Rabbit are done talking before pressing a number or carrot button. Presses done while characters are speaking will not register.



★ 90-DAY LIMITED WARRANTY

Tiger Electronics, Ltd. (Tiger) warrants to the original consumer purchaser of this product that the product will be free from defects in materials or workmanship for 90 days from the date of original purchase. This warranty does not cover damage from accident, negligence, improper service or use or other causes not arising out of defects in materials or workmanship.

During this 90-day warranty period, the product will either be repaired or replaced (at Tiger's option) without charge to the purchaser, when returned with proof of the date of purchase to either the retailer or to Tiger.

Product returned to Tiger without proof of the date of purchase or after the 90-day warranty period has expired, but prior to one year from the original date of purchase, will be repaired or replaced (at Tiger's option) for a service fee of U.S.\$14.00. Payments must be by check or money order payable to Tiger Electronics, Ltd.

The foregoing states the purchaser's sole and exclusive remedy for any breach of warranty with respect to the product.

All product returned must be shipped prepaid and insured for loss or damage to:

Tiger Electronics, Ltd. Repair Dept.
980 Woodlands Parkway
Vernon Hills, Illinois 60061 U.S.A.

The product should be carefully packed in the original box or other packing materials sufficient to avoid damage during shipment. Include a complete written description of the defect, a check if product is beyond the 90-day warranty period, and your printed name, address and telephone number.

THIS WARRANTY IS IN LIEU OF ALL OTHER WARRANTIES AND NO OTHER REPRESENTATIONS OR CLAIMS OF ANY NATURE SHALL BE BINDING ON OR OBLIGATE TIGER IN ANY WAY. ANY IMPLIED WARRANTIES APPLICABLE TO THIS PRODUCT, INCLUDING WARRANTIES OF MERCHANTABILITY AND FITNESS FOR A PARTICULAR PURPOSE, ARE LIMITED TO THE NINETY (90) DAY PERIOD DESCRIBED ABOVE. IN NO EVENT WILL TIGER BE LIABLE FOR ANY SPECIAL, INCIDENTAL, OR CONSEQUENTIAL DAMAGES RESULTING FROM POSSESSION, USE, OR MALFUNCTION OF THIS TIGER PRODUCT.

Some states do not allow limitations as to how long an implied warranty lasts and/or exclusions or limitations of incidental or consequential damages, so the above limitations and/or exclusions of liability may not apply to you. This warranty gives you specific rights, and you may also have other rights which vary from state to state.

For more information about Tiger Electronics, our products and special promotions, please visit our web site at: www.tigertoys.com

TIGER
ELECTRONICS, LTD.

©, TM, & © 1998 Tiger Electronics, Ltd.
All rights reserved.
980 Woodlands Parkway,
Vernon Hills, Illinois 60061, U.S.A.

© Disney
Based on the "Winnie the Pooh" works.
Copyright A.A. Milne and E.H. Shepard.

PRINTED IN CHINA
870220001IWTIE-01

