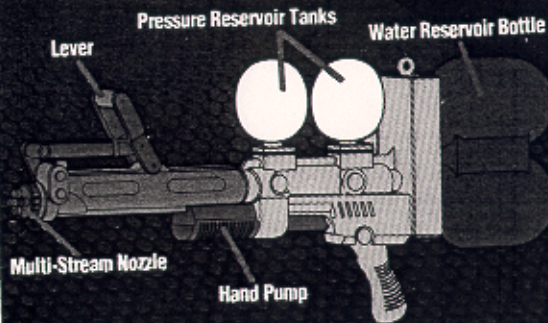


EXTRA POWER  
**XP** SUPER  
SOAKER  
250



**GUN SPECIFICATIONS**

**SIZE:**

26 3/4"

**WEIGHT EMPTY:**

2 lbs. 11 oz.

**WEIGHT FILLED:**

8 lbs. 3 oz.

**WATER CAPACITY:**

86 fl. oz.

**PUMP STROKE: 6 1/2"**

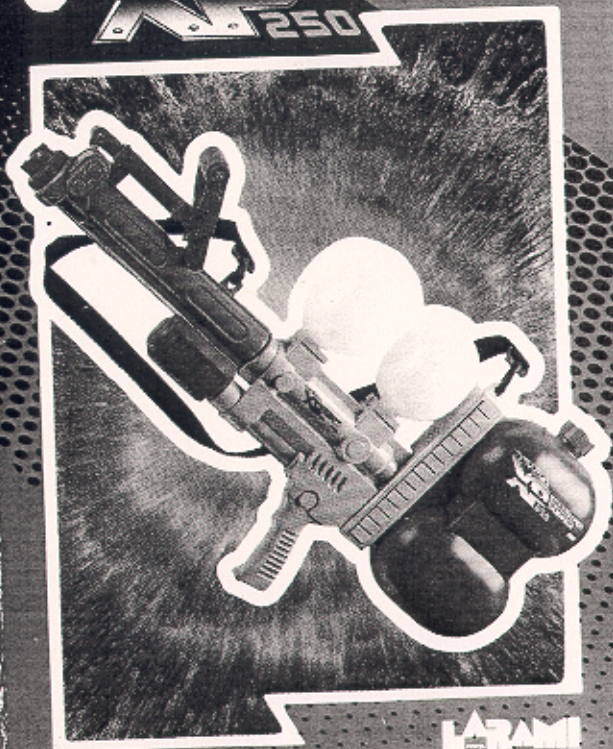
**PRESSURE:**

45 p.s.i.

**SHOOTING DISTANCE:**

50 ft.

EXTRA POWER  
**XP** SUPER  
SOAKER  
250



For comments or questions  
call: 1-800-669-TOYS

©1993 LARAMI CORPORATION  
PHILADELPHIA, PA 19107

**LARAMI**  
CORP.

**LARAMI**  
CORP.

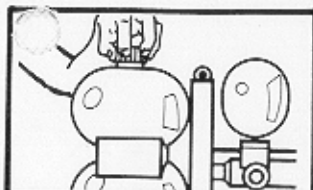


1. Prior to filling the water reservoir bottle, pump the handle 10 or more times. This pumps air into the high pressure reservoir for longer shots.
2. To load, unscrew and remove water reservoir fill cap. Fill with clean, clear tap water. Replace fill cap.
3. Use hand pump to force water into high pressure reservoir. Ten (10) or twelve (12) pumps should be enough to reach operating pressure.
4. Pull lever toward you to create a powerful soaking stream of water.
5. For maximum performance, do not allow a complete loss of pressure in pressure bottles. Pump handle a few times after each shot to maintain pressure and provide for longer shots.
6. The reservoir bottle fill cap can be removed at any time for refilling, even when water is pressurized.
7. Rotate adjustable nozzle to create 4 different water streams!

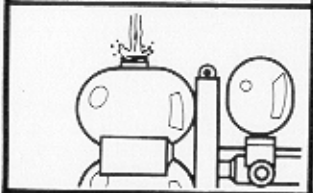
**TROUBLE SHOOTING CHART**

	Not enough pressure	No water	Low water level	Nozzle not in position
1. Gun doesn't shoot.	X	X	X	X
2. Gun doesn't shoot far.	X			
3. Gun leaks at nozzle.				X

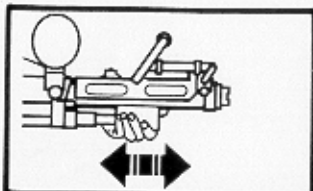
1. Do not shoot at anyone's face or eyes.
2. Do not leave gun pressurized when gun is not in use. Hold lever back until all pressure is released, prior to nonuse. Remove water from reservoir if gun is not going to be used.
3. Do not use anything but clear, clean tap water. Use of other water or liquids may be harmful or damage the gun.



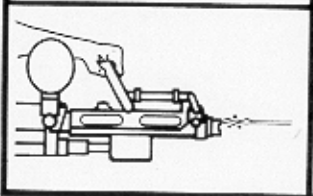
1. Unscrew fill cap.



2. Fill reservoir with clean tap water and replace cap.



3. Pump handle to build pressure in reservoir tanks.



4. Pull lever to release a powerful, soaking stream of water.