

71060

EXPERIENCE  
**THIN**  
*tronix*<sup>TM</sup>

COMMUNICATION

## Poster Phone

Thank you for  
purchasing this  
ultra cool electronic,  
poster-size phone!



**TIGER**  
ELECTRONICS



Thin-tronix<sup>TM</sup> - Ultra  
thin electronics  
designed just for you!

- REAL WORKING  
Speakerphone!
- Preset up to 6 of  
your friends' numbers  
on SPEED DIAL!
- Write in your friends'  
names and numbers!  
{Dry erase marker and eraser  
not supplied.}

10 ft. phone cord included

Requires 3 x 1.5V  
"AA"/LR6 alkaline batteries  
(not included). Phillips/cross  
head screwdriver (not  
included) needed to  
insert batteries.

## TO INSERT BATTERIES:

Using Phillips/cross head screwdriver, loosen screw in battery compartment cover (screw stays attached to cover). Remove cover. Remove and discard old batteries. Replace with 3 fresh "AA"/LR6 (1.5V) alkaline batteries. Replace cover and tighten screw.

### **CAUTION: TO AVOID BATTERY LEAKAGE**

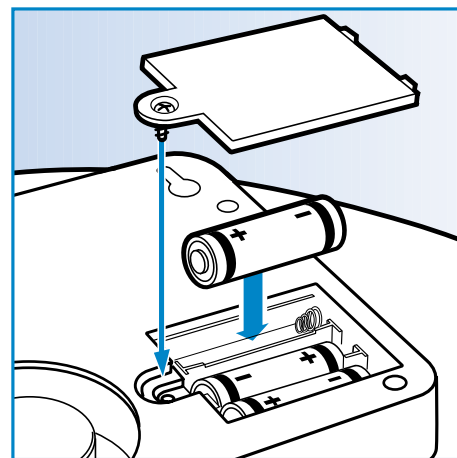
1. Be sure to insert the batteries correctly and always follow the toy and battery manufacturers' instructions;
2. Do not mix old batteries and new batteries or alkaline, standard (carbon-zinc) or rechargeable (nickel-cadmium) batteries;
3. Always remove weak or dead batteries from the product.

## IMPORTANT: BATTERY INFORMATION

Please retain this information for future reference. Batteries should be replaced by an adult.

### **CAUTION:**

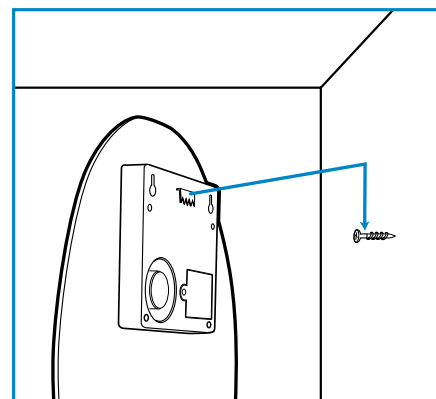
1. Always follow the instructions carefully. Use only batteries specified and be sure to insert item correctly by matching the + and – polarity markings.
2. Do not mix old batteries and new batteries or standard (carbon-zinc) with alkaline batteries.
3. Remove exhausted or dead batteries from the product.
4. Remove batteries if product is not to be played with for a long time.
5. Do not short circuit the supply terminals.
6. Should this product cause, or be affected by, local electrical interference, move it away from other electrical equipment. Reset (switching off and back on again or removing and reinserting batteries) if necessary.
7. **RECHARGEABLE BATTERIES:** Do not mix these with any other types of battery. Always remove from the product before recharging. Recharge batteries under adult supervision. **DO NOT RECHARGE OTHER TYPES OF BATTERIES.**



## TO HANG:

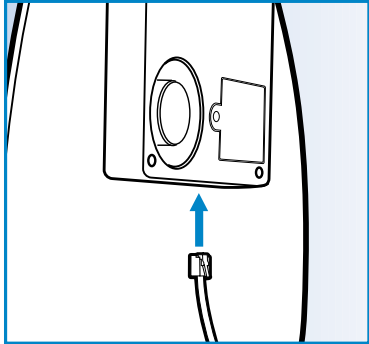
To hang your poster-size phone on the wall, put 1 nail or screw (not included) into the wall. Use the mounting bracket attached to the back of the phone to hook phone onto the nail and/or screw.

 **CAUTION:** Be careful when nailing and/or screwing into your wall because it may damage your wall.

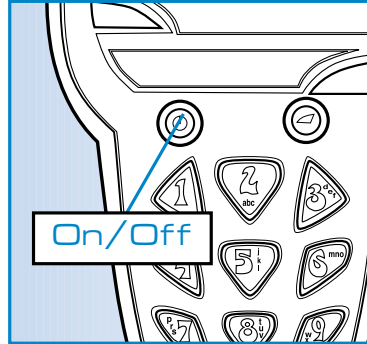


## TO USE:

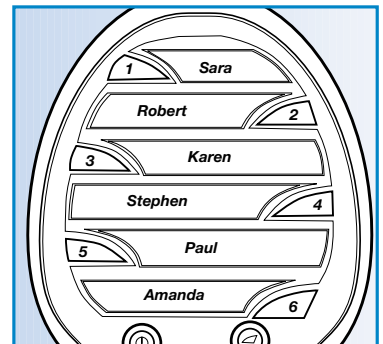
Connect one end of the 10 ft. phone cord to the socket on the phone and the other end of the phone cord to the phone jack in your wall.



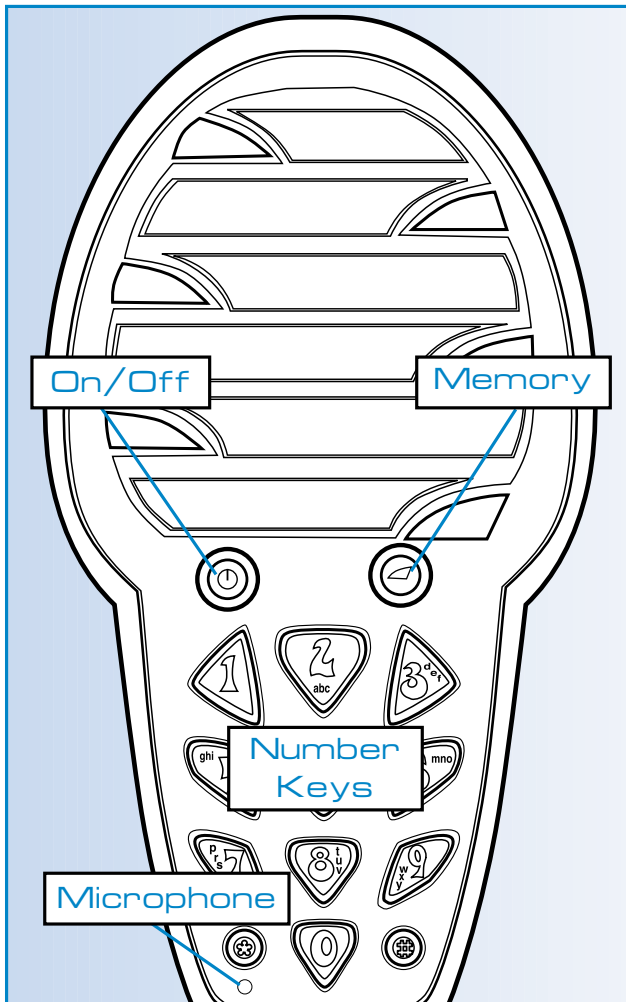
To turn phone on, simply press the On/Off button. For maximum performance, please speak into the microphone from a distance of 2-3 feet away. You will hear a double beep when you turn the telephone off.



Use a dry erase marker (not included) to write the names of your friends in the spaces provided. Use an eraser (not included) to change the names.



To store your friends' numbers complete the following steps:



1. **Storing/Overwriting a number**
  - a) Press and hold "Memory" key and then press "Power" key.
  - b) Key in the phone number (up to 32 digits).
  - c) Press "Memory" key again and then press one of the "1-6" number keys to store the number in it's corresponding memory location.
2. **Erasing a number in the memory**
  - a) Press and hold the "Memory" key and then press the "Power" key to start the memory operation process.
  - b) Press the "Memory" key and then press one of the "1-6" number keys to erase the number in it's corresponding memory location.
3. **Dialing a preset, stored number**
  - a) Press the "Power" key.
  - b) Press the "Memory" key and then press one of the "1-6" number keys to dial the number into it's corresponding memory location.
4. **Redialing the last number called**
  - a) Press and hold the "Power" key.
  - b) Press the "Memory" key and then press "0" to start redialing.

## FCC AND PHONE COMPANY INFORMATION

This equipment complies with Part 68 of the FCC Rules. On the base unit of this equipment is a label that contains, among other information, the FCC Registration Number and Ringer Equivalence Number (REN) for this equipment. If requested, this information must be given to the telephone company. The REN is useful to determine the quantity of devices you may connect to your telephone line and still have all of those devices ring when your telephone number is called. In most, but not all areas, the sum of the REN's of all devices connected to one line should not exceed five (5.0). To be certain of the number of devices you may connect to your line, as determined by the REN, you should contact your local telephone company to determine the maximum REN for your calling area. If your equipment causes harm to the telephone network, the telephone company may discontinue your service temporarily. If possible, they will notify you in advance. But if advance notice isn't practical, you will be notified as soon as possible. You will be informed of your right to file a complaint with the FCC. Your telephone company may make changes in its facilities, equipment, operations or procedures that could effect the proper functioning of your equipment. If they do, you will be notified in advance to give you an opportunity to maintain uninterrupted telephone service.

The telephone company may ask that you disconnect this equipment from the network until the problem has been corrected or until you are sure that the equipment is not malfunctioning.

If you experience trouble with this telephone equipment, please contact the following address and phone number for information on obtaining service or repairs.

**Hasbro Inc., Consumer Returns A-847, 1027 Newport Ave., Pawtucket, RI 02862, (800)844-3733.**

This equipment may not be used on coin service provided by the telephone company. Connection to party lines is subject to state tariffs. This phone only works with tone phone systems. The USOC jack RJ-11C is provided. The modular jack is a compatible one for Part 68 of FCC rules compliant.

## FCC STATEMENT

This equipment has been tested and found to comply with the limits for a Class B digital device, pursuant to part 15 of the FCC Rules. These limits are designed to provide reasonable protection against harmful interference in a residential installation. This equipment generates, uses and can radiate radio frequency energy, and, if not installed and used in accordance with the instructions, may cause harmful interference to radio communications. However, there is no guarantee that interference will not occur in a particular installation. If this equipment does cause harmful interference to radio or television reception, which can be determined by turning the equipment off and on, the user is encouraged to try to correct the interference by one or more of the following measures:

- Reorient or relocate the receiving antenna.
- Increase the separation between the equipment and the receiver.
- Consult the dealer or an experienced radio/TV technician for help.

## IMPORTANT SAFETY INSTRUCTIONS

BEFORE USING YOUR TELEPHONE EQUIPMENT, BASIC SAFETY PRECAUTION SHOULD ALWAYS BE FOLLOWED TO REDUCE THE RISK OF FIRE, ELECTRIC SHOCK AND INJURY TO PERSONS, INCLUDING THE FOLLOWING:

1. Read and understand all instructions.
2. Follow all warnings and instructions marked on the product.
3. Unplug this product from the wall telephone jack and power outlet before cleaning. Do not use liquid cleaners or aerosol cleaners. Use damp cloth for cleaning.
4. Do not use this product near water, for example, near a bathtub, wash bowl, pool or in a wet basement.
5. This product should be operated only from the type of power source indicated in these instructions. If you are not sure of the type of power supply to your home consult your local power company.
6. Do not allow anything to rest on the power cord. Do not locate this product where the cord will be damaged by persons walking on it.
7. Do not overload wall outlets extension cords, as this can result in fire or electric shock.
8. Never push objects of any kind into this product as they may touch dangerous voltage points or short out parts. This could result in fire or electric shock. Never spill liquid of any kind on this product.
9. To reduce the risk of electric shock, do not disassemble this product. Instead, when some repair work is required, take the unit to a qualified technician. Opening or removing covers may expose you to dangerous voltage or other risks. Incorrect reassembly can cause electric shock when the appliance is subsequently used.
10. Unplug this product from the wall outlet and refer servicing to qualified service personnel under the following conditions:
  - When the phone cord or plug is damaged or frayed.
  - If liquid has been spilled onto the product.
  - If the product has been exposed to rain or water.
  - If the product has been dropped.
  - If the product exhibits a distinct change in performance.
  - The product does not operate normally and proper operating instructions have been followed, adjust only those controls that are covered by the operating instructions. Improper adjustment of other controls may result in damage and will often require extensive work by a qualified technician to restore the product to normal operation.
11. Avoid using telephone during an electrical storm. There may be a remote risk of an electrical shock from lightning.
12. Do not use the telephone to report a gas leak in the vicinity of the leak.