

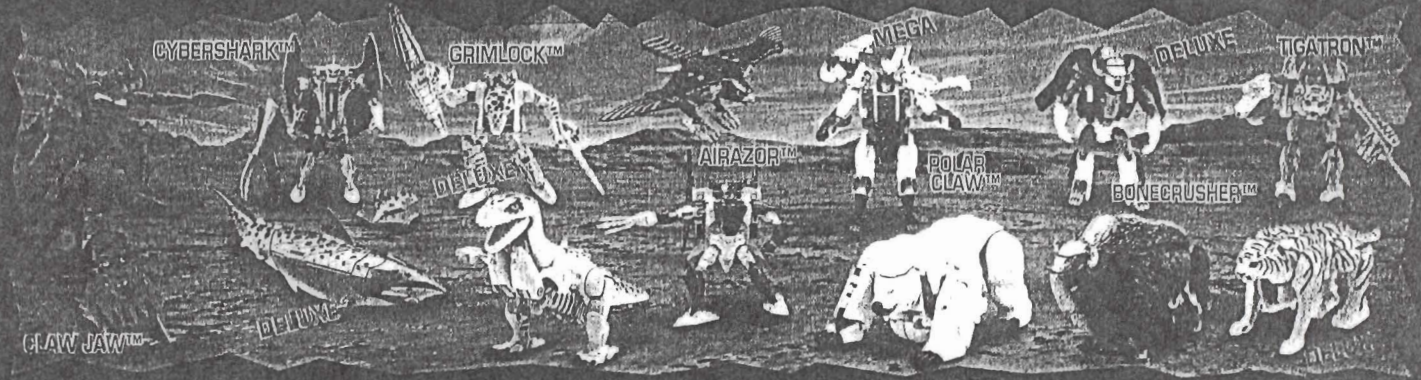
BIO-GENETIC ENGINEERING HAS ALLOWED THE TRANSFORMERS TO CREATE A PERFECT CYBERNETIC FUSION BETWEEN FEROCIOUS ANIMALS AND MECHANICAL TECHNOLOGY. THE RESULT: HEROIC MAXIMALS VS. EVIL PREDACONS! ROBOT WARRIORS DISGUISED AS WILD ANIMALS IN AN EXPLOSIVE FIGHT TO THE FINISH! THE BEAST WARS HAVE BEGUN... COLLECT THEM ALL!

BEAST WARS™

THE TRANSFORMERS®

MAXIMALS™

PREDACONS™



BIO & TECH SPECS.

CLIP AND SAVE!



- STRENGTH **50**
- INTELLIGENCE **80**
- SPEED **70**
- ENDURANCE **60**
- RANK **40**
- COURAGE **70**
- FIREPOWER **40**
- SKILL **60**



MAXIMAL™
K-9™

FUNCTION: GUARD DUTY

Placed in charge of guarding his fellow Maximals™ from a surprise Predacon™ attack, K-9™ is always alert thanks to his lightning fast reflexes and ultra-sensitive canine nose. While other Maximals™ plot defense strategies, K-9™ stands guard to survey the surrounding area for signs of Predacon™ spies. But even if he encounters an entire attack force, he can hold them off with his fast-fire missile launcher until reinforcements arrive. When it comes to combat, K-9's™ bite is definitely worse than his bark!

CLIP AND SAVE INSTRUCTIONS:

INSTRUCTIONS:

Excessive force is not necessary. Adult supervision may be necessary for younger children.

1 Hidden Energon™ Chip

Drop robot arms and rotate front german shepherd legs. Lift side panel to reveal Energon™ chip. Rub hidden Energon™ chip to reveal true allegiance.

2 Lower shoulder panels

Lower shoulder panels.

3 Open and rotate german shepherd head halves

Open and rotate german shepherd head halves.

4 Move robot arms out

Move robot arms out.

5 Compress body Raise visor

Compress body. Raise visor.

6 Lower robot legs from back of upper dog leg to join with lower dog leg. Position robot feet as shown.

7 ATTACK WEAPONS

Shield (dog's back)
Missile Storage (robot back)
Missile Launcher (Tail)

8 Missile Firing Button Shield

Insert missile, notch down, into launcher. Press button to fire. Rotate launcher handle down. Pull out shield handle. Place handles into robot's hands.

PROOF OF PURCHASE

Kenner®



© 1996 HASBRO, INC. Pawtucket, Rhode Island 02862. All Rights Reserved.
Check Us Out On-Line!
<http://www.hasbro.com>
Manufactured under license from Takara Co., Ltd.
MADE IN CHINA
540885.00

In the interest of better quality and value, we are constantly improving and updating our products. Consequently, pictures on this package may sometimes differ from the model enclosed.

Reverse the order of the instructions to convert back into a dog.

Have an adult cut along dotted lines.

