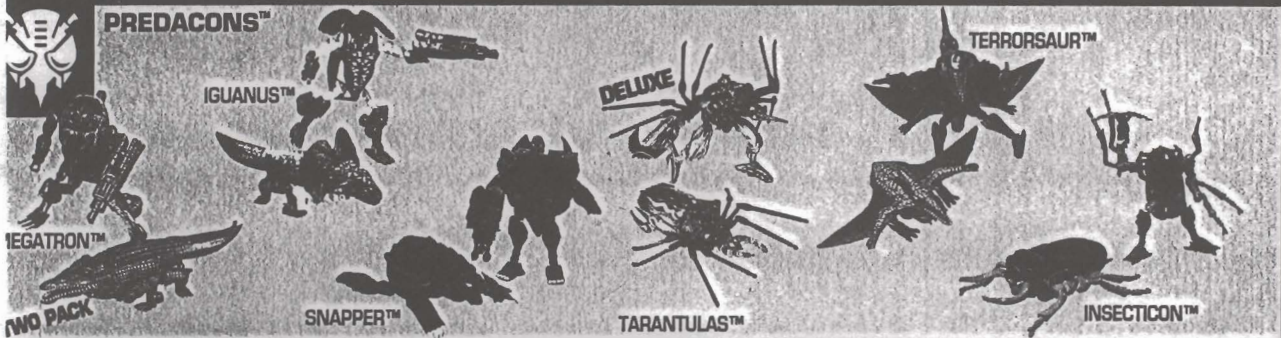
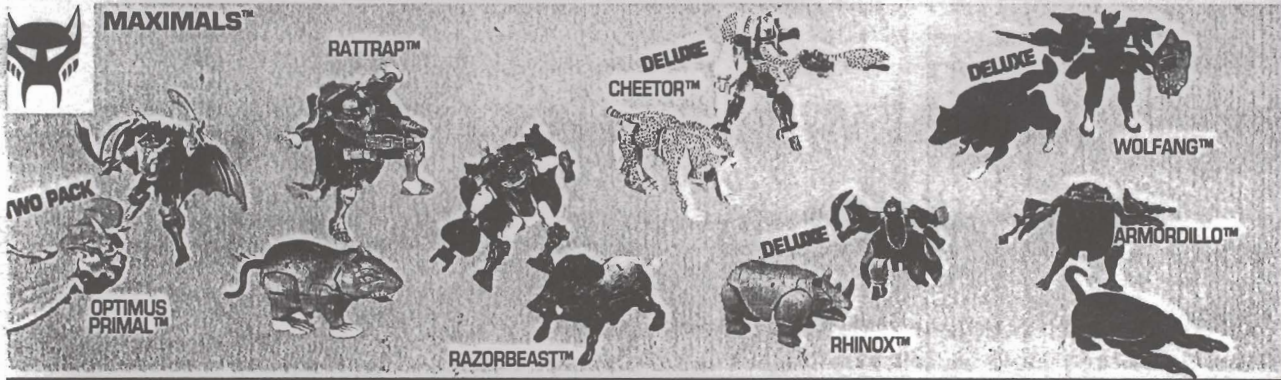


IO-GENETIC ENGINEERING HAS ALLOWED THE TRANSFORMERS TO CREATE A PERFECT CYBERNETIC FUSION BETWEEN FEROCIOUS ANIMALS AND MECHANICAL TECHNOLOGY. THE RESULT: HEROIC MAXIMALS VS. EVIL PREDACONS! ROBOT WARRIORS DISGUISED AS WILD ANIMALS IN AN EXPLOSIVE FIGHT TO THE FINISH! THE BEAST WARS HAVE BEGUN...COLLECT THEM ALL!

BEAST WARS™

THE TRANSFORMERS®



BIO & TECH SPECS.

CLIP AND SAVE!



STRENGTH

60

INTELLIGENCE

50

SPEED

90

ENDURANCE

50

RANK

50

COURAGE

90

FIREPOWER

60

SKILL

80



SECRET WEAPON LOCATION
TAIL BECOMES LAUNCHER
BACK BECOMES SHIELD



MAXIMAL™
WOLFANG™
FUNCTION: INFANTRY

A pair of glowing eyes pierce the night like twin lasers scanning for prey. Steel-plated fangs glisten as the full moon rises. A deep growl rumbles in the night air. It is WOLFANG, the warrior beast, searching for Predacon™ enemies! Swift and agile, prefers to hunt cloaked as an animal. But quickly converts to robot mode for battle, when he can best utilize the secret attack launcher disguised as his tail!

CLIP AND SAVE INSTRUCTIONS:

INSTRUCTIONS:

Excessive force is not necessary.
Adult supervision may be necessary for younger children.

- Drop robot arms and rotate front wolf legs.
- Lower shoulder panels.
- Open and rotate wolf head halves.
- Move robot arms out.
- Compress body. Raise visor.
- Lower robot legs.
- 7 SECRET WEAPON**
Shield
Crossbow
Crossbow Launcher
- 8** Insert Crossbow Notch Up
Rotate Launcher Handle Down
Shield
Rotate Shield Handle
Place weapon and shield in hands.

PROOF OF PURCHASE



© 1995 HASBRO, INC., Pawtucket, Rhode Island 02862. All Rights Reserved. Manufactured under license from Takara Co., Ltd. ® denotes Reg. U.S. Pat. &™ Office.

IN THE INTEREST OF BETTER QUALITY AND VALUE, WE ARE CONSTANTLY IMPROVING AND UPDATING OUR PRODUCTS. CONSEQUENTLY, PICTURES ON THIS PACKAGE MAY SOMETIMES DIFFER FROM THE MODEL ENCLOSED.



WOLFANG™

530028.00

MADE IN CHINA



Reverse the order of the instructions to convert back into wolf

Have an adult cut along dotted lines.