



AGES
3+

ALSO INCLUDES:



x3 1.5VAAA
LR03 size
**BATTERIES
INCLUDED**

Replace with 3 x 1.5V
“AAA” or LR03 size
alkaline batteries.
Phillips/cross head
screwdriver (not
included) needed to
replace batteries.

Please read
and follow
instructions
carefully.



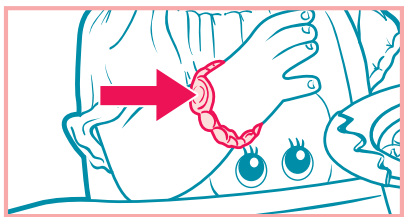
**Baby
Alive®**

Baby All Gone™

NOTE: BABY ALL GONE is for pretend-feeding only. Do not give her real water, doll juice or doll food.

TO PLAY

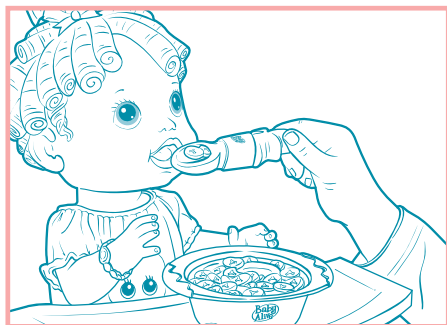
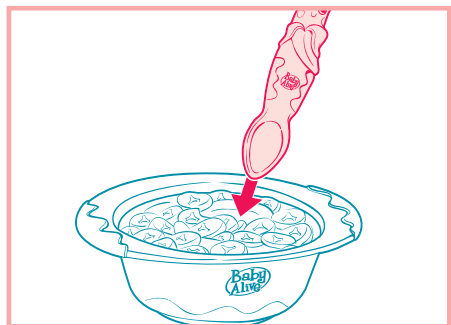
Playtime



Your **BABY ALL GONE** doll has so much to say! Press her **wrist bracelet** over and over again to hear her talk.

Mealtime

Bananas are yummy! Here's how to “feed” your **BABY ALL GONE** doll:



1. Put her special spoon in the banana bowl to “load up” some bananas.
2. Put the spoon in your doll’s mouth and watch the bananas disappear!
3. To “add” more bananas to the spoon, simply put the spoon back in the bowl.
4. When your doll is “thirsty,” give her a pretend sip from her bottle.
5. If your **BABY ALL GONE** doll is still hungry or thirsty, she’ll let you know!

Important cleaning instructions

- Clean doll’s face and body by wiping gently with a soft, damp cloth. **Do not rub.**
- Do not submerge doll in water; it is **not** intended for bath-time play.
- Doll’s clothes are machine-washable (mild detergent, cold water, gentle cycle, no bleach); they can also be spot-cleaned with a cool damp cloth; hang to dry.
- Wipe spoon, bowl and bottle clean with a soft, damp cloth; **do not immerse in water.**

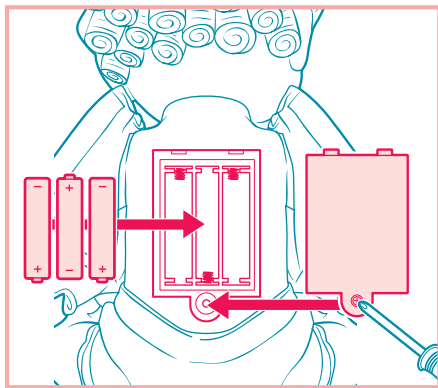


TROUBLESHOOTING

If your BABY ALL GONE doll is unresponsive, or if sounds become erratic, the battery power may be low. Replace batteries.

TO REPLACE BATTERIES

1. Locate battery compartment on doll's back.
2. Loosen screw on battery door.
3. Remove and discard old batteries.
4. Replace with fresh 3 x 1.5V "AAA" or LR03 size alkaline batteries.
5. Replace door and tighten screw.



IMPORTANT: BATTERY INFORMATION

⚠ CAUTION:

1. As with all small batteries, the batteries used with this toy should be kept away from small children who still put things in their mouths. If they are swallowed, promptly see a doctor and have the doctor phone (202) 625-3333 collect. If you reside outside the United States, have the doctor call your local poison control center.
2. Always follow the instructions carefully. Use only batteries specified and be sure to insert them correctly by matching the + and - polarity markings.
3. Do not mix old batteries and new batteries or standard (carbon-zinc) with alkaline batteries.
4. Remove exhausted or dead batteries from the product.
5. Remove batteries if product is not to be played with for a long time.
6. Do not short-circuit the supply terminals.
7. Should this product cause, or be affected by, local electrical interference, move it away from other electrical equipment. Reset (switching off and back on again or removing and re-inserting batteries) if necessary.
8. **RECHARGEABLE BATTERIES:** Do not mix these with any other types of batteries. Always remove from the product before recharging. Recharge batteries under adult supervision. **DO NOT RECHARGE OTHER TYPES OF BATTERIES.**

FCC STATEMENT

This device complies with part 15 of the FCC Rules. Operation is subject to the following two conditions: (1) This device may not cause harmful interference, and (2) this device must accept any interference received, including interference that may cause undesired operation.

This equipment has been tested and found to comply with the limits for a Class B digital device, pursuant to part 15 of the FCC Rules. These limits are designed to provide reasonable protection against harmful interference in a residential installation. This equipment generates, uses and can radiate radio frequency energy, and, if not installed and used in accordance with the instructions, may cause harmful interference to radio communications. However, there is no guarantee that interference will not occur in a particular installation. If this equipment does cause harmful interference to radio or television reception, which can be determined by turning the equipment off and on, the user is encouraged to try to correct the interference by one or more of the following measures:

- Reorient or relocate the receiving antenna.
- Increase the separation between the equipment and receiver.
- Consult the dealer or an experienced radio/TV technician for help.

CAUTION: Changes or modifications to this unit not expressly approved by the party responsible for compliance could void the user's authority to operate the equipment.

Product and colors may vary.

© 2009 Hasbro. All Rights Reserved.
TM & ® denote U.S. Trademarks.
U.S. Pat. No. 5118321.
19316/19313 Asst.
19318/19317 Asst.
PN 7024400000



Questions? Call 1-800-327-8264