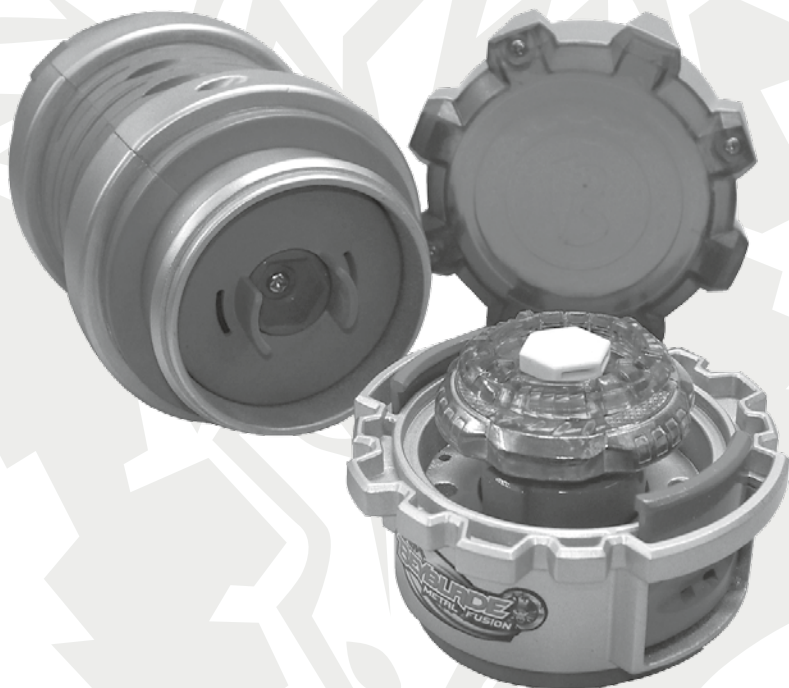


AGES 8+

19699

## ASSEMBLY CHAMBER™\*



Works with all Metal Fusion Tops released in 2010.  
Beyblade Metal Fusion tops sold separately.  
Product shown in fantasy situation.

**⚠ WARNING:**

Do not use Beyblade™ tops or  
Beystadium™ (sold separately) on  
tables or other elevated surfaces.

# TO USE:

1. Remove chamber from assembly core. Place 4 pieces on core as shown. (Top pieces not included.) Snap Face Bolt into chamber.

Snap Face Bolt into chamber.



CHAMBER

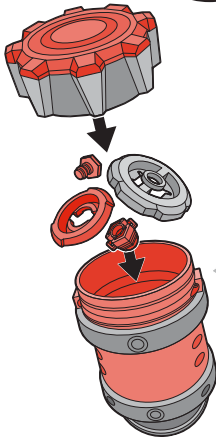
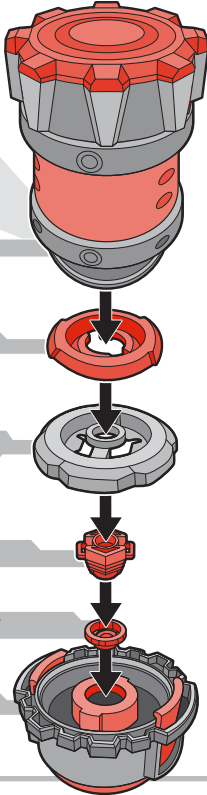
ENERGY RING™\*

FUSION WHEEL™\*

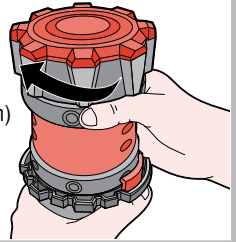
SPIN TRACK™\*

PERFORMANCE TIP™\*

ASSEMBLY CORE

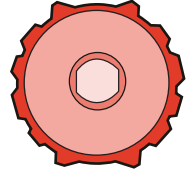


2. Attach chamber to assembly core. Rotate chamber in a clockwise direction (see arrow in illustration) until you hear a clicking sound. This sound means the top is assembled.



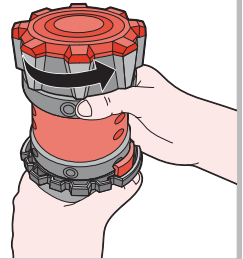
3. Remove chamber from core. Remove top.

The assembly core has a built-in assembly tool if you wish to make manual adjustments to your top.



## Use the chamber to disassemble the top:

Place top on assembly core. Attach chamber in a counterclockwise direction (see arrow in illustration)



When not using the chamber, you can store some tops and/or top pieces inside. (Sold separately)



Product and colors may vary.  
 © Takafumi Adachi, MFBBProject, TV Tokyo  
 Manufactured under license from TOMY Company, Ltd.  
 ®\* and/or TM\* & © 2010 Hasbro. All Rights Reserved.  
 TM & ® denote U.S. Trademarks.

PN 7069520000



Battle online†  
 at [BeyBladeBattles.com!](http://BeyBladeBattles.com!)

†Website available for a limited time only.